

(DANRE) ba2 Antibody (Center)

Purified Rabbit Polyclonal Antibody (Pab)

Catalog # Azb18700c-400 □

Specification

(DANRE) ba2 Antibody (Center) - Product info

Application	WB
Primary Accession	Q90485
Reactivity	Zebrafish
Host	Rabbit
Clonality	Polyclonal
Isotype	Rabbit Ig
Clone Names	RB49940
Calculated MW	16389

(DANRE) ba2 Antibody (Center) - Additional info

Other Names

Hemoglobin subunit beta-2, Beta-2-globin, Beta-A2-globin,
Hemoglobin beta-2 chain, ba2

Target/Specificity

This (DANRE) ba2 antibody is generated from a rabbit immunized with a KLH conjugated synthetic peptide between 71-104 amino acids from the Central region of human (DANRE) ba2.

Dilution

WB~~1:1000

Format

Purified polyclonal antibody supplied in PBS with 0.09% (W/V) sodium azide. This antibody is purified through a protein A column, followed by peptide affinity purification.

Storage

Maintain refrigerated at 2-8°C for up to 2 weeks. For long term storage store at -20°C in small aliquots to prevent freeze-thaw cycles.

Precautions

(DANRE) ba2 Antibody (Center) is for research use only and not for use in diagnostic or therapeutic procedures.

(DANRE) ba2 Antibody (Center) - Protein Information

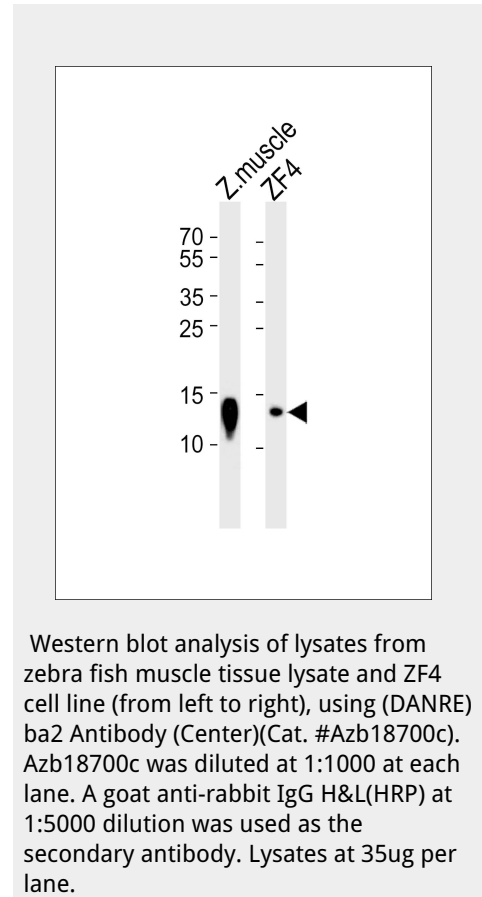
Name ba2

Function

Involved in oxygen transport from gills to the various peripheral tissues.

Tissue Location

Red blood cells..



(DANRE) ba2 Antibody (Center) - Protocols

Provided below are standard protocols that you may find useful for product applications.

- [□Western Blot](#)
- [□Blocking Peptides](#)
- [□Dot Blot](#)
- [□Immunohistochemistry](#)
- [□Immunofluorescence](#)
- [□Immunoprecipitation](#)
- [□Flow Cytometry](#)
- [□Cell Culture](#)

(DANRE) ba2 Antibody (Center) - Background

Involved in oxygen transport from gills to the various peripheral tissues.

(DANRE) ba2 Antibody (Center) - References

Chan F.-Y.,et al.Blood 89:688-700(1997). Howe K.,et al.Nature 496:498-503(2013).