

PSME2 Antibody (C-term)

Purified Rabbit Polyclonal Antibody (Pab)

Catalog # AW5586-200 □

Specification

PSME2 Antibody (C-term) - Product Information

Application	FC, IHC-P, WB
Primary Accession	Q9UL46
Other Accession	Q5E9G3 , P97372 , Q63798
Reactivity	Human, Mouse
Predicted	Human, Dog, Chicken
Host	Rabbit
Clonality	Polyclonal
Calculated MW	H=27;M=27;R=27 KDa
Isotype	Rabbit Ig
Antigen Source	HUMAN

PSME2 Antibody (C-term) - Additional Information

Gene ID 5721

Antigen Region
210-239

Other Names

Proteasome activator complex subunit 2, 11S regulator complex subunit beta, REG-beta, Activator of multicatalytic protease subunit 2, Proteasome activator 28 subunit beta, PA28b, PA28beta, PSME2

Dilution

WB~~1:1000
IHC-P~~1:50~100
FC~~1:10~50

Target/Specificity

This PSME2 antibody is generated from rabbits immunized with a KLH conjugated synthetic peptide between 210-239 amino acids from the C-terminal region of human PSME2.

Storage

Maintain refrigerated at 2-8°C for up to 2 weeks. For long term storage store at -20°C in small aliquots to prevent freeze-thaw cycles.

Precautions

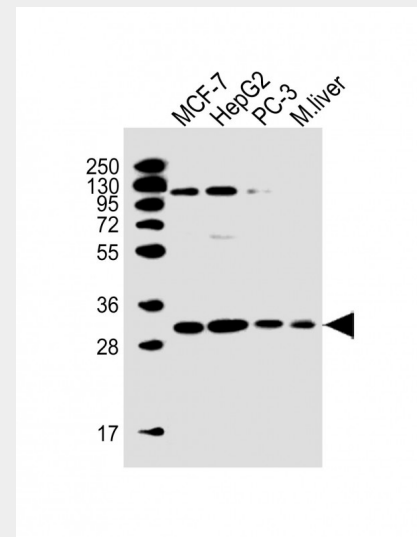
PSME2 Antibody (C-term) is for research use only and not for use in diagnostic or therapeutic procedures.

PSME2 Antibody (C-term) - Protein Information

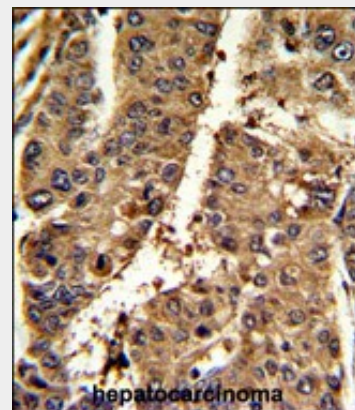
Name PSME2

Function

Implicated in immunoproteasome assembly and required for efficient antigen processing. The PA28 activator complex enhances the generation of class I binding peptides by altering



All lanes : Anti-PSME2 Antibody (C-term) at 1:1000 dilution Lane 1: MCF-7 whole cell lysate Lane 2: HepG2 whole cell lysate Lane 3: PC-3 whole cell lysate Lane 4: mouse liver lysate Lysates/proteins at 20 µg per lane. Secondary Goat Anti-Rabbit IgG, (H+L), Peroxidase conjugated at 1/10000 dilution. Predicted band size : 27 kDa Blocking/Dilution buffer: 5% NFDN/TBST.



Formalin-fixed and paraffin-embedded mouse hepatocarcinoma reacted with PSME2 Antibody (C-term), which was peroxidase-conjugated to the secondary antibody, followed by DAB staining. This data demonstrates the use of this antibody for immunohistochemistry; clinical relevance has not been evaluated.

the cleavage pattern of the proteasome.

PSME2 Antibody (C-term) - Protocols

Provided below are standard protocols that you may find useful for product applications.

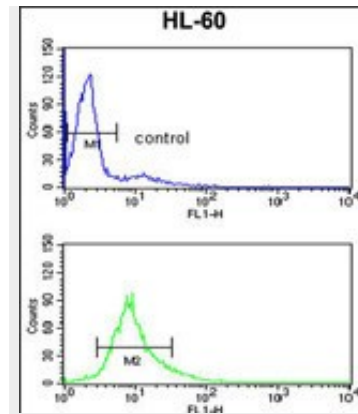
- [□ Western Blot](#)
- [□ Blocking Peptides](#)
- [□ Dot Blot](#)
- [□ Immunohistochemistry](#)
- [□ Immunofluorescence](#)
- [□ Immunoprecipitation](#)
- [□ Flow Cytometry](#)
- [□ Cell Culture](#)

PSME2 Antibody (C-term) - Background

The 26S proteasome is a multicatalytic proteinase complex with a highly ordered structure composed of 2 complexes, a 20S core and a 19S regulator. The 20S core is composed of 4 rings of 28 non-identical subunits; 2 rings are composed of 7 alpha subunits and 2 rings are composed of 7 beta subunits. The 19S regulator is composed of a base, which contains 6 ATPase subunits and 2 non-ATPase subunits, and a lid, which contains up to 10 non-ATPase subunits. Proteasomes are distributed throughout eukaryotic cells at a high concentration and cleave peptides in an ATP/ubiquitin-dependent process in a non-lysosomal pathway. An essential function of a modified proteasome, the immunoproteasome, is the processing of class I MHC peptides. The immunoproteasome contains an alternate regulator, referred to as the 11S regulator or PA28, that replaces the 19S regulator. Three subunits (alpha, beta and gamma) of the 11S regulator have been identified. PSME2 is the beta subunit of the 11S regulator, one of the two 11S subunits that is induced by gamma-interferon.

PSME2 Antibody (C-term) - References

Conticello, S.G., *Curr. Biol.* 13 (22), 2009-2013 (2003)



PSME2 Antibody (C-term) (Cat. #AW5586) flow cytometry analysis of HL-60 cells (bottom histogram) compared to a negative control cell (top histogram). FITC-conjugated goat-anti-rabbit secondary antibodies were used for the analysis.