

P2RX5 Antibody (C-term)

Peptide Affinity Purified Rabbit Polyclonal Antibody (Pab)
 Catalog # AW5538-200 □

Specification

P2RX5 Antibody (C-term) - Product Information

Application	IHC-P, WB
Primary Accession	Q93086
Reactivity	Human
Host	Rabbit
Clonality	Polyclonal
Calculated MW	H=47,48,44 KDa
Isotype	Rabbit Ig
Antigen Source	HUMAN

P2RX5 Antibody (C-term) - Additional Information

Gene ID 5026

Antigen Region
 325-353

Other Names

P2X purinoceptor 5, P2X5, ATP receptor, Purinergic receptor,
 P2RX5, P2X5

Dilution

WB~~1:1000
 IHC-P~~1:10~50

Target/Specificity

This P2RX5 antibody is generated from rabbits immunized with a KLH conjugated synthetic peptide between 325-353 amino acids from the C-terminal region of human P2RX5.

Storage

Maintain refrigerated at 2-8°C for up to 2 weeks. For long term storage store at -20°C in small aliquots to prevent freeze-thaw cycles.

Precautions

P2RX5 Antibody (C-term) is for research use only and not for use in diagnostic or therapeutic procedures.

P2RX5 Antibody (C-term) - Protein Information

Name P2RX5

Synonyms P2X5

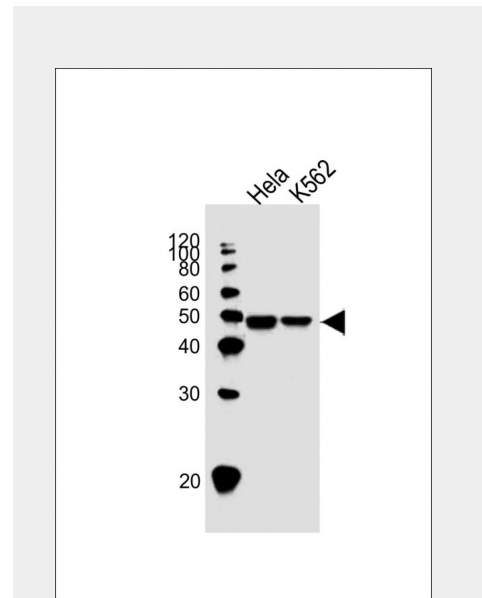
Function

Receptor for ATP that acts as a ligand-gated ion channel.

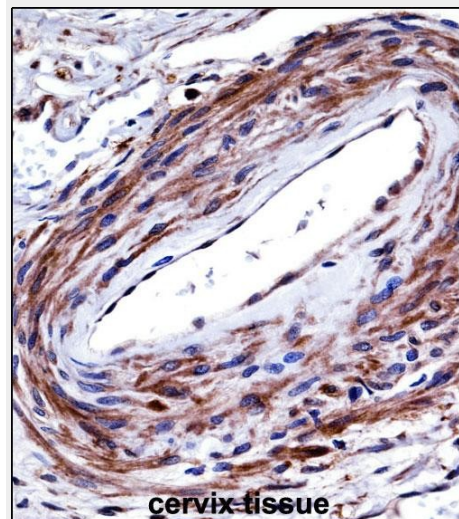
Cellular Location

Membrane; Multi-pass membrane protein.

Tissue Location



All lanes : Anti-P2RX5 Antibody (C-term) at 1:1000 dilution Lane 1: Hela whole cell lysate Lane 2: K562 whole cell lysate Lysates/proteins at 20 µg per lane. Secondary Goat Anti-Rabbit IgG, (H+L), Peroxidase conjugated at 1/10000 dilution. Predicted band size : 47 kDa Blocking/Dilution buffer: 5% NFDm/TBST.



P2RX5 Antibody (C-term) (AW5538) immunohistochemistry analysis in formalin fixed and paraffin embedded human cervix tissue followed by peroxidase conjugation of the secondary antibody and DAB staining. This data demonstrates the use of P2RX5 Antibody (C-term) for immunohistochemistry.

Expressed at high levels in brain and immune system

Clinical relevance has not been evaluated.

P2RX5 Antibody (C-term) - Protocols

Provided below are standard protocols that you may find useful for product applications.

- [□ Western Blot](#)
- [□ Blocking Peptides](#)
- [□ Dot Blot](#)
- [□ Immunohistochemistry](#)
- [□ Immunofluorescence](#)
- [□ Immunoprecipitation](#)
- [□ Flow Cytometry](#)
- [□ Cell Culture](#)

P2RX5 Antibody (C-term) - Background

The product of this gene belongs to the family of purinoceptors for ATP. This receptor functions as a ligand-gated ion channel. Several characteristic motifs of ATP-gated channels are present in its primary structure, but, unlike other members of the purinoceptors family, this receptor has only a single transmembrane domain. Three transcript variants encoding distinct isoforms have been identified for this gene.

P2RX5 Antibody (C-term) - References

Kotnis, S., et al. *Mol. Pharmacol.* 77(6):953-960(2010) Overes, I.M., et al. *Cancer Immunol. Immunother.* 58(3):429-439(2009) Dubyak, G.R. *Mol. Pharmacol.* 72(6):1402-1405(2007) Lamesch, P., et al. *Genomics* 89(3):307-315(2007) Duckwitz, W., et al. *J. Biol. Chem.* 281(51):39561-39572(2006)