

(Mouse) Med15 Antibody (C-term)  
Purified Rabbit Polyclonal Antibody (Pab)  
Catalog # AW5502-400 □

## Specification

### (Mouse) Med15 Antibody (C-term) - Product Information

Application	WB, IHC-P
Primary Accession	<a href="#">Q924H2</a>
Reactivity	Mouse
Host	Rabbit
Clonality	Polyclonal
Calculated MW	M=87;H=87,83,76;R=87 KDa
Isotype	Rabbit Ig
Antigen Source	HUMAN

### (Mouse) Med15 Antibody (C-term) - Additional Information

Gene ID 94112

Antigen Region  
712-746

#### Other Names

Mediator of RNA polymerase II transcription subunit 15,  
Mediator complex subunit 15, Positive cofactor 2  
glutamine/Q-rich-associated protein, PC2  
glutamine/Q-rich-associated protein, mPcqap, Med15, Pcqap

#### Dilution

IHC-P~~1:25  
WB~~1:1000

#### Target/Specificity

This mouse Med15 antibody is generated from a rabbit immunized with a KLH conjugated synthetic peptide between 712-746 amino acids from the C-terminal region of mouse Med15.

#### Storage

Maintain refrigerated at 2-8°C for up to 2 weeks. For long term storage store at -20°C in small aliquots to prevent freeze-thaw cycles.

#### Precautions

(Mouse) Med15 Antibody (C-term) is for research use only and not for use in diagnostic or therapeutic procedures.

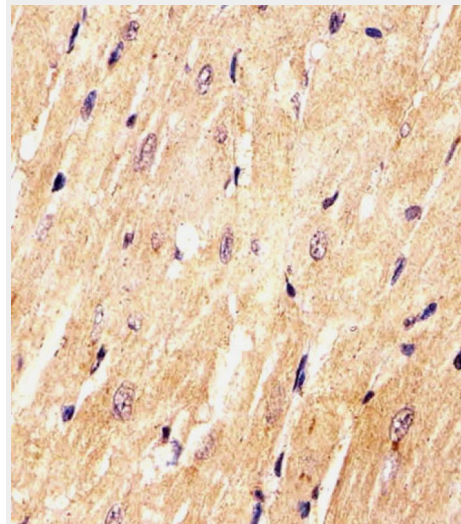
### (Mouse) Med15 Antibody (C-term) - Protein Information

Name Med15

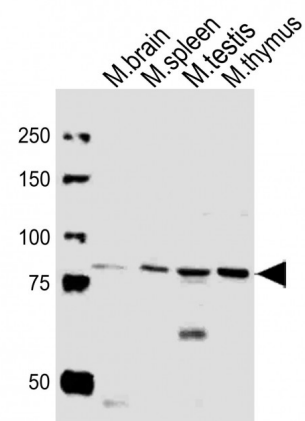
Synonyms Pcqap

#### Function

Component of the Mediator complex, a coactivator involved in the regulated transcription of nearly all RNA polymerase II-dependent genes. Mediator functions as a bridge to convey



AW5502 staining (Mouse) Med15 in Mouse heart tissue sections by Immunohistochemistry (IHC-P - paraformaldehyde-fixed, paraffin-embedded sections). Tissue was fixed with formaldehyde and blocked with 3% BSA for 0.5 hour at room temperature; antigen retrieval was by heat mediation with a citrate buffer (pH6). Samples were incubated with primary antibody (1/25) for 1 hours at 37°C. A undiluted biotinylated goat polyvalent antibody was used as the secondary antibody.



All lanes : Anti-Med15 Antibody (C-term)  
at 1:1000 dilution Lane 1: mouse brain

information from gene-specific regulatory proteins to the basal RNA polymerase II transcription machinery. Mediator is recruited to promoters by direct interactions with regulatory proteins and serves as a scaffold for the assembly of a functional preinitiation complex with RNA polymerase II and the general transcription factors. Required for cholesterol-dependent gene regulation. Positively regulates the Nodal signaling pathway (By similarity).

Cellular Location  
Cytoplasm. Nucleus

lysates Lane 2: mouse spleen lysates  
Lane 3: mouse testis lysates Lane 4:  
mouse thymus lysates Lysates/proteins  
at 20 µg per lane. Secondary Goat  
Anti-Rabbit IgG, (H+L), Peroxidase  
conjugated at 1/10000 dilution Predicted  
band size : 87 kDa Blocking/Dilution  
buffer: 5% NFDm/TBST.

#### (Mouse) Med15 Antibody (C-term) - Protocols

Provided below are standard protocols that you may find useful for product applications.

- [□Western Blot](#)
- [□Blocking Peptides](#)
- [□Dot Blot](#)
- [□Immunohistochemistry](#)
- [□Immunofluorescence](#)
- [□Immunoprecipitation](#)
- [□Flow Cytometry](#)
- [□Cell Culture](#)

#### (Mouse) Med15 Antibody (C-term) - Background

Component of the Mediator complex, a coactivator involved in the regulated transcription of nearly all RNA polymerase II-dependent genes. Mediator functions as a bridge to convey information from gene-specific regulatory proteins to the basal RNA polymerase II transcription machinery. Mediator is recruited to promoters by direct interactions with regulatory proteins and serves as a scaffold for the assembly of a functional preinitiation complex with RNA polymerase II and the general transcription factors. Required for cholesterol-dependent gene regulation. Positively regulates the Nodal signaling pathway (By similarity).

#### (Mouse) Med15 Antibody (C-term) - References

Berti L., et al. Genomics 74:320-332(2001).