

BLVRB Antibody (C-term)
Purified Rabbit Polyclonal Antibody (Pab)
Catalog # AW5035-400 □

Specification

BLVRB Antibody (C-term) - Product Information

Application	WB
Primary Accession	P30043
Other Accession	Q923D2 , P52556
Reactivity	Human, Mouse
Predicted	Bovine
Host	Rabbit
Clonality	polyclonal
Calculated MW	22119 Da
Isotype	Rabbit Ig
Antigen Source	HUMAN

BLVRB Antibody (C-term) - Additional Information

Gene ID 645

Antigen Region
161-175

Other Names
Flavin reductase (NADPH), FR, Biliverdin reductase B, BVR-B, Biliverdin-IX beta-reductase, Green heme-binding protein, GHBP, NADPH-dependent diaphorase, NADPH-flavin reductase, FLR, BLVRB, FLR

Dilution
WB~~1:1000

Target/Specificity
This BLVRB antibody is generated from a rabbit immunized with a KLH conjugated synthetic peptide between 161-175 amino acids from the C-terminal region of human BLVRB.

Format
Purified polyclonal antibody supplied in PBS with 0.09% (W/V) sodium azide. This antibody is purified through a protein A column, followed by peptide affinity purification.

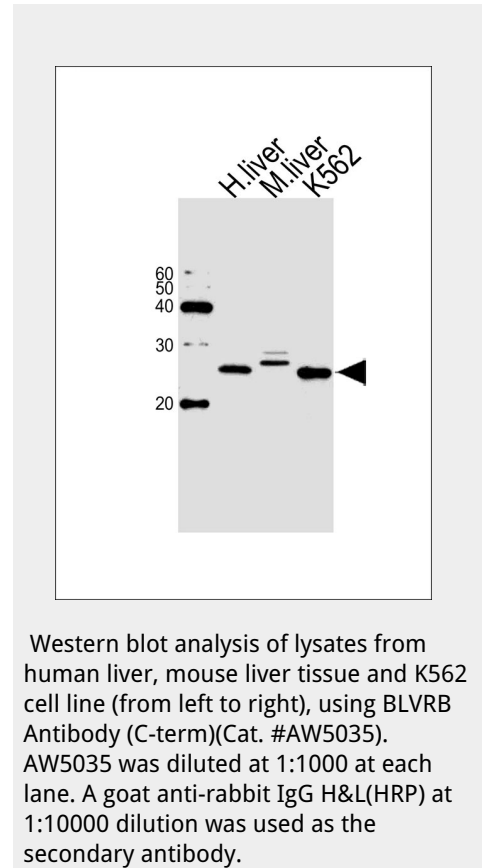
Storage
Maintain refrigerated at 2-8°C for up to 2 weeks. For long term storage store at -20°C in small aliquots to prevent freeze-thaw cycles.

Precautions
BLVRB Antibody (C-term) is for research use only and not for use in diagnostic or therapeutic procedures.

BLVRB Antibody (C-term) - Protein Information

Name BLVRB

Synonyms FLR



Function

Broad specificity oxidoreductase that catalyzes the NADPH-dependent reduction of a variety of flavins, such as riboflavin, FAD or FMN, biliverdins, methemoglobin and PQQ (pyrroloquinoline quinone). Contributes to heme catabolism and metabolizes linear tetrapyrroles. Can also reduce the complexed Fe(3+) iron to Fe(2+) in the presence of FMN and NADPH. In the liver, converts biliverdin to bilirubin.

Cellular Location

Cytoplasm.

Tissue Location

Predominantly expressed in liver and erythrocytes. At lower levels in heart, lung, adrenal gland and cerebrum.

BLVRB Antibody (C-term) - Protocols

Provided below are standard protocols that you may find useful for product applications.

- [Western Blot](#)
- [Blocking Peptides](#)
- [Dot Blot](#)
- [Immunohistochemistry](#)
- [Immunofluorescence](#)
- [Immunoprecipitation](#)
- [Flow Cytometry](#)
- [Cell Culture](#)

BLVRB Antibody (C-term) - Background

Broad specificity oxidoreductase that catalyzes the NADPH-dependent reduction of a variety of flavins, such as riboflavin, FAD or FMN, biliverdins, methemoglobin and PQQ (pyrroloquinoline quinone). Contributes to heme catabolism and metabolizes linear tetrapyrroles. Can also reduce the complexed Fe(3+) iron to Fe(2+) in the presence of FMN and NADPH. In the liver, converts biliverdin to bilirubin.

BLVRB Antibody (C-term) - References

Chikuba K., et al. *Biochem. Biophys. Res. Commun.* 198:1170-1176(1994). Komuro A., et al. *Biol. Pharm. Bull.* 19:796-804(1996). Ota T., et al. *Nat. Genet.* 36:40-45(2004). Grimwood J., et al. *Nature* 428:529-535(2004). Mural R.J., et al. Submitted (JUL-2005) to the EMBL/GenBank/DBJ databases.