

HIST1H1C Antibody (Center)

Peptide Affinity Purified Rabbit Polyclonal Antibody (Pab)
Catalog # AP9164c-400 □

Specification

HIST1H1C Antibody (Center) - Product info

Application	WB
Primary Accession	P16403
Reactivity	Human
Host	Rabbit
Clonality	Polyclonal
Isotype	Rabbit Ig
Clone Names	RB21233
Calculated MW	21365

HIST1H1C Antibody (Center) - Additional info

Gene ID 3006

Other Names

Histone H12, Histone H1c, Histone H1d, Histone H1s-1, HIST1H1C, H1F2

Target/Specificity

This HIST1H1C antibody is generated from rabbits immunized with a KLH conjugated synthetic peptide between 105-131 amino acids from the Central region of human HIST1H1C.

Dilution

WB~~1:2000

Format

Purified polyclonal antibody supplied in PBS with 0.09% (W/V) sodium azide. This antibody is purified through a protein A column, followed by peptide affinity purification.

Storage

Maintain refrigerated at 2-8°C for up to 2 weeks. For long term storage store at -20°C in small aliquots to prevent freeze-thaw cycles.

Precautions

HIST1H1C Antibody (Center) is for research use only and not for use in diagnostic or therapeutic procedures.

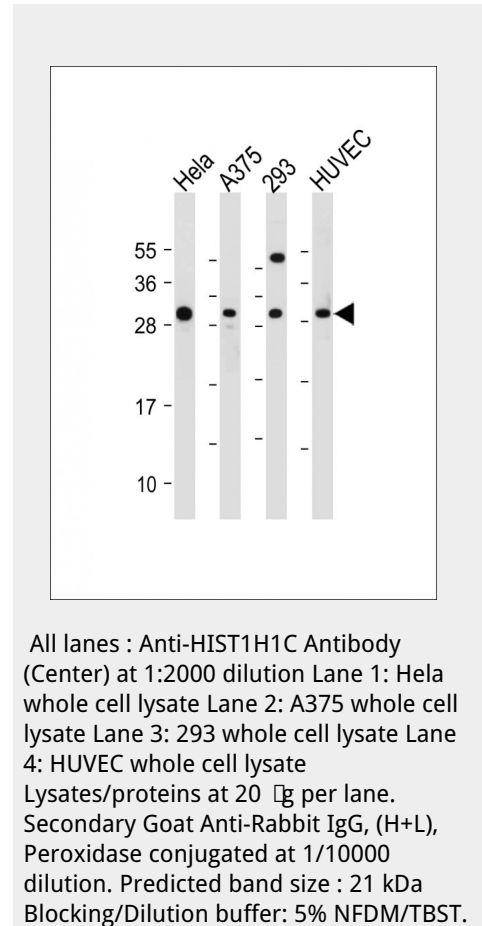
HIST1H1C Antibody (Center) - Protein Information

Name HIST1H1C

Synonyms H1F2

Function

Histone H1 protein binds to linker DNA between nucleosomes forming the macromolecular structure known as the chromatin fiber. Histones H1 are necessary for the condensation of nucleosome chains into higher-order structured fibers. Acts also as a regulator of individual gene transcription through



chromatin remodeling, nucleosome spacing and DNA methylation (By similarity).

Cellular Location

Nucleus. Chromosome. Note=Mainly localizes in euchromatin. Distribution goes in parallel with DNA concentration

HIST1H1C Antibody (Center) - Protocols

Provided below are standard protocols that you may find useful for product applications.

- [□Western Blot](#)
- [□Blocking Peptides](#)
- [□Dot Blot](#)
- [□Immunohistochemistry](#)
- [□Immunofluorescence](#)
- [□Immunoprecipitation](#)
- [□Flow Cytometry](#)
- [□Cell Culture](#)

HIST1H1C Antibody (Center) - Background

Histones H1 are necessary for the condensation of nucleosome chains into higher order structures.

HIST1H1C Antibody (Center) - References

Mayya V., et.al., Sci. Signal. 2:RA46-RA46(2009).