

Anti-CK19 Mouse mAb
Purified Mouse Monoclonal Antibody (Mab)
Catalog # AP53489-100 □

Specification

Anti-CK19 Mouse mAb - Product Information

Application	IHC
Primary Accession	P08727
Reactivity	Human, Mouse, Rat
Host	Mouse
Clonality	Monoclonal Antibody
Isotype	IgG1
Immunogen	Synthetic peptide conjugated to KLH.
Purification	Affinity Purification
Calculated MW	44kDa KDa

Anti-CK19 Mouse mAb - Additional Information

Gene ID 3880

Other Names

Cytokeratin 19, Keratin type I cytoskeletal 19, 40 kDa keratin intermediate filament

Dilution

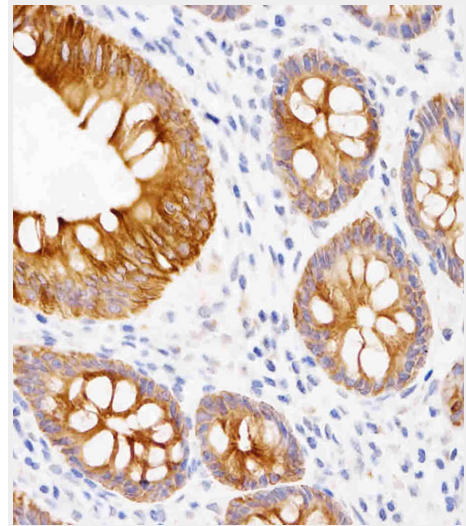
IHC~~1:200

Format

PBS(pH 7.4) containing with 0.02% sodium azide and 50% glycerol.

Storage

Store at +4°C short term. Store at -20°C long term. Avoid freeze / thaw cycle.



Immunohistochemical analysis of KRT19 in Human appendix tissue sections(IHC-P - paraformaldehyde-fixed, paraffin-embedded sections). Tissue was fixed with formaldehyde at room temperature; antigen retrieval was by heat mediation with a EDTA buffer (pH9.0). Samples were incubated with primary antibody (1/200) for 1 hours at room temperature. A undiluted biotinylated CRF Anti-Polyvalent HRP Polymer antibody was used as the secondary antibody.

Anti-CK19 Mouse mAb - Protein Information

Name KRT19

Function

Involved in the organization of myofibers. Together with KRT8, helps to link the contractile apparatus to dystrophin at the costameres of striated muscle.

Tissue Location

Expressed in a defined zone of basal keratinocytes in the deep outer root sheath of hair follicles Also observed in sweat gland and mammary gland ductal and secretory cells, bile ducts, gastrointestinal tract, bladder urothelium, oral epithelia, esophagus, ectocervical epithelium (at protein level). Expressed in epidermal basal cells, in nipple epidermis and a defined region of the hair follicle. Also seen in a subset of vascular wall cells in both the veins and artery of human umbilical cord, and in umbilical cord vascular smooth muscle. Observed in muscle fibers accumulating in the costameres of myoplasm at the sarcolemma in structures that contain dystrophin and spectrin.

Anti-CK19 Mouse mAb - Protocols

Provided below are standard protocols that you may find useful for product applications.

- [□ Western Blot](#)
- [□ Blocking Peptides](#)
- [□ Dot Blot](#)
- [□ Immunohistochemistry](#)
- [□ Immunofluorescence](#)
- [□ Immunoprecipitation](#)
- [□ Flow Cytometry](#)
- [□ Cell Culture](#)

Anti-CK19 Mouse mAb - Background

Involved in the organization of myofibers. Together with KRT8, helps to link the contractile apparatus to dystrophin at the costameres of striated muscle.