

DMGDH Antibody

Purified Rabbit Polyclonal Antibody (Pab)
Catalog # AP53341-100 □

Specification

DMGDH Antibody - Product info

Application	WB
Primary Accession	Q9UI17
Reactivity	Human
Host	Rabbit
Clonality	Polyclonal
Calculated MW	97 KDa

DMGDH Antibody - Additional info

Gene ID 29958

Other Names

Dimethylglycine dehydrogenase, mitochondrial, 1.5.8.4,
ME2GLYDH, DMGDH

Dilution

WB~~ 1:1000

Format

Rabbit IgG in phosphate buffered saline , pH 7.4, 150mM NaCl,
0.02% sodium azide and 50% glycerol

Storage

Store at -20 °C. Stable for 12 months from date of receipt

DMGDH Antibody - Protein Information

Name DMGDH

Function

Catalyzes the demethylation of N,N-dimethylglycine to
sarcosine. Also has activity with sarcosine in vitro.

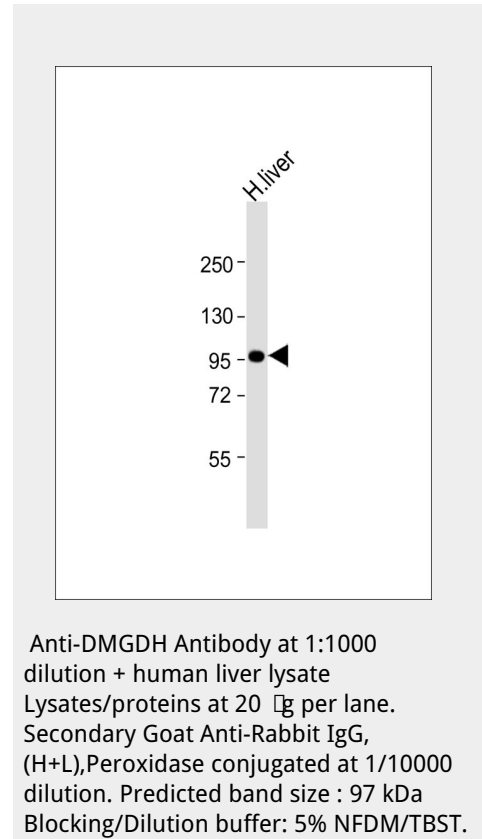
Cellular Location

Mitochondrion.

DMGDH Antibody - Protocols

Provided below are standard protocols that you may find useful for
product applications.

- [Western Blot](#)
- [Blocking Peptides](#)
- [Dot Blot](#)
- [Immunohistochemistry](#)
- [Immunofluorescence](#)
- [Immunoprecipitation](#)
- [Flow Cytometry](#)



[□Cell Culture](#)

DMGDH Antibody - References

Binzak B.A.,et al.Mol. Genet. Metab. 69:181-187(2000). Binzak B.A.,et al.Am. J. Hum. Genet. 68:839-847(2001). Ota T.,et al.Nat. Genet. 36:40-45(2004). Schmutz J.,et al.Nature 431:268-274(2004). Moolenaar S.H.,et al.Clin. Chem. 45:459-464(1999).