

ZNF265 Antibody

Purified Rabbit Polyclonal Antibody (Pab)
Catalog # AP53326-100 □

Specification

ZNF265 Antibody - Product info

Application	WB
Primary Accession	Q95218
Reactivity	Human, Mouse
Host	Rabbit
Clonality	Polyclonal
Calculated MW	37 KDa

ZNF265 Antibody - Additional info

Gene ID 9406

Other Names

Zinc finger Ran-binding domain-containing protein 2, Zinc finger protein 265, Zinc finger, splicing, ZRANB2, ZIS, ZNF265

Dilution

WB~ 1:1000

Format

Rabbit IgG in phosphate buffered saline, pH 7.4, 150mM NaCl, 0.02% sodium azide and 50% glycerol

Storage

Store at -20 °C. Stable for 12 months from date of receipt

ZNF265 Antibody - Protein Information

Name ZRANB2

Synonyms ZIS, ZNF265

Function

Splice factor required for alternative splicing of TRA2B/SFRS10 transcripts. May interfere with constitutive 5'- splice site selection.

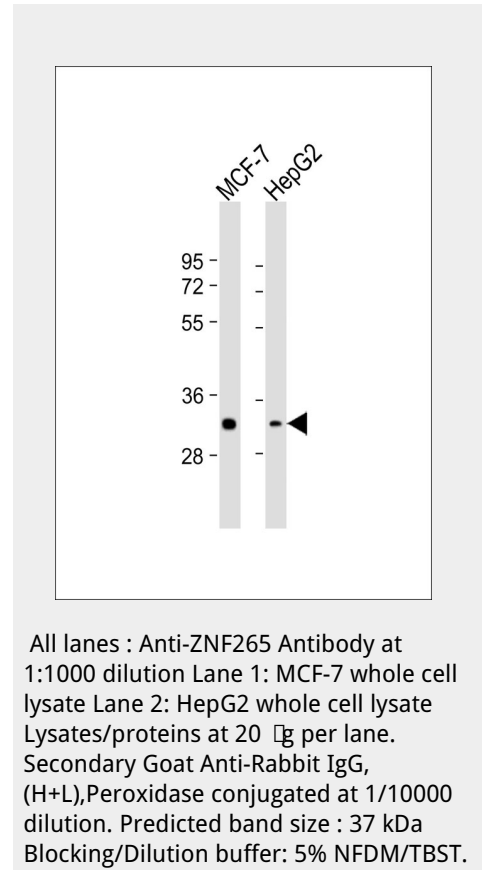
Cellular Location

Nucleus.

ZNF265 Antibody - Protocols

Provided below are standard protocols that you may find useful for product applications.

- [Western Blot](#)
- [Blocking Peptides](#)
- [Dot Blot](#)
- [Immunohistochemistry](#)



- [□Immunofluorescence](#)
- [□Immunoprecipitation](#)
- [□Flow Cytometry](#)
- [□Cell Culture](#)

ZNF265 Antibody - Background

Splice factor required for alternative splicing of TRA2B/SFRS10 transcripts. May interfere with constitutive 5'- splice site selection.

ZNF265 Antibody - References

Nakano M., et al. *Gene* 225:59-65(1998). Wiemann S., et al. *Genome Res.* 11:422-435(2001). Totoki Y., et al. Submitted (MAR-2005) to the EMBL/GenBank/DDBJ databases. Suzuki Y., et al. Submitted (APR-2005) to the EMBL/GenBank/DDBJ databases. Gregory S.G., et al. *Nature* 441:315-321(2006).