

RAB34 Antibody

Purified Rabbit Polyclonal Antibody (Pab)
Catalog # AP53316-100 □

Specification

RAB34 Antibody - Product info

Application	WB
Primary Accession	Q9BZG1
Reactivity	Human
Host	Rabbit
Clonality	Polyclonal
Calculated MW	29 KDa

RAB34 Antibody - Additional info

Gene ID [83871](#)

Other Names

Ras-related protein Rab-34, Ras-related protein Rab-39,
Ras-related protein Rah, RAB34, RAB39, RAH

Dilution

WB~ 1:1000

Format

Rabbit IgG in phosphate buffered saline , pH 7.4, 150mM NaCl,
0.02% sodium azide and 50% glycerol

Storage

Store at -20 °C. Stable for 12 months from date of receipt

RAB34 Antibody - Protein Information

Name RAB34

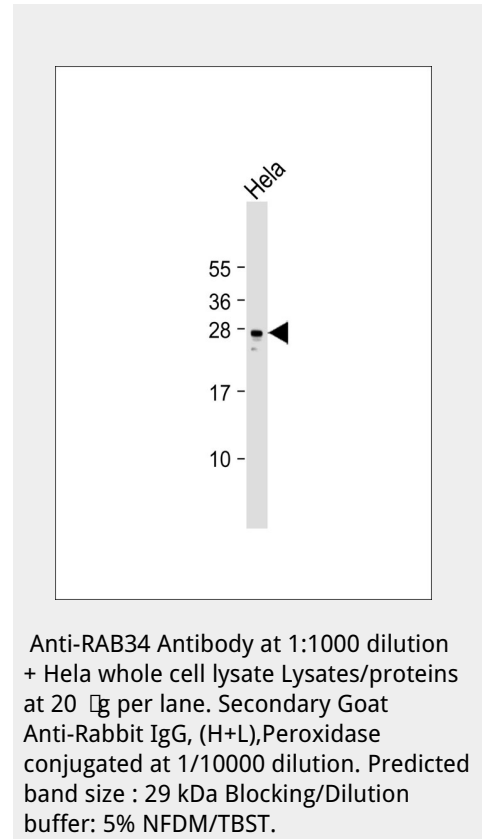
Synonyms RAB39, RAH

Function

Protein transport. Involved in the redistribution of lysosomes to the peri-Golgi region (By similarity). Plays a role in the maturation of phagosomes that engulf pathogens, such as *S.aureus* and *M.tuberculosis* (PubMed:[21255211](http://www.uniprot.org/citations/21255211)). Plays a role in the fusion of phagosomes with lysosomes (PubMed:[21255211](http://www.uniprot.org/citations/21255211)). Acts also as a positive regulator of hedgehog signaling and regulates ciliary function (By similarity).

Cellular Location

Cytoplasm {ECO:0000250|UniProtKB:Q64008}. Golgi apparatus {ECO:0000250|UniProtKB:Q64008}. Cytoplasmic vesicle, phagosome. Cytoplasmic vesicle, phagosome membrane; Lipid-anchor; Cytoplasmic side. Cell projection, cilium {ECO:0000250|UniProtKB:Q64008}. Note=Recruited to phagosomes containing *S.aureus* or *M.tuberculosis*



(PubMed:21255211)

RAB34 Antibody - Protocols

Provided below are standard protocols that you may find useful for product applications.

- [Western Blot](#)
- [Blocking Peptides](#)
- [Dot Blot](#)
- [Immunohistochemistry](#)
- [Immunofluorescence](#)
- [Immunoprecipitation](#)
- [Flow Cytometry](#)
- [Cell Culture](#)

RAB34 Antibody - Background

Protein transport. Involved in the redistribution of lysosomes to the peri-Golgi region (By similarity). Plays a role in the maturation of phagosomes that engulf pathogens, such as *S.aureus* and *M.tuberculosis*. Plays a role in the fusion of phagosomes with lysosomes.

RAB34 Antibody - References

Hong W., et al. Submitted (NOV-2000) to the EMBL/GenBank/DDBJ databases. Stanchi F., et al. Submitted (MAR-2000) to the EMBL/GenBank/DDBJ databases. Kalnine N., et al. Submitted (MAY-2003) to the EMBL/GenBank/DDBJ databases. Ota T., et al. *Nat. Genet.* 36:40-45(2004). Zody M.C., et al. *Nature* 440:1045-1049(2006).