

MRPL41 Antibody

Purified Rabbit Polyclonal Antibody (Pab)
Catalog # AP53306-100 □

Specification

MRPL41 Antibody - Product info

Application	WB
Primary Accession	Q8IXM3
Reactivity	Human
Host	Rabbit
Clonality	Polyclonal
Calculated MW	15 KDa

MRPL41 Antibody - Additional info

Gene ID 64975

Other Names

39S ribosomal protein L41, mitochondrial, L41mt, MRP-L41,
39S ribosomal protein L27 homolog, Bcl-2-interacting
mitochondrial ribosomal protein L41, Cell
proliferation-inducing gene 3 protein, MRP-L27 homolog,
MRPL41, BMRP, MRPL27, RPML27

Dilution

WB~~ 1:1000

Format

Rabbit IgG in phosphate buffered saline , pH 7.4, 150mM NaCl,
0.02% sodium azide and 50% glycerol

Storage

Store at -20 °C.Stable for 12 months from date of receipt

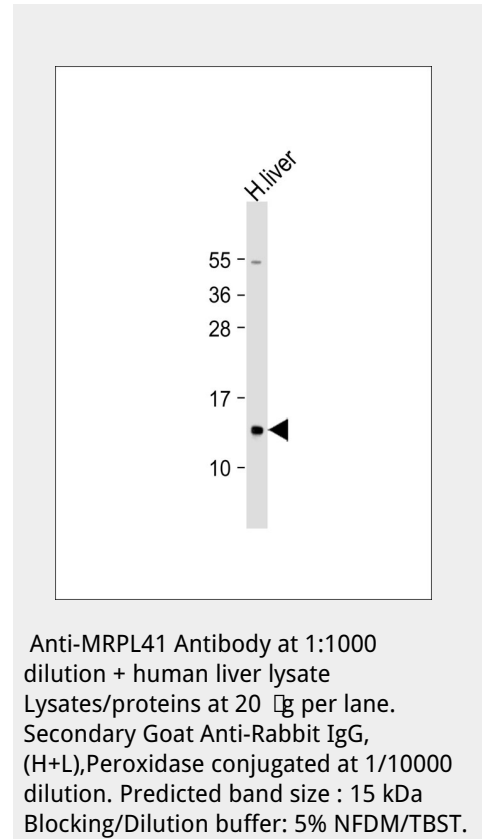
MRPL41 Antibody - Protein Information

Name MRPL41

Synonyms BMRP, MRPL27, RPML27

Function

Component of the mitochondrial ribosome large subunit (PubMed:28892042, PubMed:25838379, PubMed:25278503). Also involved in apoptosis and cell cycle (PubMed:16024796, PubMed:16256947). Enhances p53/TP53 stability, thereby contributing to p53/TP53- induced apoptosis in response to growth-inhibitory condition. Enhances p53/TP53 translocation to the mitochondria. Has the ability to arrest the cell cycle at the G1 phase, possibly by stabilizing the CDKN1A



and CDKN1B (p27Kip1) proteins (PubMed:16024796).

Cellular Location
Mitochondrion

Tissue Location
Present in kidney, liver, thymus and testis, and at lower level in brain and spleen (at protein level)

MRPL41 Antibody - Protocols

Provided below are standard protocols that you may find useful for product applications.

- [Western Blot](#)
- [Blocking Peptides](#)
- [Dot Blot](#)
- [Immunohistochemistry](#)
- [Immunofluorescence](#)
- [Immunoprecipitation](#)
- [Flow Cytometry](#)
- [Cell Culture](#)

MRPL41 Antibody - Background

Component of the mitochondrial ribosome large subunit. Also involved in apoptosis and cell cycle. Enhances p53/TP53 stability, thereby contributing to p53/TP53-induced apoptosis in response to growth-inhibitory condition. Enhances p53/TP53 translocation to the mitochondria. Has the ability to arrest the cell cycle at the G1 phase, possibly by stabilizing the CDKN1A and CDKN1B (p27Kip1) proteins.

MRPL41 Antibody - References

Kim J.W., et al. Submitted (FEB-2003) to the EMBL/GenBank/DDBJ databases. Humphray S.J., et al. Nature 429:369-374(2004). Kenmochi N., et al. Genomics 77:65-70(2001). Koc E.C., et al. J. Biol. Chem. 276:43958-43969(2001). Chintharlapalli S.R., et al. J. Cell. Biochem. 94:611-626(2005).