

## CD3e Antibody

Purified Rabbit Polyclonal Antibody (Pab)  
Catalog # AP53293-100 □

### Specification

#### CD3e Antibody - Product info

Application	WB
Primary Accession	<a href="#">P07766</a>
Reactivity	Human, Mouse
Host	Rabbit
Clonality	Polyclonal
Calculated MW	23 KDa

#### CD3e Antibody - Additional info

Gene ID 916

#### Other Names

T-cell surface glycoprotein CD3 epsilon chain, T-cell surface antigen T3/Leu-4 epsilon chain, CD3e, CD3E, T3E

#### Dilution

WB~ 1:1000

#### Format

Rabbit IgG in phosphate buffered saline , pH 7.4, 150mM NaCl, 0.02% sodium azide and 50% glycerol

#### Storage

Store at -20 °C. Stable for 12 months from date of receipt

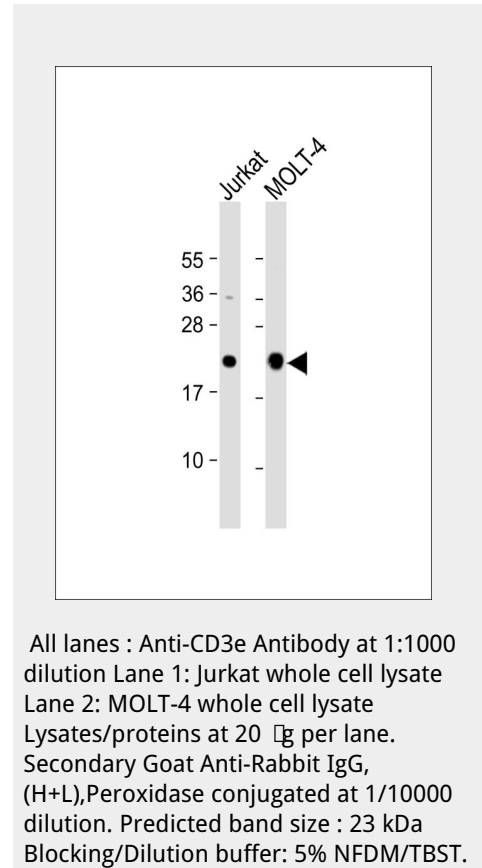
#### CD3e Antibody - Protein Information

Name CD3E

Synonyms T3E

#### Function

Part of the TCR-CD3 complex present on T-lymphocyte cell surface that plays an essential role in adaptive immune response. When antigen presenting cells (APCs) activate T-cell receptor (TCR), TCR-mediated signals are transmitted across the cell membrane by the CD3 chains CD3D, CD3E, CD3G and CD3Z. All CD3 chains contain immunoreceptor tyrosine-based activation motifs (ITAMs) in their cytoplasmic domain. Upon TCR engagement, these motifs become phosphorylated by Src family protein tyrosine kinases LCK and FYN, resulting in the activation of downstream signaling pathways (PubMed:<a href="http://www.uniprot.org/citations/2470098" target="\_blank">2470098</a>). In addition of this role of signal transduction in T-cell activation, CD3E plays an essential role in correct T-cell development. Initiates the TCR-CD3 complex assembly by forming the two heterodimers CD3D/CD3E and CD3G/CD3E. Participates also in internalization and cell surface down-regulation of TCR-CD3 complexes via endocytosis sequences present in CD3E cytosolic region (PubMed:<a href="http://www.uniprot.org/citations/10384095" target="\_blank">10384095</a>)



target="\_blank">10384095</a>, PubMed:<a href="http://www.uniprot.org/citations/26507128" target="\_blank">26507128</a>).

Cellular Location

Cell membrane; Single-pass type I membrane protein

### CD3e Antibody - Protocols

Provided below are standard protocols that you may find useful for product applications.

- [□Western Blot](#)
- [□Blocking Peptides](#)
- [□Dot Blot](#)
- [□Immunohistochemistry](#)
- [□Immunofluorescence](#)
- [□Immunoprecipitation](#)
- [□Flow Cytometry](#)
- [□Cell Culture](#)

### CD3e Antibody - Background

The CD3 complex mediates signal transduction.

### CD3e Antibody - References

Gold D.P., et al. Nature 321:431-434(1986). Terhorst C., et al. Submitted (JAN-1987) to the EMBL/GenBank/DDBJ databases. Clevers H.C., et al. Proc. Natl. Acad. Sci. U.S.A. 85:8156-8160(1988). Ota T., et al. Nat. Genet. 36:40-45(2004). Mural R.J., et al. Submitted (JUL-2005) to the EMBL/GenBank/DDBJ databases.