

Prominin-1 Antibody

Purified Mouse Monoclonal Antibody (Mab)
Catalog # AP52802-100 □

Specification

Prominin-1 Antibody - Product Information

Application	WB
Primary Accession	Q43490
Reactivity	Human
Host	Mouse
Clonality	Monoclonal
Isotype	IgG2b
Calculated MW	133 KDa

Prominin-1 Antibody - Additional Information

Gene ID 8842

Other Names

Prominin-1;Antigen AC133;Prominin-like protein 1;CD133.

Dilution

WB~1:3000

Format

Purified mouse monoclonal antibody in PBS(Ph 7.4) containing with 0.02% sodium azide,0.1mg/mlBSA and 50% glycerol.

Storage

Store at -20 °C.Stable for 12 months from date of receipt

Prominin-1 Antibody - Protein Information

Name PROM1

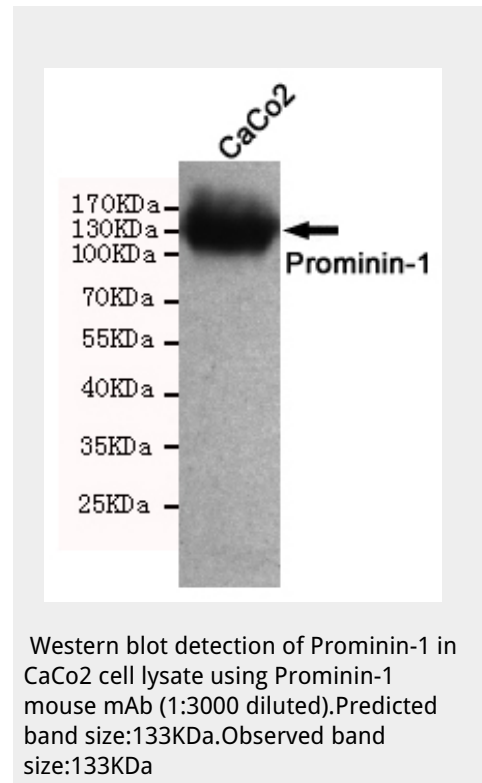
Synonyms PROML1

Function

May play a role in cell differentiation, proliferation and apoptosis (PubMed:24556617). Binds cholesterol in cholesterol- containing plasma membrane microdomains and may play a role in the organization of the apical plasma membrane in epithelial cells. During early retinal development acts as a key regulator of disk morphogenesis. Involved in regulation of MAPK and Akt signaling pathways. In neuroblastoma cells suppresses cell differentiation such as neurite outgrowth in a RET-dependent manner (PubMed:20818439).

Cellular Location

Apical cell membrane; Multi- pass membrane protein. Cell projection, microvillus membrane; Multi-pass membrane protein Cell projection, cilium, photoreceptor outer segment. Endoplasmic reticulum. Endoplasmic reticulum-Golgi



intermediate compartment. Note=Found in extracellular membrane particles in various body fluids such as cerebrospinal fluid, saliva, seminal fluid and urine

Tissue Location

Isoform 1 is selectively expressed on CD34 hematopoietic stem and progenitor cells in adult and fetal bone marrow, fetal liver, cord blood and adult peripheral blood. Isoform 1 is not detected on other blood cells. Isoform 1 is also expressed in a number of non-lymphoid tissues including retina, pancreas, placenta, kidney, liver, lung, brain and heart. Found in saliva within small membrane particles. Isoform 2 is predominantly expressed in fetal liver, skeletal muscle, kidney, and heart as well as adult pancreas, kidney, liver, lung, and placenta. Isoform 2 is highly expressed in fetal liver, low in bone marrow, and barely detectable in peripheral blood. Isoform 2 is expressed on hematopoietic stem cells and in epidermal basal cells (at protein level). Expressed in adult retina by rod and cone photoreceptor cells (at protein level).

Prominin-1 Antibody - Protocols

Provided below are standard protocols that you may find useful for product applications.

- [□Western Blot](#)
- [□Blocking Peptides](#)
- [□Dot Blot](#)
- [□Immunohistochemistry](#)
- [□Immunofluorescence](#)
- [□Immunoprecipitation](#)
- [□Flow Cytometry](#)
- [□Cell Culture](#)

Prominin-1 Antibody - Background

May play a role in cell differentiation, proliferation and apoptosis (PubMed:[24556617](#)). Binds cholesterol in cholesterol-containing plasma membrane microdomains and may play a role in the organization of the apical plasma membrane in epithelial cells. During early retinal development acts as a key regulator of disk morphogenesis. Involved in regulation of MAPK and Akt signaling pathways. In neuroblastoma cells suppresses cell differentiation such as neurite outgrowth in a RET-dependent manner (PubMed:[20818439](#)).

Prominin-1 Antibody - References

Miraglia S.,et al.Blood 90:5013-5021(1997). Yu Y.,et al.J. Biol. Chem. 277:20711-20716(2002). Lin J.,et al.Submitted (OCT-2003) to the EMBL/GenBank/DDBJ databases. Wang X.Y.,et al.Submitted (DEC-1998) to the EMBL/GenBank/DDBJ databases. Ota T.,et al.Nat. Genet. 36:40-45(2004).