

ALDH2 Antibody

Purified Mouse Monoclonal Antibody (Mab)
Catalog # AP52793-100 □

Specification

ALDH2 Antibody - Product Information

Application	WB
Primary Accession	P05091
Reactivity	Human, Mouse
Host	Mouse
Clonality	Monoclonal
Isotype	IgG1
Calculated MW	56 KDa

ALDH2 Antibody - Additional Information

Gene ID 217

Other Names

Acetaldehyde dehydrogenase 2;Aldehyde dehydrogenase 2 family (mitochondrial);Aldehyde dehydrogenase 2 family;Aldehyde dehydrogenase mitochondrial;Aldehyde dehydrogenase, mitochondrial;ALDH 2;ALDH class 2;ALDH E2;ALDH-E2;Aldh2;ALDH2_HUMAN;ALDHI;ALDM;Liver mitochondrial ALDH;MGC1806;Mitochondrial aldehyde dehydrogenase 2;MS767;Nucleus encoded mitochondrial aldehyde dehydrogenase 2.

Dilution

WB~~1:1000

Format

Purified mouse monoclonal in PBS(pH 7.4) containing with 0.02% sodium azide and 50% glycerol.

Storage

Store at -20 °C.Stable for 12 months from date of receipt

ALDH2 Antibody - Protein Information

Name ALDH2

Synonyms ALDM

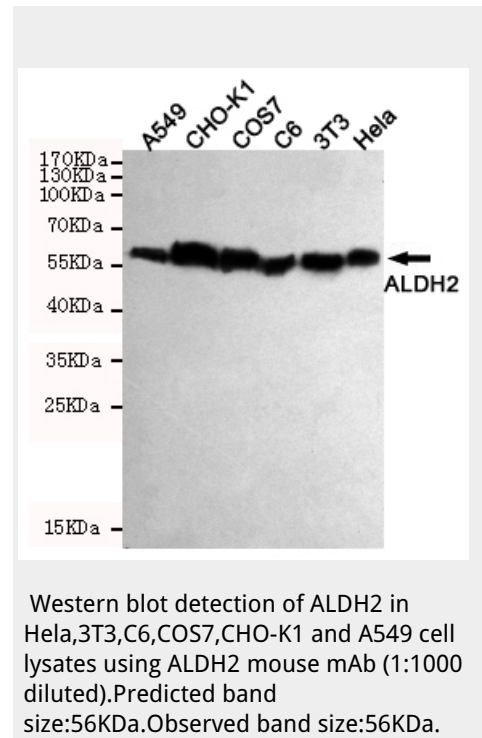
Cellular Location

Mitochondrion matrix.

ALDH2 Antibody - Protocols

Provided below are standard protocols that you may find useful for product applications.

- [Western Blot](#)
- [Blocking Peptides](#)
- [Dot Blot](#)



- [□ Immunohistochemistry](#)
- [□ Immunofluorescence](#)
- [□ Immunoprecipitation](#)
- [□ Flow Cytometry](#)
- [□ Cell Culture](#)

ALDH2 Antibody - References

Braun T., et al. FEBS Lett. 215:233-236(1987). Braun T., et al. FEBS Lett. 233:440-440(1988). Braun T., et al. Nucleic Acids Res. 15:3179-3179(1987). Hsu L.C., et al. Genomics 2:57-65(1988). Lassen N., et al. Submitted (MAY-2004) to the EMBL/GenBank/DDBJ databases.