

beta Tubulin Antibody

Purified Mouse Monoclonal Antibody (Mab)
 Catalog # AP52742-100 □

Specification

beta Tubulin Antibody - Product Information

Application	WB, ICC
Primary Accession	P07437
Reactivity	Human, Mouse, Neisseria Gonorrhoeae
Host	Mouse
Clonality	Monoclonal
Isotype	IgG1
Calculated MW	55 KDa

beta Tubulin Antibody - Additional Information

Gene ID 203068

Other Names

beta 4 tubulin;Beta 5 tubulin;beta Ib
 tubulin;M40;TUBB1;TUBB5;tubulin beta 1 chain; Tubulin beta 4
 chain;tubulin beta 5 chain;Tubulin beta;Tubulin beta
 chain;tubulin beta polypeptide.

Dilution

WB~~1:5000

ICC~~1:500

Format

Purified mouse monoclonal in PBS(pH 7.4) containing with
 0.02% sodium azide,0.1mg/mlBSA and 50% glycerol.

Storage

Store at -20 °C.Stable for 12 months from date of receipt

beta Tubulin Antibody - Protein Information

Name TUBB

Synonyms TUBB5

Function

Tubulin is the major constituent of microtubules. It binds two
 moles of GTP, one at an exchangeable site on the beta chain
 and one at a non-exchangeable site on the alpha chain.

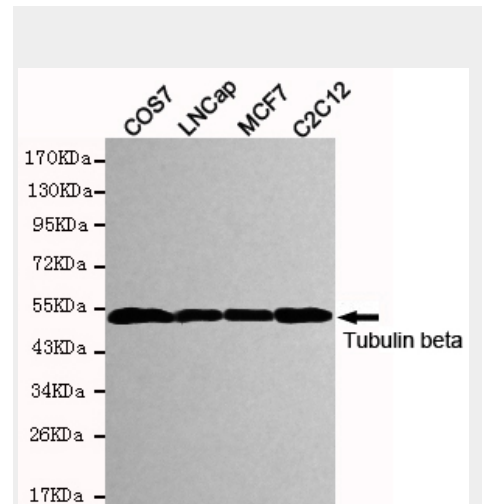
Cellular Location

Cytoplasm, cytoskeleton

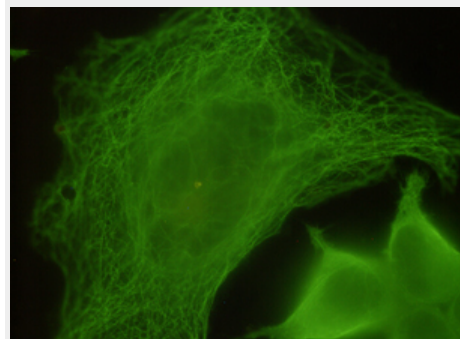
Tissue Location

Ubiquitously expressed with highest levels in spleen, thymus
 and immature brain.

beta Tubulin Antibody - Protocols



Western blot detection of Tubulin beta
 in COS7,LNCap,MCF7 and C2C12 cell
 lysates and using Tubulin beta mouse
 mAb (1:5000 diluted).Predicted band size:
 55KDa.Observed band size: 55KDa.



Immunocytochemistry staining of HeLa
 cells fixed with 4% paraformaldehyde
 and using anti-Tubulin beta mouse mAb
 (dilution 1:500).

Provided below are standard protocols that you may find useful for product applications.

- [□Western Blot](#)
- [□Blocking Peptides](#)
- [□Dot Blot](#)
- [□Immunohistochemistry](#)
- [□Immunofluorescence](#)
- [□Immunoprecipitation](#)
- [□Flow Cytometry](#)
- [□Cell Culture](#)

beta Tubulin Antibody - Background

Tubulin is the major constituent of microtubules. It binds two moles of GTP, one at an exchangeable site on the beta chain and one at a non-exchangeable site on the alpha chain.

beta Tubulin Antibody - References

Lee M.G.-S.,et al.Cell 33:477-487(1983). Hall J.L.,et al.Mol. Cell. Biol. 3:854-862(1983). Crabtree D.V.,et al.Bioorg. Med. Chem. 9:1967-1976(2001). Yu W.,et al.Submitted (JUN-1998) to the EMBL/GenBank/DDBJ databases. Shiina S.,et al.Submitted (SEP-1999) to the EMBL/GenBank/DDBJ databases.