

## TCP1 theta Antibody

Purified Rabbit Polyclonal Antibody (Pab)

Catalog # AP51872-100 □

## Specification

### TCP1 theta Antibody - Product info

|                   |                        |
|-------------------|------------------------|
| Application       | WB                     |
| Primary Accession | <a href="#">P50990</a> |
| Reactivity        | Human, Mouse, Rat      |
| Host              | Rabbit                 |
| Clonality         | Polyclonal             |
| Calculated MW     | 59 KDa                 |

### TCP1 theta Antibody - Additional info

Gene ID 10694

#### Other Names

T-complex protein 1 subunit theta, TCP-1-theta, CCT-theta, Renal carcinoma antigen NY-REN-15, CCT8, C21orf112, CCTQ, KIAA0002

#### Target/Specificity

KLH conjugated synthetic peptide derived from human TCP1 theta

#### Dilution

WB~~ 1:1000

#### Format

0.01M PBS, pH 7.2, 0.1% Sodium azide, Glycerol 50%

#### Storage

Store at -20 °C. Stable for 12 months from date of receipt

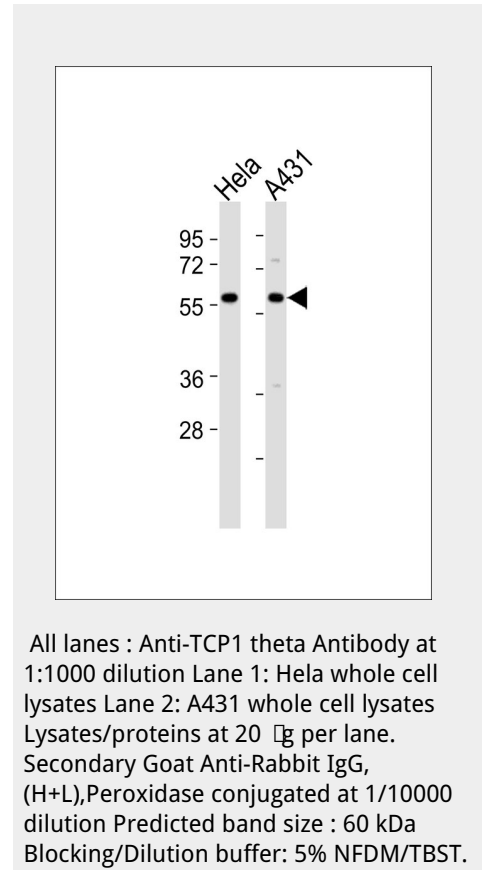
### TCP1 theta Antibody - Protein Information

Name CCT8

Synonyms C21orf112, CCTQ, KIAA0002

#### Function

Component of the chaperonin-containing T-complex (TRiC), a molecular chaperone complex that assists the folding of proteins upon ATP hydrolysis (PubMed:<a href="http://www.uniprot.org/citations/25467444" target="\_blank">25467444</a>). The TRiC complex mediates the folding of WRAP53/TCAB1, thereby regulating telomere maintenance (PubMed:<a href="http://www.uniprot.org/citations/25467444" target="\_blank">25467444</a>). As part of the TRiC complex may play a role in the assembly of BBSome, a complex involved in ciliogenesis regulating transports vesicles to the cilia (PubMed:<a href="http://www.uniprot.org/citations/20080638" target="\_blank">20080638</a>). The TRiC complex plays a role in the folding of actin and tubulin (Probable).



#### Cellular Location

Cytoplasm. Cytoplasm, cytoskeleton, microtubule organizing center, centrosome Cytoplasm, cytoskeleton, cilium basal body {ECO:0000250|UniProtKB:P42932}

#### TCP1 theta Antibody - Protocols

Provided below are standard protocols that you may find useful for product applications.

- [□Western Blot](#)
- [□Blocking Peptides](#)
- [□Dot Blot](#)
- [□Immunohistochemistry](#)
- [□Immunofluorescence](#)
- [□Immunoprecipitation](#)
- [□Flow Cytometry](#)
- [□Cell Culture](#)

#### TCP1 theta Antibody - Background

Molecular chaperone; assists the folding of proteins upon ATP hydrolysis. As part of the BBS/CCT complex may play a role in the assembly of BBSome, a complex involved in ciliogenesis regulating transports vesicles to the cilia. Known to play a role, in vitro, in the folding of actin and tubulin.

#### TCP1 theta Antibody - References

Nomura N.,et al.DNA Res. 1:27-35(1994). Yamazaki M.,et al.DNA Res. 2:187-189(1995). Taudien S.,et al.Submitted (FEB-1999) to the EMBL/GenBank/DDBJ databases. Hattori M.,et al.Nature 405:311-319(2000). Bienvenut W.V.,et al.Submitted (OCT-2004) to UniProtKB.