

RRAS2 Antibody

Purified Rabbit Polyclonal Antibody (Pab)
Catalog # AP51840-100 □

Specification

RRAS2 Antibody - Product info

Application	WB
Primary Accession	P62070
Reactivity	Human, Mouse
Host	Rabbit
Clonality	Polyclonal
Calculated MW	26 KDa

RRAS2 Antibody - Additional info

Gene ID 22800

Other Names

Ras-related protein R-Ras2, Ras-like protein TC21,
Teratocarcinoma oncogene, RRAS2, TC21

Target/Specificity

KLH conjugated synthetic peptide derived from human RRAS2

Dilution

WB~ 1:1000

Format

0.01M PBS, pH 7.2, 0.1% Sodium azide, Glycerol 50%

Storage

Store at -20 °C. Stable for 12 months from date of receipt

RRAS2 Antibody - Protein Information

Name RRAS2

Synonyms TC21

Function

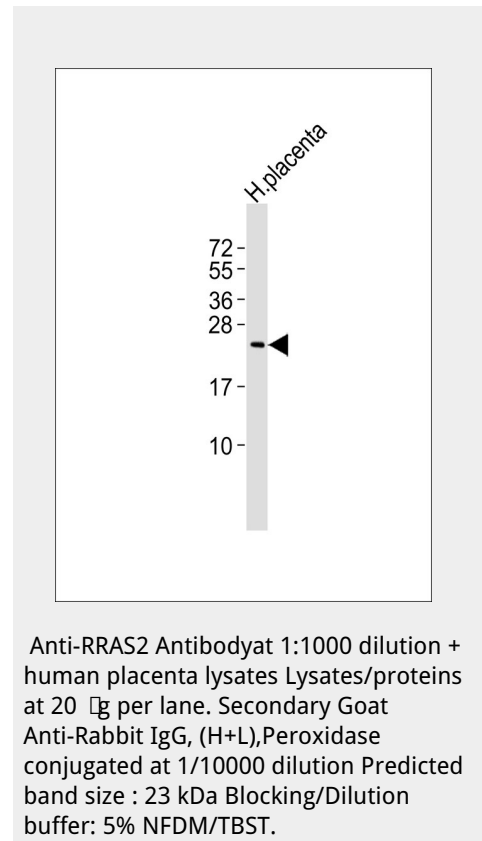
It is a plasma membrane-associated GTP-binding protein with GTPase activity. Might transduce growth inhibitory signals across the cell membrane, exerting its effect through an effector shared with the Ras proteins but in an antagonistic fashion.

Cellular Location

Cell membrane; Lipid-anchor; Cytoplasmic side. Note=Inner surface of plasma membrane possibly with attachment requiring acylation of the C-terminal cysteine (By similarity with RAS)

Tissue Location

Ubiquitously present in all tissues examined, with the highest levels in heart, placenta, and skeletal muscle Moderate levels in lung and liver; low levels in brain, kidney, and pancreas.



RRAS2 Antibody - Protocols

Provided below are standard protocols that you may find useful for product applications.

- [□ Western Blot](#)
- [□ Blocking Peptides](#)
- [□ Dot Blot](#)
- [□ Immunohistochemistry](#)
- [□ Immunofluorescence](#)
- [□ Immunoprecipitation](#)
- [□ Flow Cytometry](#)
- [□ Cell Culture](#)

RRAS2 Antibody - Background

It is a plasma membrane-associated GTP-binding protein with GTPase activity. Might transduce growth inhibitory signals across the cell membrane, exerting its effect through an effector shared with the Ras proteins but in an antagonistic fashion.

RRAS2 Antibody - References

Drivas G.T., et al. Mol. Cell. Biol. 10:1793-1798(1990). Chan A.M.-L., et al. Proc. Natl. Acad. Sci. U.S.A. 91:7558-7562(1994). Puhl H.L. III, et al. Submitted (MAR-2002) to the EMBL/GenBank/DBJ databases. Ota T., et al. Nat. Genet. 36:40-45(2004). Taylor T.D., et al. Nature 440:497-500(2006).