

POLR3F Antibody

Purified Rabbit Polyclonal Antibody (Pab)
Catalog # AP51764-100 □

Specification

POLR3F Antibody - Product info

Application	WB
Primary Accession	Q9H1D9
Reactivity	Human, Mouse, Rat
Host	Rabbit
Clonality	Polyclonal
Calculated MW	39 KDa

POLR3F Antibody - Additional info

Gene ID 10621

Other Names

DNA-directed RNA polymerase III subunit RPC6, RNA polymerase III subunit C6, DNA-directed RNA polymerase III subunit F, RNA polymerase III 39 kDa subunit, RPC39, POLR3F

Target/Specificity

KLH conjugated synthetic peptide derived from human POLR3F

Dilution

WB~~ 1:1000

Format

0.01M PBS, pH 7.2, 0.1% Sodium azide, Glycerol 50%

Storage

Store at -20 °C. Stable for 12 months from date of receipt

POLR3F Antibody - Protein Information

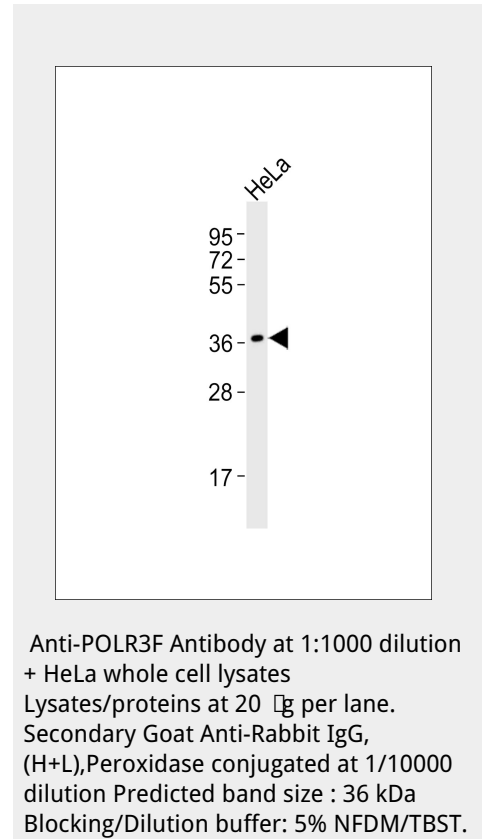
Name POLR3F

Function

DNA-dependent RNA polymerase catalyzes the transcription of DNA into RNA using the four ribonucleoside triphosphates as substrates. Specific peripheric component of RNA polymerase III which synthesizes small RNAs, such as 5S rRNA and tRNAs. May direct RNA Pol III binding to the TFIIB-DNA complex. Plays a key role in sensing and limiting infection by intracellular bacteria and DNA viruses. Acts as nuclear and cytosolic DNA sensor involved in innate immune response. Can sense non-self dsDNA that serves as template for transcription into dsRNA. The non-self RNA polymerase III transcripts, such as Epstein-Barr virus-encoded RNAs (EBERs) induce type I interferon and NF- Kappa-B through the RIG-I pathway. Preferentially binds double-stranded DNA (dsDNA) (PubMed:21358628).

Cellular Location

Nucleus.



POLR3F Antibody - Protocols

Provided below are standard protocols that you may find useful for product applications.

- [□ Western Blot](#)
- [□ Blocking Peptides](#)
- [□ Dot Blot](#)
- [□ Immunohistochemistry](#)
- [□ Immunofluorescence](#)
- [□ Immunoprecipitation](#)
- [□ Flow Cytometry](#)
- [□ Cell Culture](#)

POLR3F Antibody - Background

DNA-dependent RNA polymerase catalyzes the transcription of DNA into RNA using the four ribonucleoside triphosphates as substrates. Specific peripheral component of RNA polymerase III which synthesizes small RNAs, such as 5S rRNA and tRNAs. May direct RNA Pol III binding to the TFIIB-DNA complex. Plays a key role in sensing and limiting infection by intracellular bacteria and DNA viruses. Acts as nuclear and cytosolic DNA sensor involved in innate immune response. Can sense non-self dsDNA that serves as template for transcription into dsRNA. The non-self RNA polymerase III transcripts, such as Epstein-Barr virus-encoded RNAs (EBERs) induce type I interferon and NF- Kappa-B through the RIG-I pathway.

POLR3F Antibody - References

Wang Z., et al. *Genes Dev.* 11:1315-1326(1997). Ota T., et al. *Nat. Genet.* 36:40-45(2004). Deloukas P., et al. *Nature* 414:865-871(2001). Mural R.J., et al. Submitted (SEP-2005) to the EMBL/GenBank/DDBJ databases. Hsieh Y.-J., et al. *Mol. Cell. Biol.* 19:7697-7704(1999).