

Synaptophysin Antibody

Purified Rabbit Polyclonal Antibody (Pab)

Catalog # AP51545-100 □

Specification

Synaptophysin Antibody - Product info

Application	WB
Primary Accession	P08247
Reactivity	Human, Mouse, Rat
Host	Rabbit
Clonality	Polyclonal
Calculated MW	38 KDa

Synaptophysin Antibody - Additional info

Gene ID 6855

Other Names

Synaptophysin, Major synaptic vesicle protein p38, SYP

Target/Specificity

KLH conjugated synthetic peptide derived from human Synaptophysin

Dilution

WB~ 1:1000

Format

0.01M PBS, pH 7.2, 0.1% Sodium azide, Glycerol 50%

Storage

Store at -20 °C. Stable for 12 months from date of receipt

Synaptophysin Antibody - Protein Information

Name SYP

Function

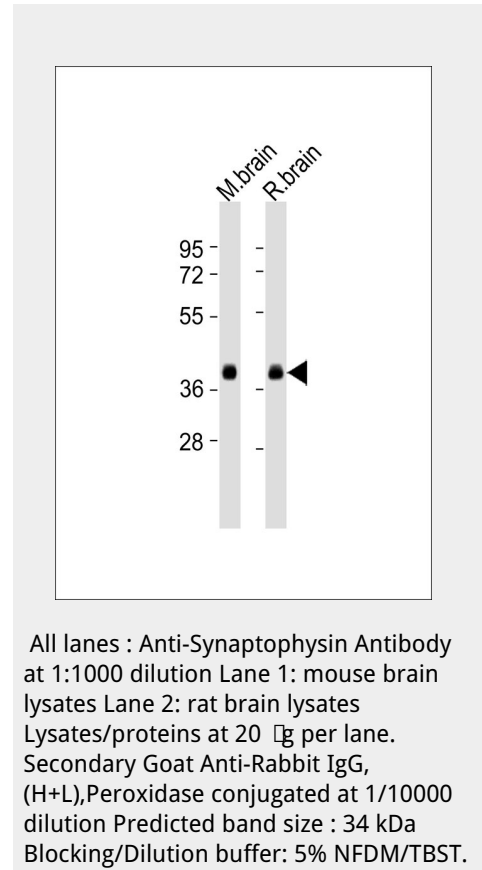
Possibly involved in structural functions as organizing other membrane components or in targeting the vesicles to the plasma membrane. Involved in the regulation of short-term and long-term synaptic plasticity (By similarity).

Cellular Location

Cytoplasmic vesicle, secretory vesicle, synaptic vesicle membrane; Multi-pass membrane protein. Cell junction, synapse, synaptosome

Tissue Location

Expressed in the brain, with expression in the hippocampus, the neuropil in the dentate gyrus, where expression is higher in the outer half of the molecular layer than in the inner half, and in the neuropil of CA4 and CA3



Provided below are standard protocols that you may find useful for product applications.

- [□Western Blot](#)
- [□Blocking Peptides](#)
- [□Dot Blot](#)
- [□Immunohistochemistry](#)
- [□Immunofluorescence](#)
- [□Immunoprecipitation](#)
- [□Flow Cytometry](#)
- [□Cell Culture](#)

Synaptophysin Antibody - Background

Possibly involved in structural functions as organizing other membrane components or in targeting the vesicles to the plasma membrane. Involved in the regulation of short-term and long-term synaptic plasticity (By similarity).

Synaptophysin Antibody - References

Suedhof T.C., et al. *Nucleic Acids Res.* 15:9607-9607(1987). Oezcelik T., et al. *Am. J. Hum. Genet.* 47:551-561(1990). Fisher S.E., et al. *Genomics* 45:340-347(1997). Ota T., et al. *Nat. Genet.* 36:40-45(2004). Mural R.J., et al. Submitted (JUL-2005) to the EMBL/GenBank/DDBJ databases.