

RPL35 Antibody
Purified Rabbit Polyclonal Antibody (Pab)
Catalog # AP51486-100 □

Specification

RPL35 Antibody - Product info

Application	WB
Primary Accession	P42766
Reactivity	Human, Mouse, Rat
Host	Rabbit
Clonality	Polyclonal
Calculated MW	15 KDa

RPL35 Antibody - Additional info

Gene ID 11224

Other Names
60S ribosomal protein L35, RPL35

Target/Specificity
KLH conjugated synthetic peptide derived from human RPL35

Dilution
WB~~ 1:1000

Format
0.01M PBS, pH 7.2, 0.1% Sodium azide, Glycerol 50%

Storage
Store at -20 °C. Stable for 12 months from date of receipt

RPL35 Antibody - Protein Information

Name RPL35

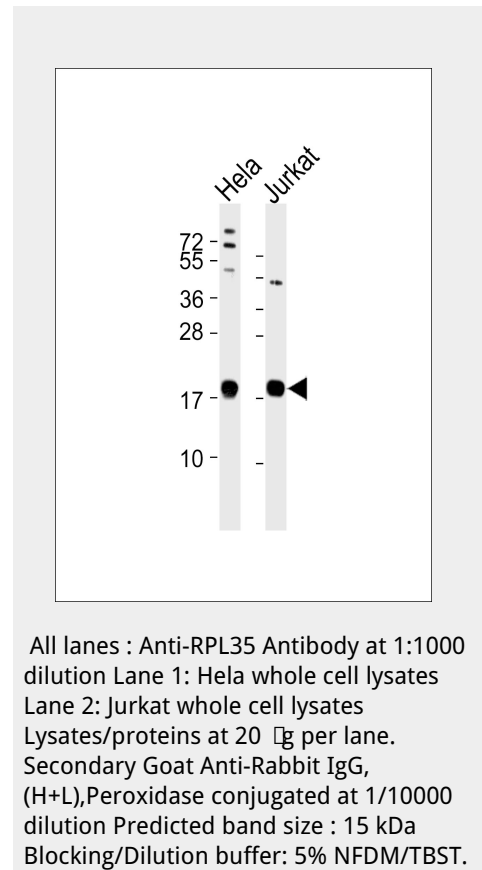
Function
Component of the large ribosomal subunit.

RPL35 Antibody - Protocols

Provided below are standard protocols that you may find useful for product applications.

- [Western Blot](#)
- [Blocking Peptides](#)
- [Dot Blot](#)
- [Immunohistochemistry](#)
- [Immunofluorescence](#)
- [Immunoprecipitation](#)
- [Flow Cytometry](#)
- [Cell Culture](#)

RPL35 Antibody - References



Patel S.K.,et al.Submitted (JUL-1994) to the EMBL/GenBank/DDBJ databases. Ebert L.,et al.Submitted (JUN-2004) to the EMBL/GenBank/DDBJ databases. Ota T.,et al.Nat. Genet. 36:40-45(2004). Humphray S.J.,et al.Nature 429:369-374(2004). Odintsova T.I.,et al.J. Protein Chem. 22:249-258(2003).