

## Cystatin B Antibody

Purified Rabbit Polyclonal Antibody (Pab)

Catalog # AP51123-100 □

### Specification

#### Cystatin B Antibody - Product info

Application	WB
Primary Accession	<a href="#">P04080</a>
Reactivity	Human
Host	Rabbit
Clonality	Polyclonal
Calculated MW	11 KDa

#### Cystatin B Antibody - Additional info

Gene ID 1476

#### Other Names

Cystatin-B, CPI-B, Liver thiol proteinase inhibitor, Stefin-B, CSTB, CST6, STFB

#### Target/Specificity

KLH conjugated synthetic peptide derived from human Cystatin B

#### Dilution

WB~~ 1:1000

#### Format

0.01M PBS, pH 7.2, 0.1% Sodium azide, Glycerol 50%

#### Storage

Store at -20 °C. Stable for 12 months from date of receipt

#### Cystatin B Antibody - Protein Information

Name CSTB

Synonyms CST6, STFB

#### Function

This is an intracellular thiol proteinase inhibitor. Tightly binding reversible inhibitor of cathepsins L, H and B.

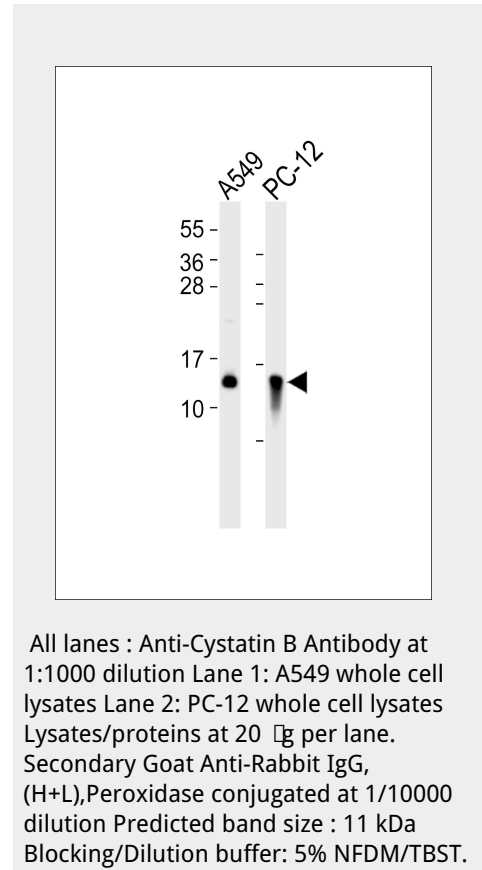
#### Cellular Location

Cytoplasm. Nucleus

### Cystatin B Antibody - Protocols

Provided below are standard protocols that you may find useful for product applications.

- [Western Blot](#)
- [Blocking Peptides](#)
- [Dot Blot](#)



- [□ Immunohistochemistry](#)
- [□ Immunofluorescence](#)
- [□ Immunoprecipitation](#)
- [□ Flow Cytometry](#)
- [□ Cell Culture](#)

#### Cystatin B Antibody - Background

This is an intracellular thiol proteinase inhibitor. Tightly binding reversible inhibitor of cathepsins L, H and B.

#### Cystatin B Antibody - References

Ritonja A., et al. *Biochem. Biophys. Res. Commun.* 131:1187-1192(1985). Pennacchio L.A., et al. *Science* 271:1731-1734(1996). Bhat K.S., et al. Submitted (MAY-1993) to the EMBL/GenBank/DBJ databases. Hattori M., et al. *Nature* 405:311-319(2000). Riccio M., et al. *Exp. Cell Res.* 262:84-94(2001).