

Arylsulfatase A Antibody
Purified Rabbit Polyclonal Antibody (Pab)
Catalog # AP50998-100 □

Specification

Arylsulfatase A Antibody - Product info

Application	WB
Primary Accession	P15289
Reactivity	Human, Mouse, Rat
Host	Rabbit
Clonality	Polyclonal
Calculated MW	54 KDa

Arylsulfatase A Antibody - Additional info

Gene ID 410

Other Names

Arylsulfatase A, ASA, Cerebroside-sulfatase, Arylsulfatase A component B, Arylsulfatase A component C, ARSA

Target/Specificity

KLH conjugated synthetic peptide derived from human Arylsulfatase A

Dilution

WB~~ 1:1000

Format

0.01M PBS, pH 7.2, 0.1% Sodium azide, Glycerol 50%

Storage

Store at -20 °C. Stable for 12 months from date of receipt

Arylsulfatase A Antibody - Protein Information

Name ARSA

Function

Hydrolyzes cerebroside sulfate.

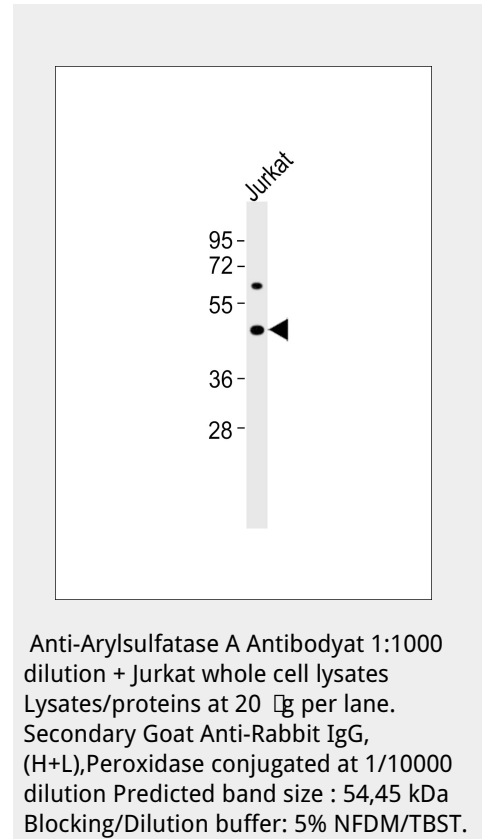
Cellular Location

Endoplasmic reticulum. Lysosome

Arylsulfatase A Antibody - Protocols

Provided below are standard protocols that you may find useful for product applications.

- [Western Blot](#)
- [Blocking Peptides](#)
- [Dot Blot](#)
- [Immunohistochemistry](#)
- [Immunofluorescence](#)



- [□ Immunoprecipitation](#)
- [□ Flow Cytometry](#)
- [□ Cell Culture](#)

Arylsulfatase A Antibody - Background

Hydrolyzes cerebroside sulfate.

Arylsulfatase A Antibody - References

Stein C., et al. *J. Biol. Chem.* 264:1252-1259(1989). Kreysing J., et al. *Eur. J. Biochem.* 191:627-631(1990). Oshikawa M., et al. *Mol. Vis.* 15:482-494(2009). Collins J.E., et al. *Genome Biol.* 5:R84.1-R84.11(2004). Ota T., et al. *Nat. Genet.* 36:40-45(2004).