

**Adenylate Cyclase 5/6 Antibody**  
Purified Rabbit Polyclonal Antibody (Pab)  
Catalog # AP50965-100 □

## Specification

### Adenylate Cyclase 5/6 Antibody - Product info

Application	WB
Primary Accession	<a href="#">Q95622</a>
Reactivity	Human, Mouse, Rat
Host	Rabbit
Clonality	Polyclonal
Calculated MW	139 KDa

### Adenylate Cyclase 5/6 Antibody - Additional info

Gene ID 111

#### Other Names

Adenylate cyclase type 5, ATP pyrophosphate-lyase 5,  
Adenylate cyclase type V, Adenylyl cyclase 5, ADCY5

#### Target/Specificity

KLH conjugated synthetic peptide derived from human  
Adenylate Cyclase 5/6

#### Dilution

WB~~ 1:1000

#### Format

0.01M PBS, pH 7.2, 0.1% Sodium azide, Glycerol 50%

#### Storage

Store at -20 °C. Stable for 12 months from date of receipt

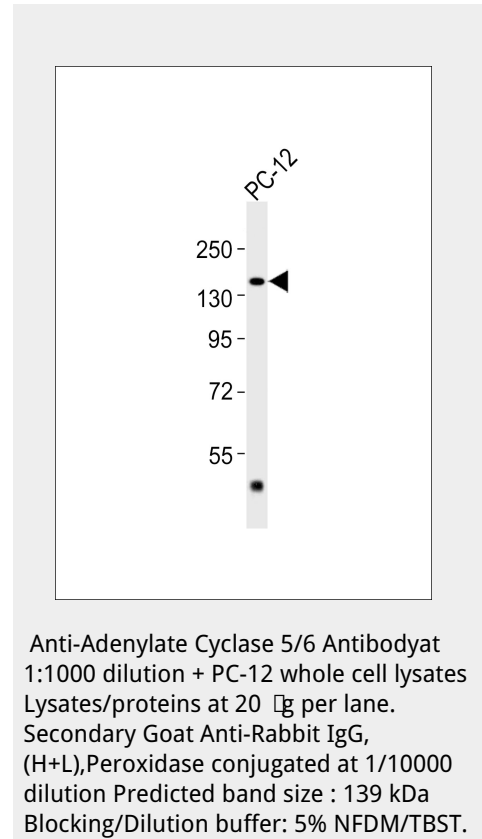
### Adenylate Cyclase 5/6 Antibody - Protein Information

Name ADCY5

#### Function

Catalyzes the formation of the signaling molecule cAMP in response to G-protein signaling (PubMed:<a href="http://www.uniprot.org/citations/15385642" target="\_blank">15385642</a>, PubMed:<a href="http://www.uniprot.org/citations/26206488" target="\_blank">26206488</a>, PubMed:<a href="http://www.uniprot.org/citations/24700542" target="\_blank">24700542</a>). Mediates signaling downstream of ADRB1 (PubMed:<a href="http://www.uniprot.org/citations/24700542" target="\_blank">24700542</a>). Regulates the increase of free cytosolic Ca(2+) in response to increased blood glucose levels and contributes to the regulation of Ca(2+)-dependent insulin secretion (PubMed:<a href="http://www.uniprot.org/citations/24740569" target="\_blank">24740569</a>).

#### Cellular Location



Cell membrane; Multi-pass membrane protein. Cell projection, cilium {ECO:0000250|UniProtKB:P84309}

#### Tissue Location

Detected in pancreas islets (at protein level). Detected in pancreas islets

### Adenylate Cyclase 5/6 Antibody - Protocols

Provided below are standard protocols that you may find useful for product applications.

- [□Western Blot](#)
- [□Blocking Peptides](#)
- [□Dot Blot](#)
- [□Immunohistochemistry](#)
- [□Immunofluorescence](#)
- [□Immunoprecipitation](#)
- [□Flow Cytometry](#)
- [□Cell Culture](#)

### Adenylate Cyclase 5/6 Antibody - Background

This is a membrane-bound, calcium-inhibitable adenylyl cyclase.

### Adenylate Cyclase 5/6 Antibody - References

Ota T., et al. Nat. Genet. 36:40-45(2004). Muzny D.M., et al. Nature 440:1194-1198(2006). Ludwig M.G., et al. J. Recept. Signal Transduct. 22:79-110(2002). Raimundo S., et al. Clin. Chim. Acta 285:155-161(1999). Ding Q., et al. Mol. Pharmacol. 66:921-928(2004).