

## IL37 Antibody

Purified Rabbit Polyclonal Antibody (Pab)  
Catalog # AP50940-100 □

### Specification

#### IL37 Antibody - Product info

Application	WB
Primary Accession	<a href="#">Q9NZH6</a>
Reactivity	Human
Host	Rabbit
Clonality	Polyclonal
Calculated MW	24,22,20,17 KDa

#### IL37 Antibody - Additional info

Gene ID 27178

#### Other Names

Interleukin-37, FIL1 zeta, IL-1X, Interleukin-1 family member 7, IL-1F7, Interleukin-1 homolog 4, IL-1H, IL-1H4, Interleukin-1 zeta, IL-1 zeta, Interleukin-1-related protein, IL-1RP1, Interleukin-23, IL-37, IL37, FIL1Z, IL1F7, IL1H4, IL1RP1

#### Dilution

WB~~ 1:500

#### Format

Rabbit IgG in phosphate buffered saline , pH 7.4, 150mM NaCl, 0.02% sodium azide and 55% glycerol

#### Storage

Store at -20 °C.Stable for 12 months from date of receipt

#### IL37 Antibody - Protein Information

Name IL37

Synonyms FIL1Z, IL1F7, IL1H4, IL1RP1

#### Function

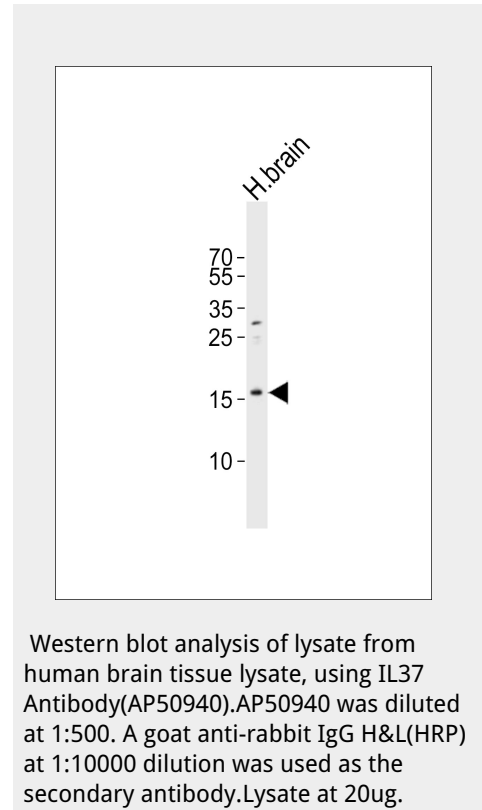
Suppressor of innate inflammatory and immune responses involved in curbing excessive inflammation. This function requires SMAD3. Suppresses, or reduces, proinflammatory cytokine production, including IL1A and IL6, as well as CCL12, CSF1, CSF2, CXCL13, IL1B, IL23A and IL1RN, but spares anti-inflammatory cytokines. Inhibits dendritic cell activation.

#### Cellular Location

Cytoplasm, cytosol Nucleus. Secreted Note=Stimulation with IL1B leads to colocalization with SMAD3 mostly in perinuclear regions (PubMed:20935647). Only the CASP1- cleaved mature form translocates into the nucleus upon LPS stimulation (PubMed:18390730)

#### Tissue Location

In general, low constitutive expression, if any, in healthy tissues; high expression in inflammatory counterparts,



including in synovial tissues from individuals with active rheumatoid arthritis. Isoform A, isoform B and isoform C are expressed in testis, colon, placenta, lung and lymph node. Isoform D and isoform E were found only in testis and bone marrow. Whereas only isoform A is found in brain, only isoform B in kidney and only isoform C in heart.

### IL37 Antibody - Protocols

Provided below are standard protocols that you may find useful for product applications.

- [□Western Blot](#)
- [□Blocking Peptides](#)
- [□Dot Blot](#)
- [□Immunohistochemistry](#)
- [□Immunofluorescence](#)
- [□Immunoprecipitation](#)
- [□Flow Cytometry](#)
- [□Cell Culture](#)

### IL37 Antibody - Background

Suppressor of innate inflammatory and immune responses involved in curbing excessive inflammation. This function requires SMAD3. Suppresses, or reduces, proinflammatory cytokine production, including IL1A and IL6, as well as CCL12, CSF1, CSF2, CXCL13, IL1B, IL23A and IL1RN, but spares anti-inflammatory cytokines. Inhibits dendritic cell activation.

### IL37 Antibody - References

Kumar S., et al. J. Biol. Chem. 275:10308-10314(2000). Manoj P.P., et al. Submitted (JUL-1999) to the EMBL/GenBank/DBJ databases. Pan G., et al. Cytokine 13:1-7(2001). Smith D.E., et al. J. Biol. Chem. 275:1169-1175(2000). Taylor S.L., et al. Genomics 79:726-733(2002).