

NARG1 Antibody

Purified Rabbit Polyclonal Antibody (Pab)
Catalog # AP50688-100 □

Specification

NARG1 Antibody - Product info

Application	WB
Primary Accession	Q9BXJ9
Reactivity	Human, Mouse
Host	Rabbit
Clonality	polyclonal
Calculated MW	101,62 KDa

NARG1 Antibody - Additional info

Gene ID 80155

Other Names

N-alpha-acetyltransferase 15, NatA auxiliary subunit, Gastric cancer antigen Ga19, N-terminal acetyltransferase, NMDA receptor-regulated protein 1, Protein tubedown-1, Tbdn100, NAA15, GA19, NARG1, NATH, TBDN100

Dilution

WB~~ 1:1000

Format

Rabbit IgG in phosphate buffered saline (without Mg²⁺ and Ca²⁺), pH 7.4, 150mM NaCl, 0.02% sodium azide and 50% glycerol.

Storage Conditions

-20°C

NARG1 Antibody - Protein Information

Name NAA15

Synonyms GA19, NARG1, NATH, TBDN100

Function

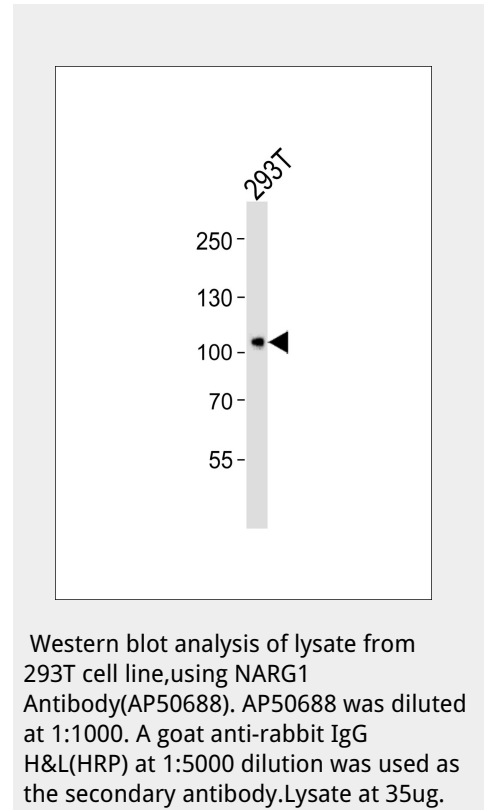
Auxillary subunit of the N-terminal acetyltransferase A (NatA) complex which displays alpha (N-terminal) acetyltransferase activity. The NAT activity may be important for vascular, hematopoietic and neuronal growth and development. Required to control retinal neovascularization in adult ocular endothelial cells. In complex with XRCC6 and XRCC5 (Ku80), up-regulates transcription from the osteocalcin promoter.

Cellular Location

Cytoplasm. Nucleus. Note=Mainly cytoplasmic, nuclear in some cases. Present in the free cytosolic and cytoskeleton-bound polysomes, but not in the membrane-bound polysomes

Tissue Location

Expressed at high levels in testis and in ocular endothelial cells. Also found in brain (corpus callosum), heart, colon, bone



marrow and at lower levels in most adult tissues, including thyroid, liver, pancreas, mammary and salivary glands, lung, ovary, urogenital system and upper gastrointestinal tract. Overexpressed in gastric cancer, in papillary thyroid carcinomas and in a Burkitt lymphoma cell line (Daudi) Specifically suppressed in abnormal proliferating blood vessels in eyes of patients with proliferative diabetic retinopathy

NARG1 Antibody - Protocols

Provided below are standard protocols that you may find useful for product applications.

- [□Western Blot](#)
- [□Blocking Peptides](#)
- [□Dot Blot](#)
- [□Immunohistochemistry](#)
- [□Immunofluorescence](#)
- [□Immunoprecipitation](#)
- [□Flow Cytometry](#)
- [□Cell Culture](#)

NARG1 Antibody - Background

The NAA10-NAA15 complex displays alpha (N-terminal) acetyltransferase activity that may be important for vascular, hematopoietic and neuronal growth and development. Required to control retinal neovascularization in adult ocular endothelial cells. In complex with XRCC6 and XRCC5 (Ku80), up-regulates transcription from the osteocalcin promoter.

NARG1 Antibody - References

Line A., et al. Br. J. Cancer 86:1824-1830(2002). Willis D.M., et al. J. Biol. Chem. 277:37280-37291(2002). Fluge O., et al. Oncogene 21:5056-5068(2002). He Y.G., et al. Sheng Wu Hua Xue Yu Sheng Wu Wu Li Xue Bao 34:353-357(2002). Ota T., et al. Nat. Genet. 36:40-45(2004).