

CLIC3 Antibody

Purified Rabbit Polyclonal Antibody (Pab)
Catalog # AP50638-100 □

Specification

CLIC3 Antibody - Product info

Application	WB
Primary Accession	Q95833
Reactivity	Human
Host	Rabbit
Clonality	polyclonal
Calculated MW	27 KDa

CLIC3 Antibody - Additional info

Gene ID 9022

Other Names
Chloride intracellular channel protein 3, CLIC3

Dilution
WB~1:1000

Format
Rabbit IgG in phosphate buffered saline (without Mg²⁺ and Ca²⁺), pH 7.4, 150mM NaCl, 0.02% sodium azide and 50% glycerol.

Storage Conditions
-20°C

CLIC3 Antibody - Protein Information

Name CLIC3

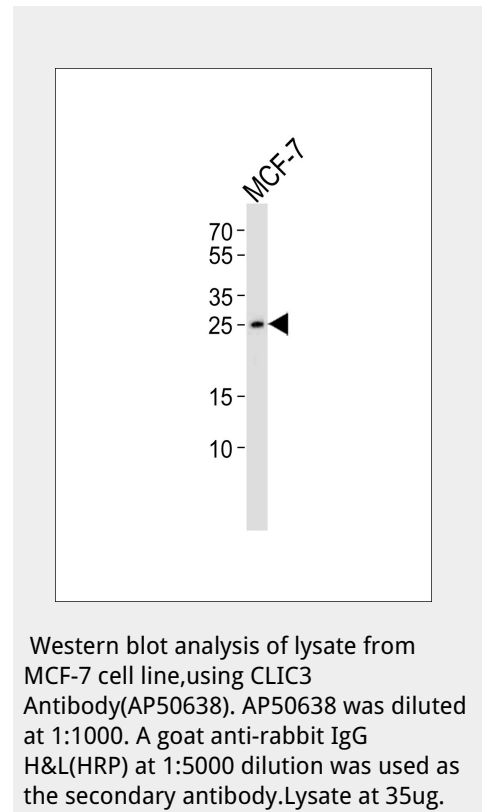
Function
Can insert into membranes and form chloride ion channels.
May participate in cellular growth control.

Cellular Location
Nucleus. Membrane; Single-pass membrane protein.
Cytoplasm. Note=Predominantly nuclear. Some protein was found in the cytoplasm. Exists both as soluble cytoplasmic protein and as membrane protein with probably a single transmembrane domain (By similarity).

Tissue Location
Detected in placenta (at protein level). Widely expressed. High expression is found in placenta followed by lung and heart.
Low expression in skeletal muscle, kidney and pancreas.

CLIC3 Antibody - Protocols

Provided below are standard protocols that you may find useful for product applications.



- [□Western Blot](#)
- [□Blocking Peptides](#)
- [□Dot Blot](#)
- [□Immunohistochemistry](#)
- [□Immunofluorescence](#)
- [□Immunoprecipitation](#)
- [□Flow Cytometry](#)
- [□Cell Culture](#)

CLIC3 Antibody - Background

Can insert into membranes and form chloride ion channels. May participate in cellular growth control.

CLIC3 Antibody - References

Humphray S.J., et al. Nature 429:369-374(2004). Mural R.J., et al. Submitted (JUL-2005) to the EMBL/GenBank/DDBJ databases. Qian Z., et al. J. Biol. Chem. 274:1621-1627(1999). Money T.T., et al. Placenta 28:429-436(2007). Littler D.R., et al. Proteins 78:1594-1600(2010).