

SC24A Antibody (Center)

Peptide Affinity Purified Rabbit Polyclonal Antibody (Pab)
Catalog # AP4701c-400 □

Specification

SC24A Antibody (Center) - Product info

Application	WB, IHC-P
Primary Accession	Q95486
Reactivity	Human
Host	Rabbit
Clonality	Polyclonal
Isotype	Rabbit Ig
Clone Names	RB24813
Calculated MW	119749

SC24A Antibody (Center) - Additional info

Gene ID 10802

Other Names

Protein transport protein Sec24A, SEC24-related protein A, SEC24A

Target/Specificity

This SC24A antibody is generated from rabbits immunized with a KLH conjugated synthetic peptide between 636-663 amino acids from the Central region of human SC24A.

Dilution

WB~~1:1000
IHC-P~~1:50~100

Format

Purified polyclonal antibody supplied in PBS with 0.09% (W/V) sodium azide. This antibody is purified through a protein A column, followed by peptide affinity purification.

Storage

Maintain refrigerated at 2-8°C for up to 2 weeks. For long term storage store at -20°C in small aliquots to prevent freeze-thaw cycles.

Precautions

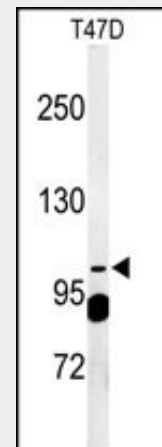
SC24A Antibody (Center) is for research use only and not for use in diagnostic or therapeutic procedures.

SC24A Antibody (Center) - Protein Information

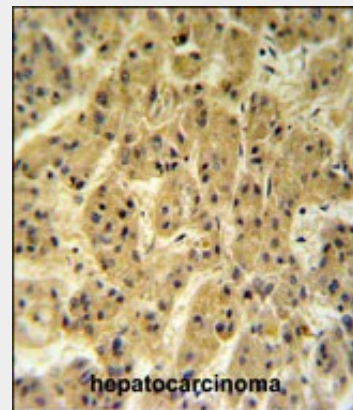
Name SEC24A ([HGNC:10703](#))

Function

Component of the coat protein complex II (COPII) which promotes the formation of transport vesicles from the endoplasmic reticulum (ER). The coat has two main functions, the physical deformation of the endoplasmic reticulum membrane into vesicles and the selection of cargo molecules for their transport to the Golgi complex (PubMed:<a



Western blot analysis of SC24A Antibody (Center) (Cat. #AP4701c) in T47D cell line lysates (35ug/lane). SC24A (arrow) was detected using the purified Pab.



SC24A Antibody (Center) (Cat. #AP4701c) IHC analysis in formalin fixed and paraffin embedded hepatocarcinoma followed by peroxidase conjugation of the secondary antibody and DAB staining. This data demonstrates the use of the SC24A Antibody (Center) for immunohistochemistry. Clinical relevance has not been evaluated.

[20427317](http://www.uniprot.org/citations/20427317), PubMed:<[17499046](http://www.uniprot.org/citations/17499046), PubMed:<[18843296](http://www.uniprot.org/citations/18843296)). Plays a central role in cargo selection within the COPII complex and together with SEC24B may have a different specificity compared to SEC24C and SEC24D. May package preferentially cargos with cytoplasmic DxE or LxxLE motifs and may also recognize conformational epitopes (PubMed:<[17499046](http://www.uniprot.org/citations/17499046), PubMed:<[18843296](http://www.uniprot.org/citations/18843296)).

Cellular Location

Cytoplasmic vesicle, COPII-coated vesicle membrane; Peripheral membrane protein; Cytoplasmic side. Endoplasmic reticulum membrane; Peripheral membrane protein; Cytoplasmic side. Cytoplasm, cytosol

SC24A Antibody (Center) - Protocols

Provided below are standard protocols that you may find useful for product applications.

- [□ Western Blot](#)
- [□ Blocking Peptides](#)
- [□ Dot Blot](#)
- [□ Immunohistochemistry](#)
- [□ Immunofluorescence](#)
- [□ Immunoprecipitation](#)
- [□ Flow Cytometry](#)
- [□ Cell Culture](#)

SC24A Antibody (Center) - Background

SC24A is a component of coat protein II (COPII; see MIM 601924)-coated vesicles that mediate protein transport from the endoplasmic reticulum. SEC24A is 1 of several mammalian proteins that show structural and functional homology to yeast Sec24.

SC24A Antibody (Center) - References

Sugiyama, N., et al. Mol. Cell Proteomics 6(6):1103-1109(2007)
Mancias, J.D., et al. Mol. Cell 26(3):403-414(2007) Wendeler, M.W., et al. EMBO Rep. 8(3):258-264(2007)