

Dcr-1 Antibody (Center)
Purified Rabbit Polyclonal Antibody (Pab)
Catalog # AP1961c-400 □

Specification

Dcr-1 Antibody (Center) - Product info

Application	WB
Primary Accession	P34529
Reactivity	C.Elegans
Host	Rabbit
Clonality	Polyclonal
Isotype	Rabbit Ig
Clone Names	RB9834

Dcr-1 Antibody (Center) - Additional info

Gene ID 176138

Other Names

Endoribonuclease dcr-1, 3126-, dcr-1

Target/Specificity

This Dcr-1 antibody is generated from rabbits immunized with a KLH conjugated synthetic peptide between 1068-1097 amino acids from the Central region of human Dcr-1.

Dilution

WB~1:1000

Format

Purified polyclonal antibody supplied in PBS with 0.09% (W/V) sodium azide. This antibody is prepared by Saturated Ammonium Sulfate (SAS) precipitation followed by dialysis against PBS.

Storage

Maintain refrigerated at 2-8°C for up to 2 weeks. For long term storage store at -20°C in small aliquots to prevent freeze-thaw cycles.

Precautions

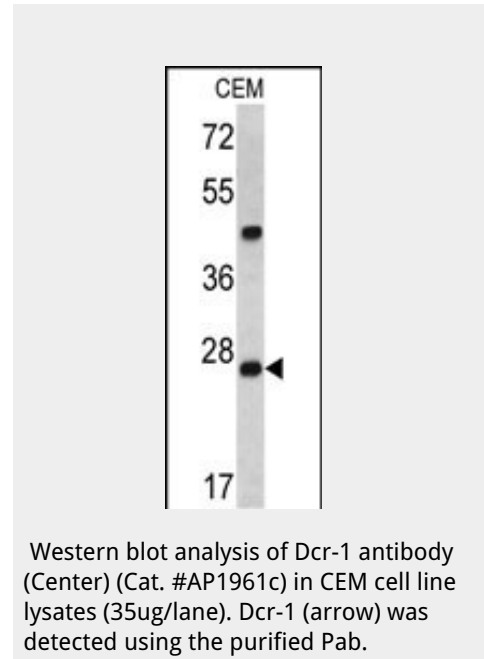
Dcr-1 Antibody (Center) is for research use only and not for use in diagnostic or therapeutic procedures.

Dcr-1 Antibody (Center) - Protein Information

Name dcr-1 {ECO:0000303 | PubMed:11641272}

Function

Involved in cleaving double-stranded RNA in the RNA interference (RNAi) pathway (PubMed:<http://www.uniprot.org/citations/11641272> target="_blank">11641272, PubMed:<http://www.uniprot.org/citations/20223951> target="_blank">20223951). It produces 21 to 23 bp dsRNAs (siRNAs) which target the selective destruction of homologous RNAs (PubMed:<a



href="http://www.uniprot.org/citations/11641272" target="_blank">11641272, PubMed:20223951). Seems to process the precursor of the small temporal RNA let-7 which is involved in developmental timing (PubMed:11641272).

Dcr-1 Antibody (Center) - Protocols

Provided below are standard protocols that you may find useful for product applications.

- [□ Western Blot](#)
- [□ Blocking Peptides](#)
- [□ Dot Blot](#)
- [□ Immunohistochemistry](#)
- [□ Immunofluorescence](#)
- [□ Immunoprecipitation](#)
- [□ Flow Cytometry](#)
- [□ Cell Culture](#)

Dcr-1 Antibody (Center) - Background

The Dcr-1 gene encodes a bidentate ribonuclease that is homologous to E. coli RNase III. Dcr-1 is required both for RNA interference and for synthesis of small developmental RNAs. Dcr-1 interacts in vivo with RDE-4, a double-stranded RNA (dsRNA) binding protein required for RNAi that interacts with trigger dsRNAs and may function to deliver dsRNAs to Dcr-1 for endonucleolytic processing.

Dcr-1 Antibody (Center) - References

Duchaine TF, et al. 2006. Cell 124:343-354. Denli AM, et al. 2004. Nature 432:231-235. Tabara H, et al. 2002. Cell 109:861-871. Grishok A, et al. 2001. Cell 106:23-34. Knight SW, et al. 2001. Science 293:2269-2271.