

## Mouse BAD Antibody (Center S134)

Peptide Affinity Purified Rabbit Polyclonal Antibody (Pab)  
 Catalog # AP19245c-400 □

### Specification

#### Mouse BAD Antibody (Center S134) - Product info

Application	WB
Primary Accession	<a href="#">Q61337</a>
Other Accession	<a href="#">Q35147</a> , <a href="#">NP_031548.1</a>
Reactivity	Mouse
Predicted	Rat
Host	Rabbit
Clonality	Polyclonal
Isotype	Rabbit Ig
Clone Names	RB40310
Calculated MW	22080

#### Mouse BAD Antibody (Center S134) - Additional info

Gene ID 12015

#### Other Names

Bcl2-associated agonist of cell death, BAD, Bcl-2-binding component 6, Bcl-xL/Bcl-2-associated death promoter, Bcl2 antagonist of cell death, Bad, Bbc6

#### Target/Specificity

This Mouse BAD antibody is generated from rabbits immunized with a KLH conjugated synthetic peptide between 112-141 amino acids from the Central region of mouse BAD.

#### Dilution

WB~1:1000

#### Format

Purified polyclonal antibody supplied in PBS with 0.09% (W/V) sodium azide. This antibody is purified through a protein A column, followed by peptide affinity purification.

#### Storage

Maintain refrigerated at 2-8°C for up to 2 weeks. For long term storage store at -20°C in small aliquots to prevent freeze-thaw cycles.

#### Precautions

Mouse BAD Antibody (Center S134) is for research use only and not for use in diagnostic or therapeutic procedures.

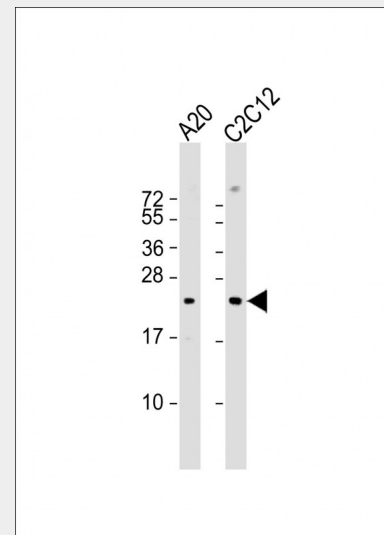
#### Mouse BAD Antibody (Center S134) - Protein Information

Name Bad

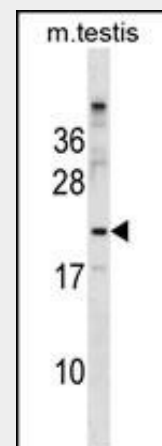
Synonyms Bbc6

#### Function

Promotes cell death. Successfully competes for the binding to Bcl-X(L), Bcl-2 and Bcl-W, thereby affecting the level of



All lanes : Anti-mouse BAD Antibody at 1:1000 dilution Lane 1: A20 whole cell lysate Lane 2: C2C12 whole cell lysate Lysates/proteins at 20 µg per lane. Secondary Goat Anti-Rabbit IgG, (H+L), Peroxidase conjugated at 1/10000 dilution. Predicted band size : 22 kDa Blocking/Dilution buffer: 5% NFDm/TBST.



mouse BAD Antibody (S134) (Cat. #AP19245c) western blot analysis in mouse testis tissue lysates (35ug/lane). This demonstrates the BAD antibody detected the BAD protein (arrow).

heterodimerization of these proteins with BAX. Can reverse the death repressor activity of Bcl-X(L), but not that of Bcl-2. Appears to act as a link between growth factor receptor signaling and the apoptotic pathways.

#### Cellular Location

Mitochondrion outer membrane. Cytoplasm. Note=Colocalizes with HIF3A isoform 2 in the cytoplasm (PubMed:21546903). Upon phosphorylation, locates to the cytoplasm.

#### Mouse BAD Antibody (Center S134) - Protocols

Provided below are standard protocols that you may find useful for product applications.

- [□Western Blot](#)
- [□Blocking Peptides](#)
- [□Dot Blot](#)
- [□Immunohistochemistry](#)
- [□Immunofluorescence](#)
- [□Immunoprecipitation](#)
- [□Flow Cytometry](#)
- [□Cell Culture](#)

#### Mouse BAD Antibody (Center S134) - Background

BAD promotes cell death. Successfully competes for the binding to Bcl-X(L), Bcl-2 and Bcl-W, thereby affecting the level of heterodimerization of these proteins with BAX. Can reverse the death repressor activity of Bcl-X(L), but not that of Bcl-2. Appears to act as a link between growth factor receptor signaling and the apoptotic pathways.

#### Mouse BAD Antibody (Center S134) - References

Santidrian, A.F., et al. Blood 116(16):3023-3032(2010) Frenzel, A., et al. Blood 115(5):995-1005(2010) Quoyer, J., et al. J. Biol. Chem. 285(3):1989-2002(2010) Polzien, L., et al. J. Biol. Chem. 284(41):28004-28020(2009) Wu, X., et al. Diabetologia 52(10):2130-2141(2009)