

## PLD2 Antibody (N-term)

Peptide Affinity Purified Rabbit Polyclonal Antibody (Pab)  
Catalog # AP14669a-400 □

### Specification

#### PLD2 Antibody (N-term) - Product info

Application	WB
Primary Accession	<a href="#">Q14939</a>
Other Accession	<a href="#">Q0V8L6</a> , <a href="#">NP_002654.3</a>
Reactivity	Human, Mouse
Predicted	Bovine
Host	Rabbit
Clonality	Polyclonal
Isotype	Rabbit Ig
Clone Names	RB34393

#### PLD2 Antibody (N-term) - Additional info

Gene ID 5338

#### Other Names

Phospholipase D2, PLD 2, hPLD2, Choline phosphatase 2, PLD1C, Phosphatidylcholine-hydrolyzing phospholipase D2, PLD2

#### Target/Specificity

This PLD2 antibody is generated from rabbits immunized with a KLH conjugated synthetic peptide between 10-39 amino acids from the N-terminal region of human PLD2.

#### Dilution

WB~1:1000

#### Format

Purified polyclonal antibody supplied in PBS with 0.09% (W/V) sodium azide. This antibody is purified through a protein A column, followed by peptide affinity purification.

#### Storage

Maintain refrigerated at 2-8°C for up to 2 weeks. For long term storage store at -20°C in small aliquots to prevent freeze-thaw cycles.

#### Precautions

PLD2 Antibody (N-term) is for research use only and not for use in diagnostic or therapeutic procedures.

#### PLD2 Antibody (N-term) - Protein Information

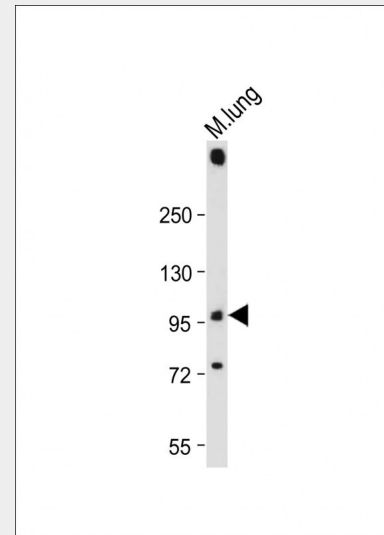
Name PLD2

#### Function

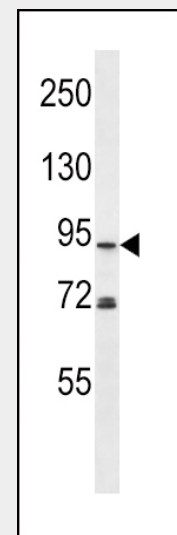
May have a role in signal-induced cytoskeletal regulation and/or endocytosis.

#### Cellular Location

Membrane; Peripheral membrane protein



Anti-PLD2 Antibody (N-term) at 1:2000 dilution + Mouse lung tissue lysate Lysates/proteins at 20 µg per lane. Secondary Goat Anti-Rabbit IgG, (H+L), Peroxidase conjugated at 1/10000 dilution. Predicted band size : 106 kDa Blocking/Dilution buffer: 5% NFDm/TBST.



PLD2 Antibody (N-term) (Cat. #AP14669a) western blot analysis in MDA-MB453 cell line lysates (35µg/lane). This demonstrates the PLD2 antibody detected the PLD2 protein (arrow).

Tissue Location  
Ubiquitous.

#### PLD2 Antibody (N-term) - Protocols

Provided below are standard protocols that you may find useful for product applications.

- [□Western Blot](#)
- [□Blocking Peptides](#)
- [□Dot Blot](#)
- [□Immunohistochemistry](#)
- [□Immunofluorescence](#)
- [□Immunoprecipitation](#)
- [□Flow Cytometry](#)
- [□Cell Culture](#)

#### PLD2 Antibody (N-term) - Background

Phosphatidylcholine (PC)-specific phospholipases D (PLDs; EC 3.1.4.4) catalyze the hydrolysis of PC to produce phosphatidic acid and choline. Activation of PC-specific PLDs occurs as a consequence of agonist stimulation of both tyrosine kinase and G protein-coupled receptors. PC-specific PLDs have been proposed to function in regulated secretion, cytoskeletal reorganization, transcriptional regulation, and cell cycle control.[supplied by OMIM].

#### PLD2 Antibody (N-term) - References

Chae, Y.C., et al. Mol. Cell. Biol. 30(21):5086-5098(2010) Bailey, S.D., et al. Diabetes Care 33(10):2250-2253(2010) Knapek, K., et al. Mol. Cell. Biol. 30(18):4492-4506(2010) Tabatabaian, F., et al. J. Biol. Chem. 285(25):18991-19001(2010) Kang, D.W., et al. PLoS ONE 5 (8), E12109 (2010) :

#### PLD2 Antibody (N-term) - Citations

- [Oxidized LDL phagocytosis during foam cell formation in atherosclerotic plaques relies on a PLD2-CD36 functional interdependence.](#)
- [AQP3 small interfering RNA and PLD2 small interfering RNA inhibit the proliferation and promote the apoptosis of squamous cell carcinoma.](#)