

## Rax Antibody (N-term)

Peptide Affinity Purified Rabbit Polyclonal Antibody (Pab)  
Catalog # AP1428a-400 □

### Specification

#### Rax Antibody (N-term) - Product info

Application	WB, IHC-P
Primary Accession	<a href="#">Q9Y2V3</a>
Other Accession	<a href="#">Q9PVX0</a>
Reactivity	Human, Mouse
Predicted	Chicken
Host	Rabbit
Clonality	Polyclonal
Isotype	Rabbit Ig
Clone Names	RB10426

#### Rax Antibody (N-term) - Additional info

Gene ID 30062

#### Other Names

Retinal homeobox protein Rx, Retina and anterior neural fold homeobox protein, RAX, RX

#### Target/Specificity

This Rax antibody is generated from rabbits immunized with a KLH conjugated synthetic peptide between 15-46 amino acids from the N-terminal region of human Rax.

#### Dilution

WB~~1:1000  
IHC-P~~1:10~50

#### Format

Purified polyclonal antibody supplied in PBS with 0.09% (W/V) sodium azide. This antibody is prepared by Saturated Ammonium Sulfate (SAS) precipitation followed by dialysis against PBS.

#### Storage

Maintain refrigerated at 2-8°C for up to 2 weeks. For long term storage store at -20°C in small aliquots to prevent freeze-thaw cycles.

#### Precautions

Rax Antibody (N-term) is for research use only and not for use in diagnostic or therapeutic procedures.

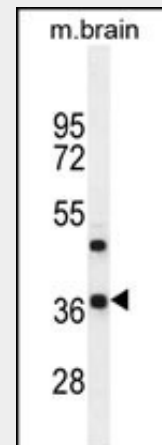
#### Rax Antibody (N-term) - Protein Information

Name RAX

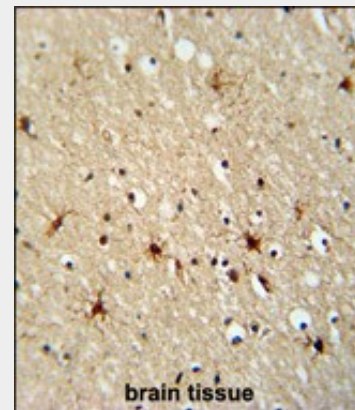
Synonyms RX

#### Function

Plays a critical role in eye formation by regulating the initial specification of retinal cells and/or their subsequent



Western blot analysis of anti-Rax Pab (Cat.#AP1428a) in mouse brain tissue lysates (35ug/lane). Rax(arrow) was detected using the purified Pab.



Formalin-fixed and paraffin-embedded human brain tissue reacted with Rax Antibody (N-term) (Cat.#AP1428a), which was peroxidase-conjugated to the secondary antibody, followed by DAB staining. This data demonstrates the use of this antibody for immunohistochemistry; clinical relevance has not been evaluated.

proliferation. Binds to the photoreceptor conserved element-I (PCE-1/Ret 1) in the photoreceptor cell-specific arrestin promoter.

Cellular Location  
Nucleus.

Tissue Location  
Expressed in the developing eye and weakly expressed in the adult retina

#### Rax Antibody (N-term) - Protocols

Provided below are standard protocols that you may find useful for product applications.

- [Western Blot](#)
- [Blocking Peptides](#)
- [Dot Blot](#)
- [Immunohistochemistry](#)
- [Immunofluorescence](#)
- [Immunoprecipitation](#)
- [Flow Cytometry](#)
- [Cell Culture](#)

#### Rax Antibody (N-term) - Background

Rax plays a critical role in eye formation by regulating the initial specification of retinal cells and/or their subsequent proliferation. It binds to the photoreceptor conserved element-I (PCE-1/Ret 1) in the photoreceptor cell-specific arrestin promoter.

#### Rax Antibody (N-term) - References

Voronina,V.A., Hum. Mol. Genet. 13 (3), 315-322 (2004) Mikkola,I., J. Biol. Chem. 276 (6), 4109-4118 (2001) Mathers,P.H., Cell. Mol. Life Sci. 57 (2), 186-194 (2000)