

## MMP3 Antibody (N-term)

Peptide Affinity Purified Rabbit Polyclonal Antibody (Pab)  
 Catalog # AP13536a-400 □

### Specification

#### MMP3 Antibody (N-term) - Product info

Application	IHC-P, IF, WB
Primary Accession	<a href="#">P08254</a>
Other Accession	<a href="#">NP_002413.1</a>
Reactivity	Human
Host	Rabbit
Clonality	Polyclonal
Isotype	Rabbit Ig
Clone Names	RB33616
Calculated MW	53977

#### MMP3 Antibody (N-term) - Additional info

Gene ID 4314

#### Other Names

Stromelysin-1, SL-1, Matrix metalloproteinase-3, MMP-3,  
 Transin-1, MMP3, STMY1

#### Target/Specificity

This MMP3 antibody is generated from rabbits immunized with a KLH conjugated synthetic peptide between 30-59 amino acids from the N-terminal region of human MMP3.

#### Dilution

WB~~1:1000  
 IHC-P~~1:10~50  
 IF~~1:10~50

#### Format

Purified polyclonal antibody supplied in PBS with 0.09% (W/V) sodium azide. This antibody is purified through a protein A column, followed by peptide affinity purification.

#### Storage

Maintain refrigerated at 2-8°C for up to 2 weeks. For long term storage store at -20°C in small aliquots to prevent freeze-thaw cycles.

#### Precautions

MMP3 Antibody (N-term) is for research use only and not for use in diagnostic or therapeutic procedures.

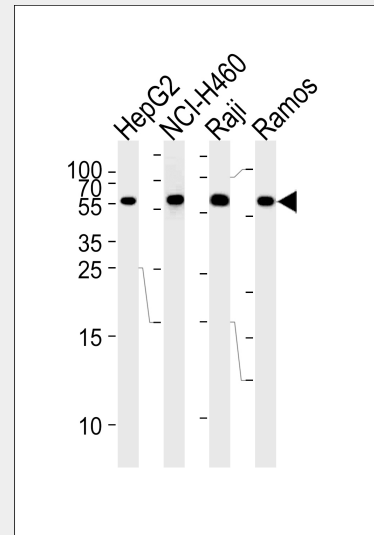
#### MMP3 Antibody (N-term) - Protein Information

Name MMP3

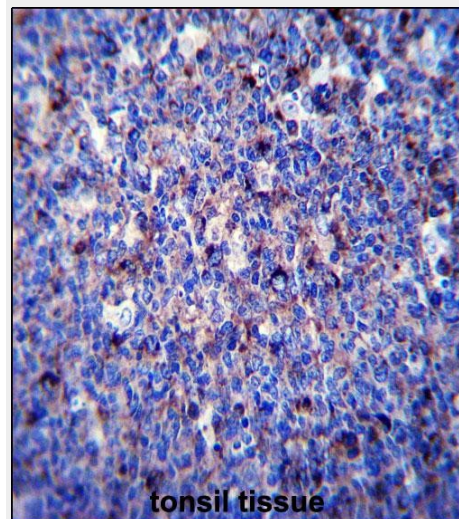
Synonyms STMY1

#### Function

Can degrade fibronectin, laminin, gelatins of type I, III, IV, and V; collagens III, IV, X, and IX, and cartilage proteoglycans.



Western blot analysis of lysates from HepG2, NCI-H460, Raji, Ramos cell line (from left to right), using MMP3 Antibody (N-term) (Cat. #AP13536a). AP13536a was diluted at 1:1000 at each lane. A goat anti-rabbit IgG H&L (HRP) at 1:5000 dilution was used as the secondary antibody. Lysates at 35ug per lane.



MMP3 Antibody (N-term) (Cat. #AP13536a) immunohistochemistry analysis in formalin fixed and paraffin embedded human tonsil tissue followed by peroxidase conjugation of the secondary antibody and DAB staining. This data demonstrates the use of MMP3 Antibody (N-term) for

Activates procollagenase.

Cellular Location

Secreted, extracellular space, extracellular matrix

### MMP3 Antibody (N-term) - Protocols

Provided below are standard protocols that you may find useful for product applications.

- [□ Western Blot](#)
- [□ Blocking Peptides](#)
- [□ Dot Blot](#)
- [□ Immunohistochemistry](#)
- [□ Immunofluorescence](#)
- [□ Immunoprecipitation](#)
- [□ Flow Cytometry](#)
- [□ Cell Culture](#)

### MMP3 Antibody (N-term) - Background

Proteins of the matrix metalloproteinase (MMP) family are involved in the breakdown of extracellular matrix in normal physiological processes, such as embryonic development, reproduction, and tissue remodeling, as well as in disease processes, such as arthritis and metastasis. Most MMP's are secreted as inactive proproteins which are activated when cleaved by extracellular proteinases. This gene encodes an enzyme which degrades fibronectin, laminin, collagens III, IV, IX, and X, and cartilage proteoglycans. The enzyme is thought to be involved in wound repair, progression of atherosclerosis, and tumor initiation. The gene is part of a cluster of MMP genes which localize to chromosome 11q22.3.

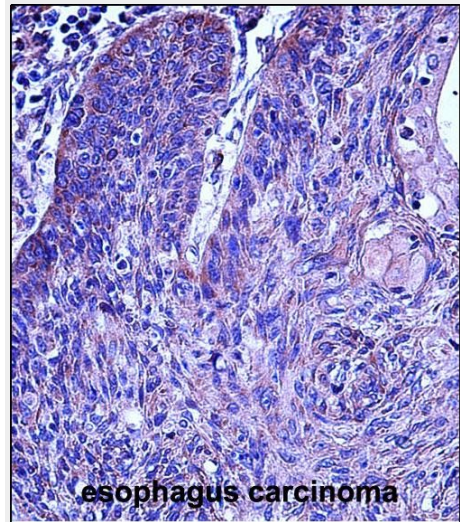
### MMP3 Antibody (N-term) - References

Fallah, S., et al. J. Physiol. Biochem. 66(4):359-364(2010) Romero, R., et al. Am. J. Obstet. Gynecol. 203 (4), 361 (2010) : Nikopensus, T., et al. Birth Defects Res. Part A Clin. Mol. Teratol. 88(9):748-756(2010) Skorupski, P., et al. Ginekol. Pol. 81(8):594-599(2010) Yeh, Y.C., et al. BMC Microbiol. 10, 218 (2010) :

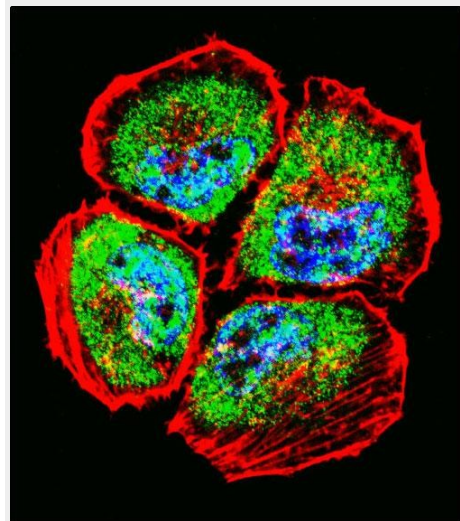
### MMP3 Antibody (N-term) - Citations

- [Evdiamine Induces Apoptosis and Inhibits Migration of HCT-116 Human Colorectal Cancer Cells.](#)

immunohistochemistry. Clinical relevance has not been evaluated.



MMP3 Antibody (N-term) (Cat. #AP13536a) immunohistochemistry analysis in formalin fixed and paraffin embedded human esophagus carcinoma followed by peroxidase conjugation of the secondary antibody and DAB staining. This data demonstrates the use of MMP3 Antibody (N-term) for immunohistochemistry. Clinical relevance has not been evaluated.



Confocal immunofluorescent analysis of MMP3 Antibody (N-term)(Cat#AP13536a) with NCI-H460 cell followed by Alexa Fluor 488-conjugated goat anti-rabbit IgG (green). Actin filaments have been labeled with Alexa Fluor 555 phalloidin (red). DAPI was used to stain the cell nuclear (blue).