

CPM Antibody (Center)

Peptide Affinity Purified Rabbit Polyclonal Antibody (Pab)
Catalog # AP11458c-400 □

Specification

CPM Antibody (Center) - Product info

Application	WB, IHC-P
Primary Accession	P14384
Other Accession	NP_938079.1 , NP_001865.1 , NP_001005502.1
Reactivity	Human
Host	Rabbit
Clonality	Polyclonal
Isotype	Rabbit Ig
Clone Names	RB19019

CPM Antibody (Center) - Additional info

Gene ID 1368

Other Names
Carboxypeptidase M, CPM, CPM

Target/Specificity

This CPM antibody is generated from rabbits immunized with a KLH conjugated synthetic peptide between 212-241 amino acids from the Central region of human CPM.

Dilution

WB~~1:1000
IHC-P~~1:100

Format

Purified polyclonal antibody supplied in PBS with 0.09% (W/V) sodium azide. This antibody is purified through a protein A column, followed by peptide affinity purification.

Storage

Maintain refrigerated at 2-8°C for up to 2 weeks. For long term storage store at -20°C in small aliquots to prevent freeze-thaw cycles.

Precautions

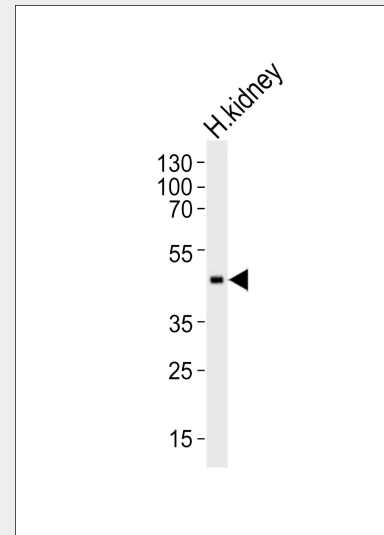
CPM Antibody (Center) is for research use only and not for use in diagnostic or therapeutic procedures.

CPM Antibody (Center) - Protein Information

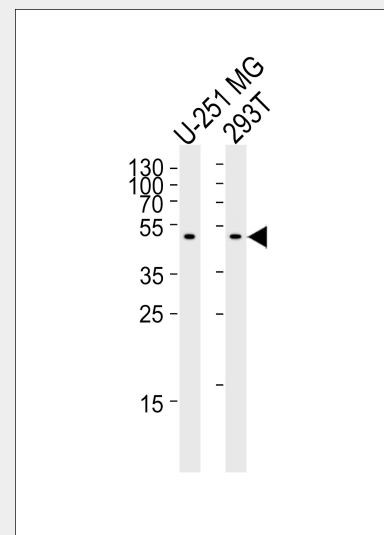
Name CPM

Function

Specifically removes C-terminal basic residues (Arg or Lys) from peptides and proteins. It is believed to play important roles in the control of peptide hormone and growth factor activity at the cell surface, and in the membrane-localized degradation of extracellular proteins.



Western blot analysis of lysate from human kidney tissue lysate, using CPM Antibody (Center)(Cat. #AP11458c). AP11458c was diluted at 1:1000. A goat anti-rabbit IgG H&L(HRP) at 1:5000 dilution was used as the secondary antibody. Lysate at 35ug.



Western blot analysis of lysates from U-251 MG, 293T cell line (from left to right), using CPM Antibody (Center)(Cat. #AP11458c). AP11458c was diluted at 1:1000 at each lane. A goat anti-rabbit IgG H&L(HRP) at 1:5000 dilution was used as the secondary antibody. Lysates at 35ug per lane.

Cellular Location
Cell membrane; Lipid-anchor, GPI-anchor

CPM Antibody (Center) - Protocols

Provided below are standard protocols that you may find useful for product applications.

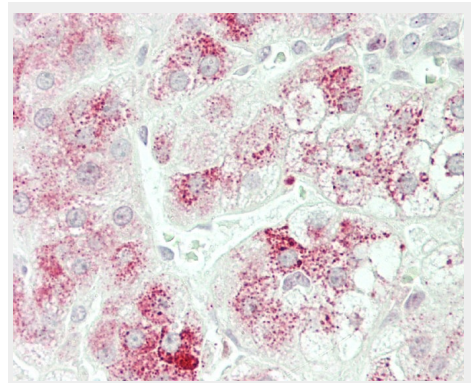
- [□Western Blot](#)
- [□Blocking Peptides](#)
- [□Dot Blot](#)
- [□Immunohistochemistry](#)
- [□Immunofluorescence](#)
- [□Immunoprecipitation](#)
- [□Flow Cytometry](#)
- [□Cell Culture](#)

CPM Antibody (Center) - Background

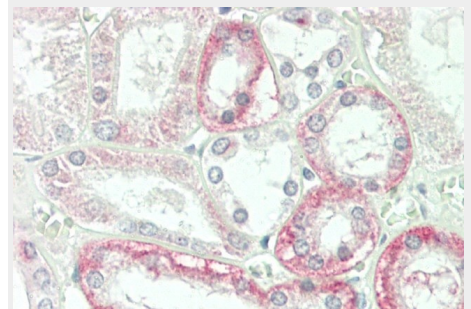
The protein encoded by this gene is a membrane-bound arginine/lysine carboxypeptidase. Its expression is associated with monocyte to macrophage differentiation. This encoded protein contains hydrophobic regions at the amino and carboxy termini and has 6 potential asparagine-linked glycosylation sites. The active site residues of carboxypeptidases A and B are conserved in this protein. Three alternatively spliced transcript variants encoding the same protein have been described for this gene. [provided by RefSeq].

CPM Antibody (Center) - References

Rietschel, M., et al. *Biol. Psychiatry* 68(6):578-585(2010)
Erickson-Johnson, M.R., et al. *Mod. Pathol.* 22(12):1541-1547(2009)
Marquez-Curtis, L., et al. *Stem Cells* 26(5):1211-1220(2008)
Zhang, X., et al. *J. Biol. Chem.* 283(12):7994-8004(2008)
Elortza, F., et al. *J. Proteome Res.* 5(4):935-943(2006)



Formalin-fixed and paraffin-embedded H.adrenal tissue reacted with CPM Antibody (Center) (Cat#AP11458c).



Formalin-fixed and paraffin-embedded H.kidney tissue reacted with CPM Antibody (Center) (Cat#AP11458c).