

JOSD2 Antibody (N-term)
 Peptide Affinity Purified Rabbit Polyclonal Antibody (Pab)
 Catalog # AP10599a-400 □

Specification

JOSD2 Antibody (N-term) - Product info

Application	FC, WB
Primary Accession	Q8TAC2
Other Accession	Q9CR30 , NP_612207.1
Reactivity	Human
Host	Rabbit
Clonality	Polyclonal
Isotype	Rabbit Ig
Clone Names	RB27927
Calculated MW	20756

JOSD2 Antibody (N-term) - Additional info

Gene ID 126119

Other Names
 Josephin-2, Josephin domain-containing protein 2, JOSD2

Target/Specificity
 This JOSD2 antibody is generated from rabbits immunized with a KLH conjugated synthetic peptide between 33-61 amino acids from the N-terminal region of human JOSD2.

Dilution
 WB~~1:1000
 FC~~1:10~50

Format
 Purified polyclonal antibody supplied in PBS with 0.09% (W/V) sodium azide. This antibody is purified through a protein A column, followed by peptide affinity purification.

Storage
 Maintain refrigerated at 2-8°C for up to 2 weeks. For long term storage store at -20°C in small aliquots to prevent freeze-thaw cycles.

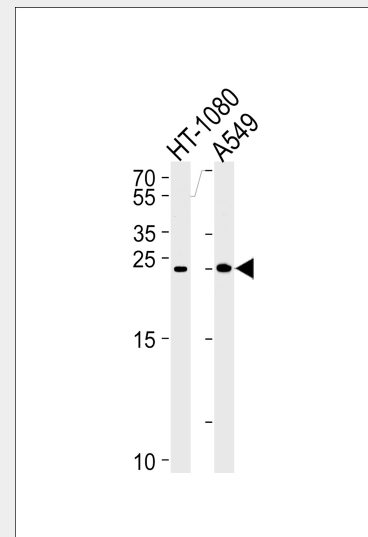
Precautions
 JOSD2 Antibody (N-term) is for research use only and not for use in diagnostic or therapeutic procedures.

JOSD2 Antibody (N-term) - Protein Information

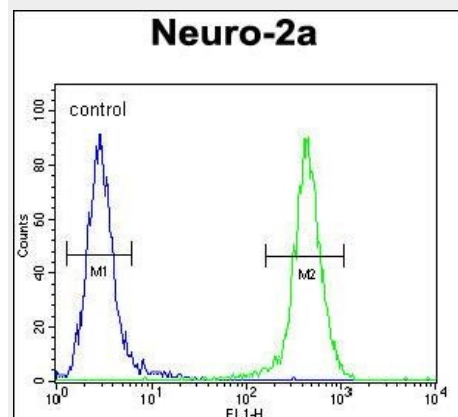
Name JOSD2

Function
 Cleaves 'Lys-63'-linked poly-ubiquitin chains, and with lesser efficiency 'Lys-48'-linked poly-ubiquitin chains (in vitro). May act as a deubiquitinating enzyme.

Cellular Location
 Cytoplasm, cytosol



Western blot analysis of lysates from HT-1080, A549 cell line (from left to right), using JOSD2 Antibody (N-term)(Cat. #AP10599a). AP10599a was diluted at 1:1000 at each lane. A goat anti-rabbit IgG H&L(HRP) at 1:5000 dilution was used as the secondary antibody. Lysates at 35ug per lane.



JOSD2 Antibody (N-term) (Cat. #AP10599a) flow cytometric analysis of Neuro-2a cells (right histogram) compared to a negative control cell (left histogram). FITC-conjugated goat-anti-rabbit secondary antibodies were used for the analysis.

JOSD2 Antibody (N-term) - Protocols

Provided below are standard protocols that you may find useful for product applications.

- [□ Western Blot](#)
- [□ Blocking Peptides](#)
- [□ Dot Blot](#)
- [□ Immunohistochemistry](#)
- [□ Immunofluorescence](#)
- [□ Immunoprecipitation](#)
- [□ Flow Cytometry](#)
- [□ Cell Culture](#)

JOSD2 Antibody (N-term) - Background

The specific function of Josephin-2 is not yet known.

JOSD2 Antibody (N-term) - References

Albrecht, M., et al. Proteins 50(2):355-370(2003)