

S6A12 Antibody (N-term)

Peptide Affinity Purified Rabbit Polyclonal Antibody (Pab)
 Catalog # AP10503a-400 □

Specification

S6A12 Antibody (N-term) - Product info

Application	WB, FC
Primary Accession	P48065
Other Accession	NP_003035.3
Reactivity	Human
Host	Rabbit
Clonality	Polyclonal
Isotype	Rabbit Ig
Clone Names	RB24381
Calculated MW	69368

S6A12 Antibody (N-term) - Additional info

Gene ID 6539

Other Names

Sodium- and chloride-dependent betaine transporter, BGT-1,
 Na(+)/Cl(-) betaine/GABA transporter, Solute carrier family 6
 member 12, SLC6A12

Target/Specificity

This S6A12 antibody is generated from rabbits immunized with
 a KLH conjugated synthetic peptide between 9-38 amino acids
 from the N-terminal region of human S6A12.

Dilution

WB~~1:1000
 FC~~1:10~50

Format

Purified polyclonal antibody supplied in PBS with 0.09% (W/V)
 sodium azide. This antibody is purified through a protein A
 column, followed by peptide affinity purification.

Storage

Maintain refrigerated at 2-8°C for up to 2 weeks. For long term
 storage store at -20°C in small aliquots to prevent freeze-thaw
 cycles.

Precautions

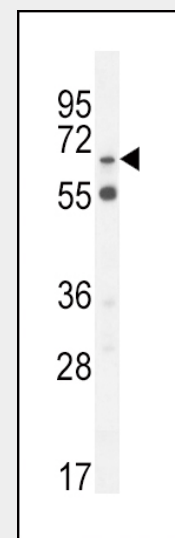
S6A12 Antibody (N-term) is for research use only and not for
 use in diagnostic or therapeutic procedures.

S6A12 Antibody (N-term) - Protein Information

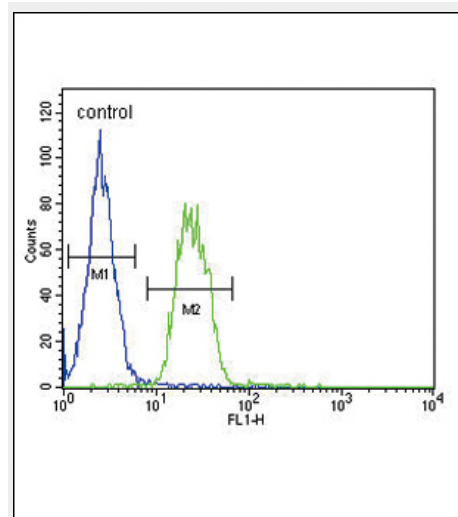
Name SLC6A12

Function

Transports betaine and GABA. May have a role in regulation of
 GABAergic transmission in the brain through the reuptake of
 GABA into presynaptic terminals, as well as in osmotic
 regulation.



S6A12 Antibody (N-term) (Cat.
 #AP10503a) western blot analysis in
 MDA-MB231 cell line lysates
 (35ug/lane). This demonstrates the S6A12
 antibody detected the S6A12 protein
 (arrow).



S6A12 Antibody (N-term) (Cat.
 #AP10503a) flow cytometric analysis of
 MDA-MB231 cells (right histogram)
 compared to a negative control cell (left
 histogram). FITC-conjugated
 goat-anti-rabbit secondary antibodies
 were used for the analysis.

Cellular Location

Membrane; Multi-pass membrane protein.

Tissue Location

Liver, heart, skeletal muscle, placenta, and a widespread distribution in the brain

S6A12 Antibody (N-term) - Protocols

Provided below are standard protocols that you may find useful for product applications.

- [□Western Blot](#)
- [□Blocking Peptides](#)
- [□Dot Blot](#)
- [□Immunohistochemistry](#)
- [□Immunofluorescence](#)
- [□Immunoprecipitation](#)
- [□Flow Cytometry](#)
- [□Cell Culture](#)

S6A12 Antibody (N-term) - Background

Transports betaine and GABA. May have a role in regulation of GABAergic transmission in the brain through the reuptake of GABA into presynaptic terminals, as well as in osmotic regulation.

S6A12 Antibody (N-term) - References

Pasaje, C.F., et al. Ann. Hum. Genet. 74(4):326-334(2010) Kottgen, A., et al. Nat. Genet. 42(5):376-384(2010) Yokoyama, K., et al. Nephron Clin Pract 115 (4), C237-C243 (2010) : Chapuis, J., et al. Mol. Psychiatry 14(11):1004-1016(2009) Gratacos, M., et al. Am. J. Med. Genet. B Neuropsychiatr. Genet. 150B (6), 808-816 (2009) :