

CEPT1 Antibody (N-term)
Peptide Affinity Purified Rabbit Polyclonal Antibody (Pab)
Catalog # AP10372a-400 □

Specification

CEPT1 Antibody (N-term) - Product info

Application	IHC-P-Leica, WB
Primary Accession	Q9Y6K0
Other Accession	Q7ZYQ3 , Q6AXM5 , Q8BGS7 , NP_001007795.1 , NP_006081.1
Reactivity	Human, Mouse
Predicted	Mouse, Rat, Xenopus
Host	Rabbit
Clonality	Polyclonal
Isotype	Rabbit Ig
Clone Names	RB28024
Calculated MW	46554

CEPT1 Antibody (N-term) - Additional info

Gene ID 10390

Other Names
Choline/ethanolaminephosphotransferase 1, hCEPT1, CEPT1

Target/Specificity
This CEPT1 antibody is generated from rabbits immunized with a KLH conjugated synthetic peptide between 29-57 amino acids from the N-terminal region of human CEPT1.

Dilution
IHC-P-Leica~~1:500
WB~~1:1000

Format
Purified polyclonal antibody supplied in PBS with 0.09% (W/V) sodium azide. This antibody is purified through a protein A column, followed by peptide affinity purification.

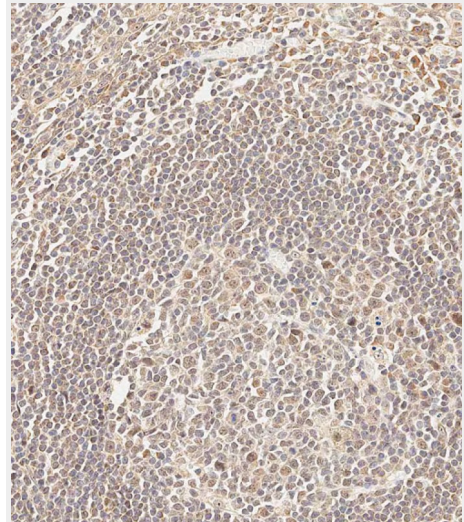
Storage
Maintain refrigerated at 2-8°C for up to 2 weeks. For long term storage store at -20°C in small aliquots to prevent freeze-thaw cycles.

Precautions
CEPT1 Antibody (N-term) is for research use only and not for use in diagnostic or therapeutic procedures.

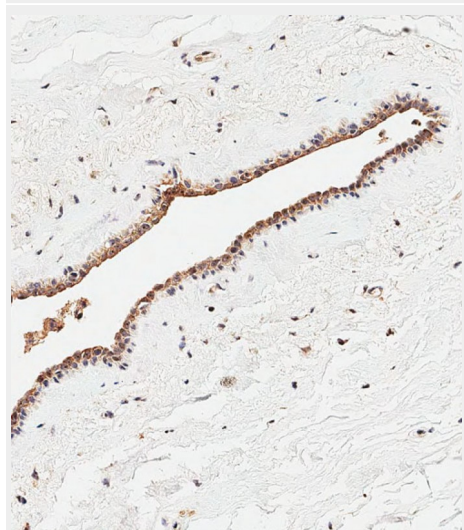
CEPT1 Antibody (N-term) - Protein Information

Name CEPT1

Function
Catalyzes both phosphatidylcholine and phosphatidylethanolamine biosynthesis from CDP-choline and CDP- ethanolamine, respectively. Involved in



Immunohistochemical analysis of paraffin-embedded Human tonsil tissue using AP10372a performed on the Leica® BOND RXm. Tissue was fixed with formaldehyde at room temperature, antigen retrieval was by heat mediation with a EDTA buffer (pH9. 0). Samples were incubated with primary antibody(1:500) for 1 hours at room temperature. A undiluted biotinylated CRF Anti-Polyvalent HRP Polymer antibody was used as the secondary antibody.



Immunohistochemical analysis of paraffin-embedded Human breast tissue using AP10372a performed on the

protein-dependent process of phospholipid transport to distribute phosphatidyl choline to the luminal surface. Has a higher cholinephosphotransferase activity than ethanolaminephosphotransferase activity.

Cellular Location

Endoplasmic reticulum membrane; Multi-pass membrane protein. Nucleus membrane; Multi-pass membrane protein

Tissue Location

Ubiquitously expressed.

CEPT1 Antibody (N-term) - Protocols

Provided below are standard protocols that you may find useful for product applications.

- [□Western Blot](#)
- [□Blocking Peptides](#)
- [□Dot Blot](#)
- [□Immunohistochemistry](#)
- [□Immunofluorescence](#)
- [□Immunoprecipitation](#)
- [□Flow Cytometry](#)
- [□Cell Culture](#)

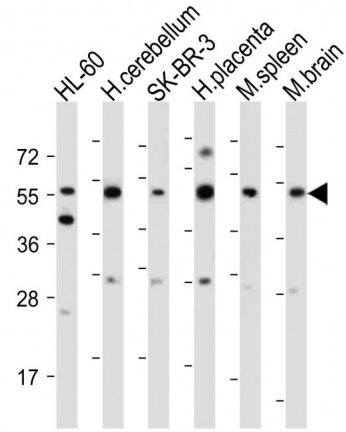
CEPT1 Antibody (N-term) - Background

Cholinephosphotransferase catalyses the final step in the synthesis of phosphatidylcholine by the transfer of phosphocholine from CDP-choline to diacylglycerol. The synthesis of phosphatidylethanolamine by ethanolaminephosphotransferase occurs using an analogous reaction. This gene codes for a choline/ethanolaminephosphotransferase. The protein can synthesize either choline- or ethanolamine- containing phospholipids. Two alternatively spliced transcripts encoding the same isoform have been identified.

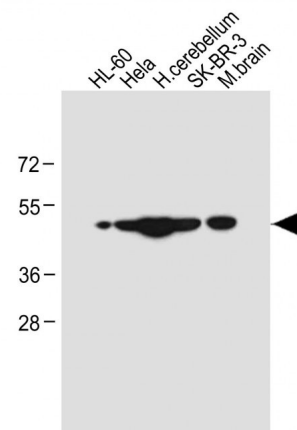
CEPT1 Antibody (N-term) - References

Rose, J.E., et al. Mol. Med. 16 (7-8), 247-253 (2010) ; Lamesch, P., et al. Genomics 89(3):307-315(2007) Wright, M.M., et al. Lipids 37(7):663-672(2002) Henneberry, A.L., et al. Biochem. J. 339 (PT 2), 291-298 (1999) ;

Leica® BOND RXm. Tissue was fixed with formaldehyde at room temperature, antigen retrieval was by heat mediation with a EDTA buffer (pH9. 0). Samples were incubated with primary antibody(1:500) for 1 hours at room temperature. A undiluted biotinylated CRF Anti-Polyvalent HRP Polymer antibody was used as the secondary antibody.

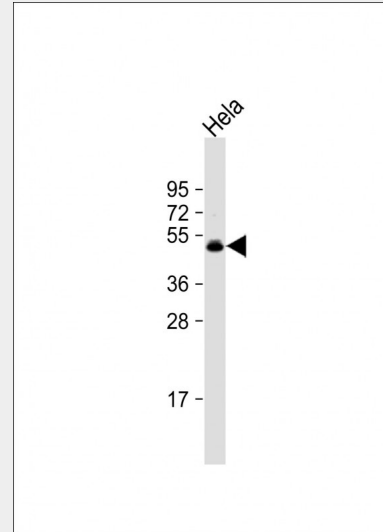


All lanes : Anti-CEPT1 Antibody (N-term) at 1:2000 dilution Lane 1: HL-60 whole cell lysate Lane 2: Human cerebellum tissue lysate Lane 3: SK-BR-3 whole cell lysate Lane 4: Human placenta tissue lysate Lane 5: Mouse spleen tissue lysate Lane 6: Mouse brain tissue lysate Lysates/proteins at 20 µg per lane. Secondary Goat Anti-Rabbit IgG, (H+L), Peroxidase conjugated at 1/10000 dilution. Predicted band size : 47 kDa Blocking/Dilution buffer: 5% NFDN/TBST.



All lanes : Anti-CEPT1 Antibody (N-term) at 1:4000 dilution Lane 1: HL-60 whole cell lysate Lane 2: Hela whole cell lysate Lane 3: Human cerebellum tissue lysate Lane 4: SK-BR-3 whole cell lysate Lane 5: Mouse brain tissue lysate Lysates/proteins at 20 µg per lane.

Secondary Goat Anti-Rabbit IgG, (H+L),
Peroxidase conjugated at 1/10000
dilution. Predicted band size : 47 kDa
Blocking/Dilution buffer: 5% NFDN/TBST.



Anti-CEPT1 Antibody (N-term) at 1:1000
dilution + HeLa whole cell lysate
Lysates/proteins at 20 µg per lane.
Secondary Goat Anti-Rabbit IgG, (H+L),
Peroxidase conjugated at 1/10000
dilution. Predicted band size : 47 kDa
Blocking/Dilution buffer: 5% NFDN/TBST.