

C12orf30 Antibody (Center)

Peptide Affinity Purified Rabbit Polyclonal Antibody (Pab)
 Catalog # AP10270C-400 □

Specification

C12orf30 Antibody (Center) - Product info

Application	WB
Primary Accession	Q14CX7
Other Accession	NP_079229.2
Reactivity	Human, Mouse
Host	Rabbit
Clonality	Polyclonal
Isotype	Rabbit Ig
Clone Names	RB27630
Calculated MW	112292

C12orf30 Antibody (Center) - Additional info

Gene ID 80018

Other Names

N-alpha-acetyltransferase 25, NatB auxiliary subunit,
 Mitochondrial distribution and morphology protein 20,
 N-terminal acetyltransferase B complex subunit MDM20, NatB
 complex subunit MDM20, N-terminal acetyltransferase B
 complex subunit NAA25, p120, NAA25, C12orf30, MDM20,
 NAP1

Target/Specificity

This C12orf30 antibody is generated from rabbits immunized
 with a KLH conjugated synthetic peptide between 720-748
 amino acids from the Central region of human C12orf30.

Dilution

WB~1:1000

Format

Purified polyclonal antibody supplied in PBS with 0.09% (W/V)
 sodium azide. This antibody is purified through a protein A
 column, followed by peptide affinity purification.

Storage

Maintain refrigerated at 2-8°C for up to 2 weeks. For long term
 storage store at -20°C in small aliquots to prevent freeze-thaw
 cycles.

Precautions

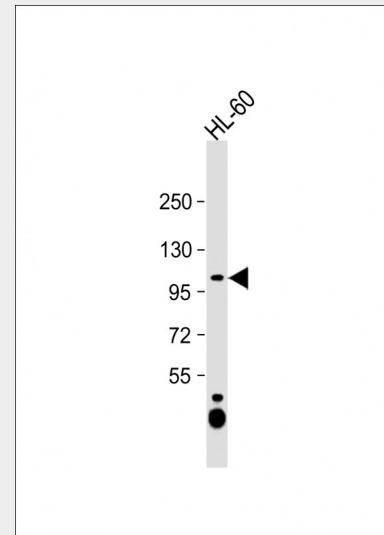
C12orf30 Antibody (Center) is for research use only and not for
 use in diagnostic or therapeutic procedures.

C12orf30 Antibody (Center) - Protein Information

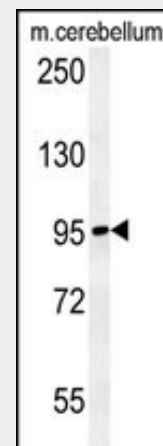
Name NAA25

Synonyms C12orf30, MDM20, NAP1

Function



Anti-C12orf30 Antibody (Center) at
 1:1000 dilution + HL-60 whole cell lysate
 Lysates/proteins at 20 µg per lane.
 Secondary Goat Anti-Rabbit IgG, (H+L),
 Peroxidase conjugated at 1/10000
 dilution. Predicted band size : 112 kDa
 Blocking/Dilution buffer: 5% NFD/MTBST.



C12orf30 Antibody (Center) (Cat.
 #AP10270c) western blot analysis in
 mouse cerebellum tissue lysates
 (15µg/lane). This demonstrates the
 C12orf30 antibody detected C12orf30
 protein (arrow).

Non-catalytic subunit of the NatB complex which catalyzes acetylation of the N-terminal methionine residues of peptides beginning with Met-Asp-Glu. May play a role in normal cell-cycle progression.

Cellular Location
Cytoplasm.

C12orf30 Antibody (Center) - Protocols

Provided below are standard protocols that you may find useful for product applications.

- [□ Western Blot](#)
- [□ Blocking Peptides](#)
- [□ Dot Blot](#)
- [□ Immunohistochemistry](#)
- [□ Immunofluorescence](#)
- [□ Immunoprecipitation](#)
- [□ Flow Cytometry](#)
- [□ Cell Culture](#)

C12orf30 Antibody (Center) - Background

This gene encodes the auxiliary subunit of the heteromeric N-terminal acetyltransferase B complex. This complex acetylates methionine residues that are followed by acidic or asparagine residues.

C12orf30 Antibody (Center) - References

Feng, T., et al. Hum. Genet. 128(3):269-280(2010) Pierce, B.L., et al. Hum. Hered. 69(3):193-201(2010) Douroudis, K., et al. BMC Med. Genet. 11, 11 (2010) : Prahalad, S., et al. Arthritis Rheum. 60(7):2124-2130(2009) Polevoda, B., et al. BMC Proc 3 SUPPL 6, S2 (2009) :

C12orf30 Antibody (Center) - Citations

- [pTSara-NatB, an improved N-terminal acetylation system for recombinant protein expression in E. coli.](#)