

ABCC3 Antibody (Center)
Peptide Affinity Purified Rabbit Polyclonal Antibody (Pab)
Catalog # AP10144C-400 □

Specification

ABCC3 Antibody (Center) - Product info

Application	WB
Primary Accession	Q15438
Other Accession	NP_003777.2 NP_001137542.1
Reactivity	Human
Host	Rabbit
Clonality	Polyclonal
Isotype	Rabbit Ig
Clone Names	RB22384

ABCC3 Antibody (Center) - Additional info

Gene ID 8714

Other Names

Canalicular multispecific organic anion transporter 2, ATP-binding cassette sub-family C member 3, Multi-specific organic anion transporter D, MOAT-D, Multidrug resistance-associated protein 3, ABCC3, CMOAT2, MLP2, MRP3

Target/Specificity

This ABCC3 antibody is generated from rabbits immunized with a KLH conjugated synthetic peptide between 899-925 amino acids from the Central region of human ABCC3.

Dilution

WB~~1:1000

Format

Purified polyclonal antibody supplied in PBS with 0.09% (W/V) sodium azide. This antibody is purified through a protein A column, followed by peptide affinity purification.

Storage

Maintain refrigerated at 2-8°C for up to 2 weeks. For long term storage store at -20°C in small aliquots to prevent freeze-thaw cycles.

Precautions

ABCC3 Antibody (Center) is for research use only and not for use in diagnostic or therapeutic procedures.

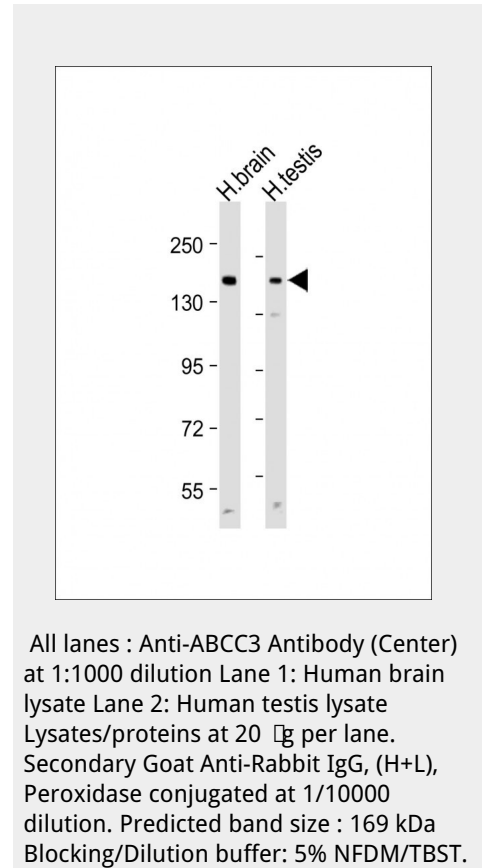
ABCC3 Antibody (Center) - Protein Information

Name ABCC3

Synonyms CMOAT2, MLP2, MRP3

Function

May act as an inducible transporter in the biliary and intestinal excretion of organic anions. Acts as an alternative route for the



export of bile acids and glucuronides from cholestatic hepatocytes (By similarity).

Cellular Location

Membrane; Multi-pass membrane protein.

Tissue Location

Mainly expressed in the liver. Also expressed in small intestine, colon, prostate, testis, brain and at a lower level in the kidney

ABCC3 Antibody (Center) - Protocols

Provided below are standard protocols that you may find useful for product applications.

- [□Western Blot](#)
- [□Blocking Peptides](#)
- [□Dot Blot](#)
- [□Immunohistochemistry](#)
- [□Immunofluorescence](#)
- [□Immunoprecipitation](#)
- [□Flow Cytometry](#)
- [□Cell Culture](#)

ABCC3 Antibody (Center) - Background

The protein encoded by this gene is a member of the superfamily of ATP-binding cassette (ABC) transporters. ABC proteins transport various molecules across extra- and intra-cellular membranes. ABC genes are divided into seven distinct subfamilies (ABC1, MDR/TAP, MRP, ALD, OABP, GCN20, White). This protein is a member of the MRP subfamily which is involved in multi-drug resistance. The specific function of this protein has not yet been determined; however, this protein may play a role in the transport of biliary and intestinal excretion of organic anions. Alternatively spliced variants which encode different protein isoforms have been described; however, not all variants have been fully characterized.

ABCC3 Antibody (Center) - References

Bailey, S.D., et al. Diabetes Care 33(10):2250-2253(2010) Hoffman, A.D., et al. Protein J. 29(5):373-379(2010) Liu, C.Y., et al. Carcinogenesis 31(7):1259-1263(2010) Rose, J.E., et al. Mol. Med. 16 (7-8), 247-253 (2010) : Moyer, A.M., et al. Cancer Epidemiol. Biomarkers Prev. 19(3):811-821(2010)