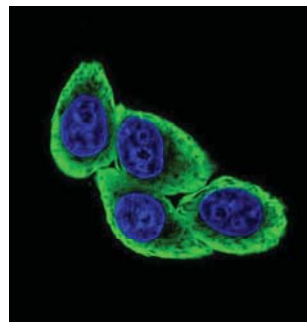
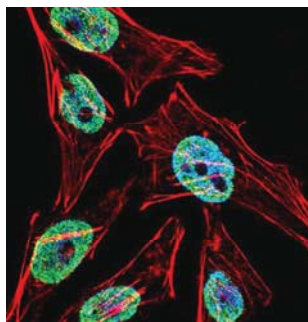
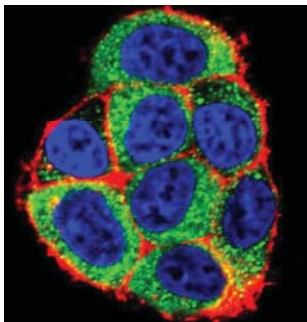
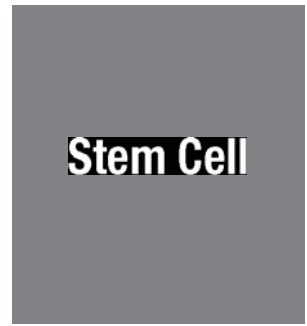
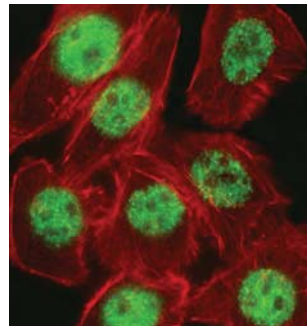
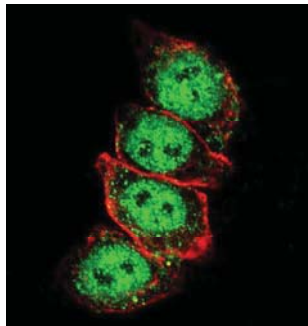
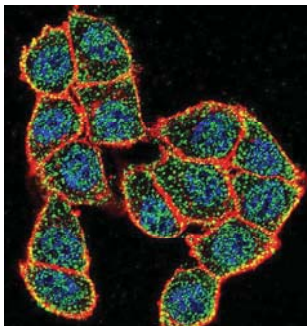
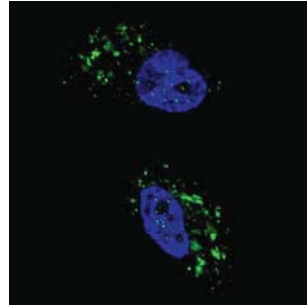
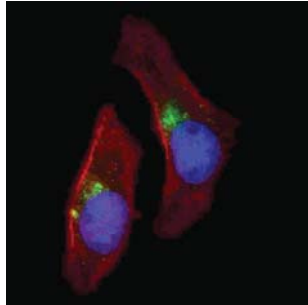
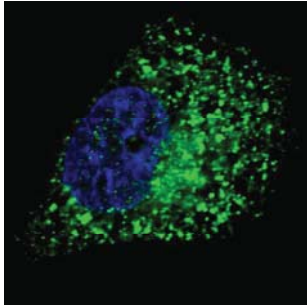


## The Select List of Stellar, In-house Developed Antibodies from ABGENT



## What do Stellar antibodies Mean at ABGENT?

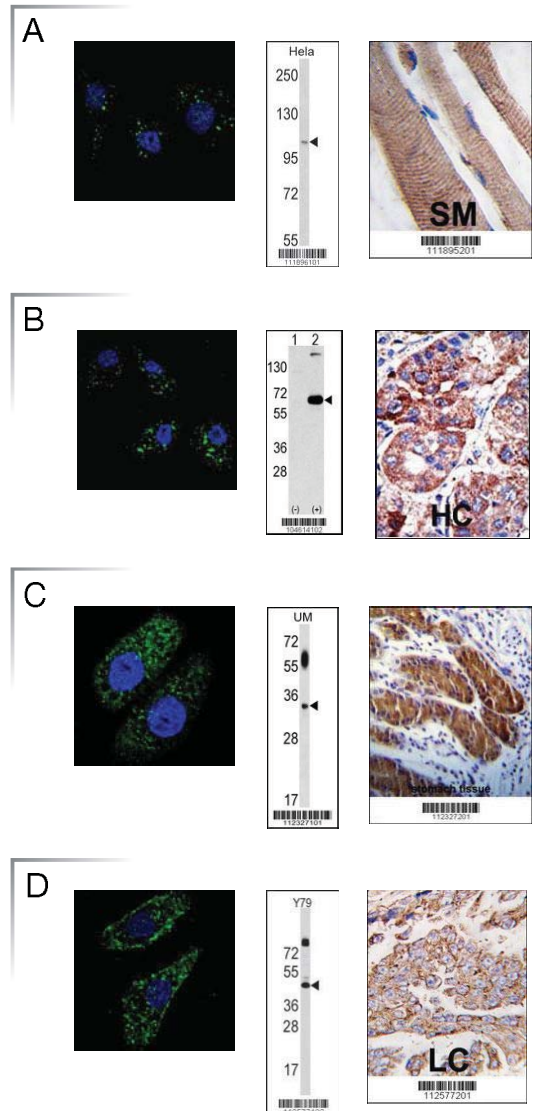
ABGENT offers new and existing “Stellar” antibodies to the most important targets:

- √ In-house production and validation ensure product quality, availability, consistency and tech support.
- √ Validation supported by literature and key bioinformatics sources, e.g. protein localization, protein expression levels and model systems.
- √ Many “Stellar” products validated in IF as well as WB.
- √ Validated in multiple cell types and species.
- √ Antibodies optimized to a 1:1000 dilution in WB--this takes the guesswork out of your optimization.
- √ Over 1,500 new “Stellar” antibodies released annually with a focus on autophagy, neurodegenerative diseases and stem cells.
- √ Most products available within 2-3 days.
- √ Low risk, small sizes available for all stellar antibodies.

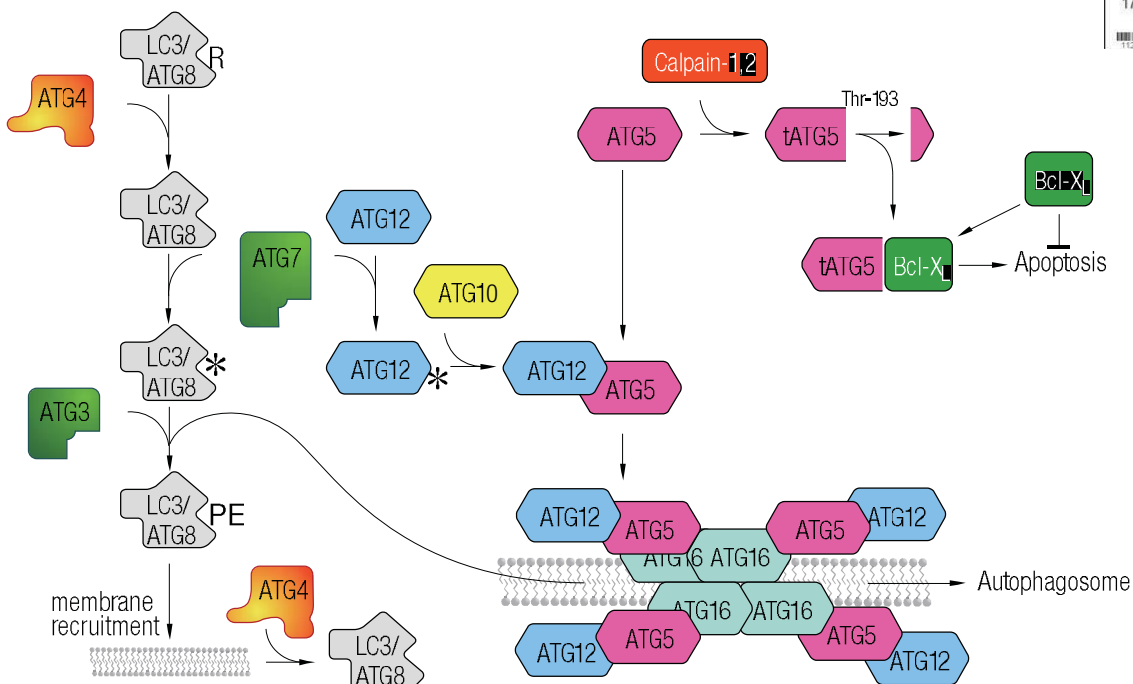
# Autophagy Products

Catalog No	Title	Reactivity	Predicted	Application
AM1818a	Beclin 1 Antibody (Ascites)	H		IF, WB, IHC
AP1806a	Cleaved LC3B Antibody	H, M	B	IF, ICC
<b>A</b> AP1851e	PI3KC3 Antibody (S34)	H	M, P, R, X	IF, WB, IHC
AP1827a	LAMP3 Antibody (N-term)	H		IF, WB
AP1809c	ATG4B Antibody (C-term)	H	M	IF, WB, IHC
AP3766a	Phospho-GATA6(Y271) Antibody	H		IF, DB
AM1800a	LC3 Antibody (APG8)	H, M, R		IF, WB, IHC
AP1805a	Cleaved LC3A Antibody	H, M	B, R	IF, WB, IHC, ICC
AP1813c	ATG7 Antibody	H, M	R	IF, WB, IHC
AP1814c	ATG9A Antibody (C-term)	H		IF, WB, IHC
<b>B</b> AP2183b	SQSTM1 (p62) Antibody (C-term)	H	M, R	IF, WB, IHC
AP1813d	ATG7 Antibody (C-term)	H	C, M, R	IF, WB, IHC
<b>C</b> AP1812c	APG5 Antibody	H		IF, WB, IHC
AP8104b	APG1 (ULK1) Antibody (Center)	H		IF, WB
AP1817b	ATG16L Antibody	H, M		IF, WB, IHC
AP1850b	UVRAG Antibody (C-term)	H, M		IF, WB, IHC
AP1802a	LC3 Antibody (APG8B) (N-term)	H, R	B	IF, WB, IHC
<b>D</b> AP1823a	LAMP1 Antibody (N-term)	H, M		IF, WB, IHC
AP1812a	ATG5 Antibody (N-term)	H, M	B, P, R	IF, WB, IHC
AP1811c	ATG4D Antibody (C-term)	H		IF, WB, IHC

Find more stellar antibodies on ABGENT website : [www.abgent.com.cn](http://www.abgent.com.cn)



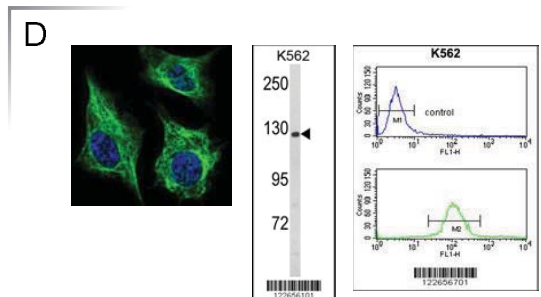
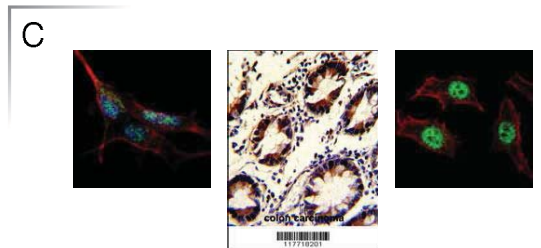
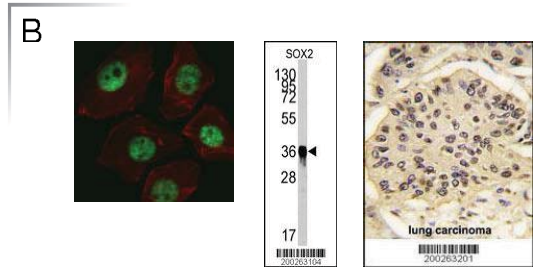
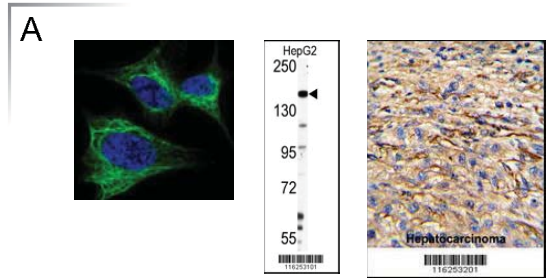
## Autophagy Expansion & Apoptosis



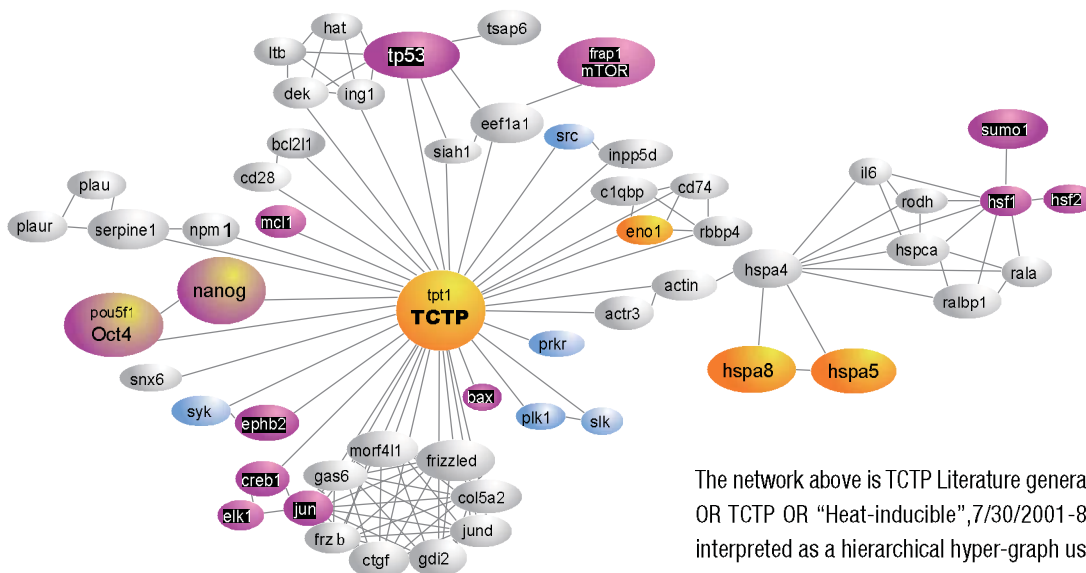
The network above is major proteins associated with autophagy and their interactions during the autophagy process.

# Stem Cell Products

Catalog No	Title	Reactivity	Predicted	Application
AP2034d	PDX1 Antibody (T11)	H	M,R	IF,WB,IHC
AP3732a	Phospho-LIN28(S134) Antibody	H		IF,DB
AP1486e	NANOG Antibody (S285)	H		WB,IF
<b>A</b> AP2020d	Nestin Antibody (S1409)	H		IF,WB,IHC,FC
AP2725f	KLF4 Antibody	H	M,R	WB,IF
AP3669a	Phospho-PDX1(T11) Antibody	H	M,R	IF,DB
AM2048b	SOX2 Antibody (Ascites)	H		IF,WB,FC
AP11206c	LIN28A Antibody (Center)	M		WB,IF,IHC,FC
AP19261c	MSX1 Antibody (Center)	H,M	B	IF,WB
AP3649a	Phospho-Nanog(S71) Antibody	H	Pr	IF,DB
AP3652a	Phospho-KLF4(S245) Antibody	H	M	IF,DB
AP3750a	phospho-Sox2(S246) Antibody	H	M	IF,DB
AP2739a	Vimentin Antibody (S82)	H,M	B,Ha,Pr,R	IF,WB,IHC
AP3538a	Phospho-KIT(Y721) Antibody	H	P	IF,DB
AP10733a	ETV5 Antibody (N-term)	H		WB,FC
<b>B</b> AM2048a	SOX2 Antibody	H		IF,WB,IHC,FC
AP2725a	KLF4 Antibody (N-term C74)	H,M		WB,IF,IHC
<b>C</b> AP2725e	KLF4 Antibody	H		WB,IF,IHC
AM2137b	KIT Antibody	H		WB,IF
AP11958b	KLF4 Antibody (C-term)	H		WB,IF,FC
AP1485a	LIN28B Antibody (N-term)	H		IF,WB,IHC,FC
<b>D</b> AP8742a	Nestin Antibody	H		WB,IF,FC
AP1486a	NANOG Antibody (N-term)	H	Pr	WB,IF,IHC,FC
AP2048e	SOX2 Antibody (C265)	H	C,M,X	IF,WB,FC
AP2046c	OCT4 (OCT3) Antibody (E125)	H	B,C,Ha,M P,Pr,R,X	WB,IF
AP2739b	Vimentin Antibody (C-term)	H		IF,WB,IHC,FC
AP2745d	LGR5 Antibody (loop2)	H,M		IF,WB,IHC,FC
AP1534a	Phospho-STAT3(S727) Antibody	H,M		IF,WB



Find more stellar antibodies on ABGENT website : [www.abgent.com.cn](http://www.abgent.com.cn)

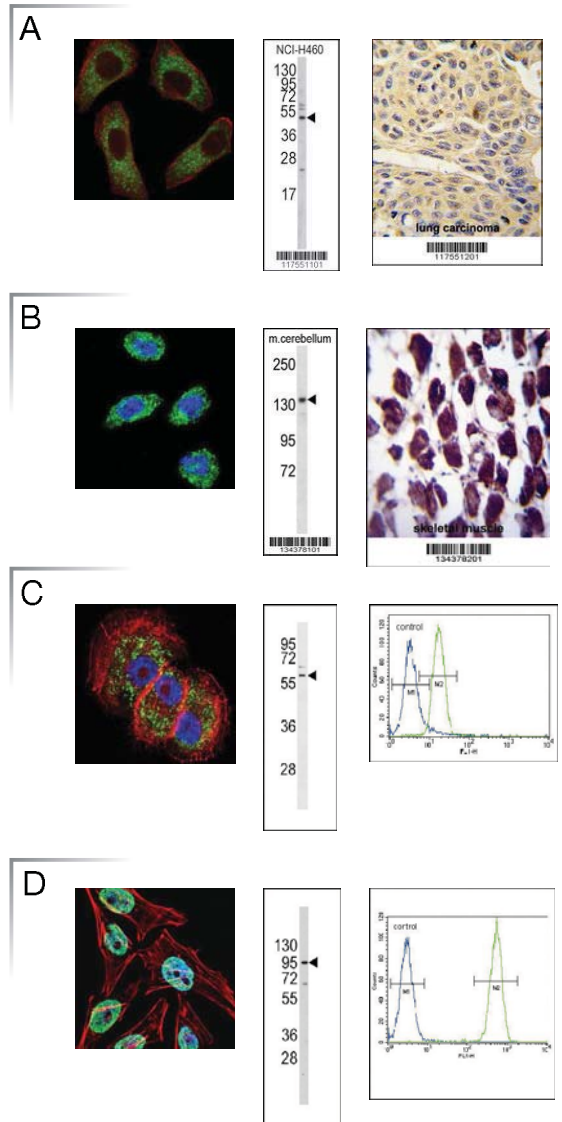


The network above is TCTP Literature generated using a Tpt1-query to PubMed ("Tpt1 OR TCTP OR "Heat-inducible",7/30/2001-8) resulting in 244 abstracts that were interpreted as a hierarchical hyper-graph using Cytoscape V2.2.

# Neuroscience Products

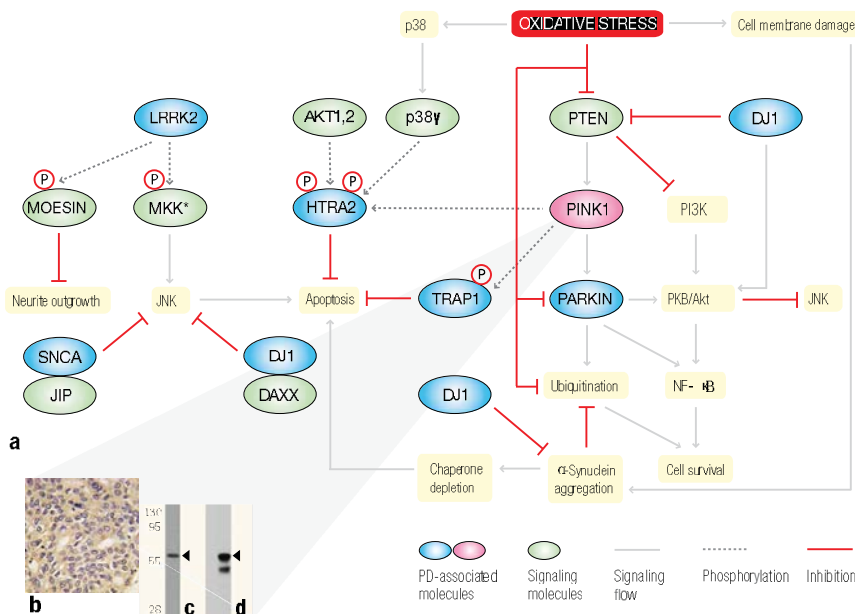
Catalog No	Title	Reactivity	Predicted	Application
<b>A</b> AP7974b	CASP9 Antibody (C-term)	H	M	IF, WB, IHC
AP7974c	CASP9 Antibody (Center)	H		WB, IHC, IF
AP8993b	JUP Antibody (C-term)	H	B, M, P, R	WB, IHC, FC
AP9097a	KIF11 Antibody (N-term)	H		WB, IHC, FC
AP2126a	UCHL1 Antibody (N-term)	H, M	B, P	WB, IHC, IF, FC
AP10172b	CCL4 Antibody (Center)	H, M		WB, IHC
<b>B</b> AP14948b	POLG Antibody (C-term)	M	H, R	WB, FC, IF, IHC
AP12326c	DVL1 Antibody (Center)	H	M, R	WB, IHC, IF
AP13222b	WNT16 Antibody (C-term)	H	M	WB, IHC
AP14847a	Mouse Gsk3b Antibody (N-term)	M	H, R	WB, IHC
AP2401b	RAGE (AGER) Antibody (C-term)	H		WB, IHC
AP3035a	Phospho-Bad(S134) Antibody	H	M, R	IHC, WB
AP4861a	AGER Antibody (N-term)	H, M		WB, IHC, FC
AP6402b	Parkin Antibody (C-term)	H, M		WB, IF, FC, IHC
AP7873a	GAPDH Antibody (N-term)	H		IHC, WB, IF
<b>C</b> AP6402a	Parkin Antibody (N-term)	H		WB, FC, IF, IHC
AP8637c	KLC1 Antibody (Center)	H	R	WB, IHC, FC
AP2126e	UCHL1 Antibody (C-term)	H, M	B, P, Pr, R	WB, IHC, IF
AM1831a	ALDH2 Antibody	H		WB, IHC, FC, IF
AP2040b	TAU Antibody (C-term)	H	B, M, R	WB, IHC, IF
AP6412a	NURR1 (NR4A2) Antibody (N-term)	H, M	B, R	WB, IHC, IF
AP9199c	GSTP1 Antibody (Center)	H		IF, WB, IHC, FC
<b>D</b> AP1410c	TERT Antibody (Center)	H		WB, FC, IF
AP4899a	HSP90B1 Antibody (N-term)	H, Ha, M	B, C, P, Pr, R	WB, IHC, FC, IF
AP7873b	GAPDH Antibody (C-term R248)	H	C, M, P, R	WB, IHC, FC, IF
AP9381c	PHOX2A Antibody (Center)	H	M, R	WB, IHC, FC, IF

Find more stellar antibodies on ABGENT website : [www.abgent.com.cn](http://www.abgent.com.cn)



The left figure is protein signaling and neuroprotective mechanism of PINK1.

The signaling pathways and biological processes are highlighted in yellow(a). ABGENT's PINK1 monoclonal antibody # AM6406a was applied for immunohistochemistry of hepatocarcinoma tissue (b). PINK1 detection in brain tissue(c) and in transfected 293 cells(d).



ABGENT Biotechnology (Suzhou) Co., Ltd.

[www.abgent.com.cn](http://www.abgent.com.cn) [www.abgent.com](http://www.abgent.com)

Tel: +86 512 69369088

Sales E-mail: [sales.abgent@wuxiapptec.com](mailto:sales.abgent@wuxiapptec.com)

Tech support E-mail: [tech.abgent@wuxiapptec.com](mailto:tech.abgent@wuxiapptec.com)