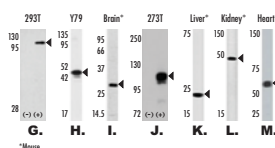


ABGENT has hundreds of neuroscience antibodies which cover key targets for neurogenesis, neurotransmitters, neural development/differentiation, and neural degeneration. Visit www.abgent.com for a complete listing.

Selected Abgent Products

Figure	Target	Tissue/Cell line	Cat#
A.	CLC4	Ratinal cells	AP6329F
B.	MIB1	Human carcinoma (HeLa)	AP2172a
C.	Nestin	Human carcinoma (HeLa)	AP2020b
D.	LRRK2	Tou-shable SV5Y	AP7099f
E.	DCLK1	Human hepatocarcinoma	AP7219f
F.	LRP5	Human hepatocarcinoma	AP4357a
G.	APP	Transfected 293T cells	AP6306a
H.	NSE	Y79 cells	AP2780a
I.	NTF3	Mouse brain	AP7763b
J.	NTRK1	Transfected 293T cells	AP7864f
K.	Neurogenin 3	Mouse liver	AP2204a
L.	PSEN2	Mouse kidney	AP6305a
M.	CEK1	Mouse heart	AP7086f



Chaperones

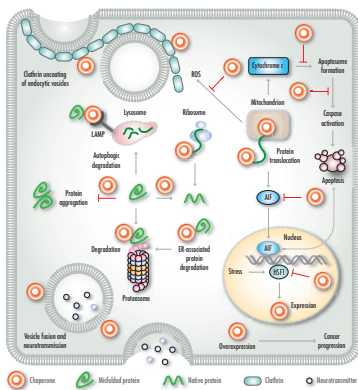


Fig. 1 Role of molecular chaperones in cellular protein homeostasis. Molecular chaperones facilitate protein folding and prevent protein aggregation. They regulate autophagy, vesicle fusion, signal transduction, apoptosis and proteasome degradation. AIP, apoptosis inducing factor; ER, endoplasmic reticulum; HSF1, heat shock transcription factor 1; LAMP, lysosomal-associated membrane protein; ROS, reactive oxygen species (1).

Molecular chaperones associated with protein-conformational disorders

Neurodegenerative disease	Disease genes	Chaperones involved	Lesions
Parkinson's disease	α-Synuclein, Parkin, UCHL1, PINK1, DJ1, HTRA2, LRRK2	HSP70, HSP40, HSP90, HSC70, CDC37, TRAP1, 14-3-3, HSPA9, CHIP	Intraocular Lewy bodies
Alzheimer's disease	APP, Presenilin 1, Presenilin 2	HSP72, HSP28, HSP27, HSP90	Extracellular senile plaques; Intraocular neurofibrillary tangles
Dementia with Lewy bodies	α-Synuclein	HSP72, HSP40, HSP40, HSP70, HSP90, HSPA5	Intraocular Lewy bodies
Familial amyotrophic lateral sclerosis	SOD1	HSC70	Intraocular inclusions
Huntington's disease	Huntingtin	HSP40, HSP70	Mutant huntingtin
Spinocerebellar ataxias	Ataxins	HSP40, HSP70	Mutant ataxin
Spinal and bulbar muscular atrophy	Androgen receptor	HSP70	Mutant androgen receptor

Table 1. Neurodegenerative disorders and related chaperones. Many neurodegenerative disorders are associated with degeneration and death of neuronal populations due to the accumulation of aggregated or misfolded proteins (14). Molecular chaperones may provide the cellular defense against protein aggregation formation. UCHL1, ubiquitin carboxyl-terminal hydrolase 1; PINK1, PINK1-induced kinase 1; DJ1, Parkinson disease (autosomal recessive, early onset) 1; HTRA2, serine peptidase 2; LRRK2, leucine-rich repeat kinase 2; HSP, heat shock protein; HSC70, heat shock cognate 70; CDC37, cell division cycle 37 homolog (S. cerevisiae); TRAP1, TRAP receptor-associated protein 1; 14-3-3, 14-3-3 protein beta/alpha; CHIP, STIP1 homology and U-box containing protein 1; APP, amyloid precursor protein; SOD1, superoxide dismutase 1 (1-11).

Mitochondrial kinase PINK1

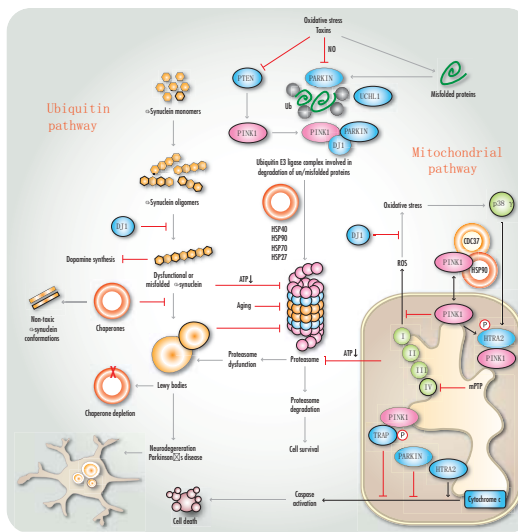


Fig. 2 Role of PINK1 in the pathogenesis of Parkinson's disease. The PINK1 gene (PTEN-induced kinase 1) encodes a serine/threonine protein kinase that localizes to mitochondria. Mutations in PINK1 cause PARK6 familial Parkinson's disease (PD) and provide the most direct link between PD and mitochondrial dysfunction (4, 6, 12, 13).

The mitochondrial pathway is a main pathway to parkinsonism. Impaired oxidative phosphorylation and decreased complex I activity in PD leads to reactive oxygen species formation and oxidative stress. In addition, there is loss of mitochondrial membrane potential. This leads to opening of the mitochondrial permeability transition pore (mPTP), release of cytochrome c in the cytosol, and activation of mitochondrial dependent apoptosis resulting in caspase activation and cell death. Reversive-related genes, such as PINK1, DJ1, Parkin (Parkinson's disease protein) and HTRA2 (Htra serine peptidase 2), might all have neuroprotective effects against the development of mitochondrial dysfunction. Parkin has also been shown to inhibit the release of cytochrome c.

Another main pathway of cell toxicity is the ubiquitin pathway. It involves α-synuclein, misfolded proteins and aggregation. These proteins are ubiquitinated and initially degraded by the ubiquitin-proteasome system, in which Parkin has a crucial role. The proteins PINK1, Parkin, and DJ1 form functional ubiquitin E3 ligase complex to promote degradation of α-synuclein (17). There is accumulation and failure of clearance by the ubiquitin-proteasome system over time, which leads to the formation of α-synuclein aggregates and Lewy bodies. α-Synuclein protofibrils can also be directly toxic, leading to oxidative stress that can further impair the ubiquitin-proteasome system by reducing ATP levels, inhibiting the proteasome, and by oxidation of Parkin. This process accelerates the accumulation of aggregates. Phosphorylation of α-synuclein-containing aggregates might have a role in its pathogenicity and formation.

Dysfunction of both pathways leads to oxidative stress, leading to irreversible cellular damage and death. 1 - Mitochondrial electron transport chain complexes I-IV, NO, nitric oxide; ROS, reactive oxygen species; UCHL1, ubiquitin carboxyl-terminal hydrolase 1; HTRA2, serine peptidase 2; TRAP1, TRAP receptor-associated protein 1; DJ1, Parkinson disease (autosomal recessive, early onset) 1.

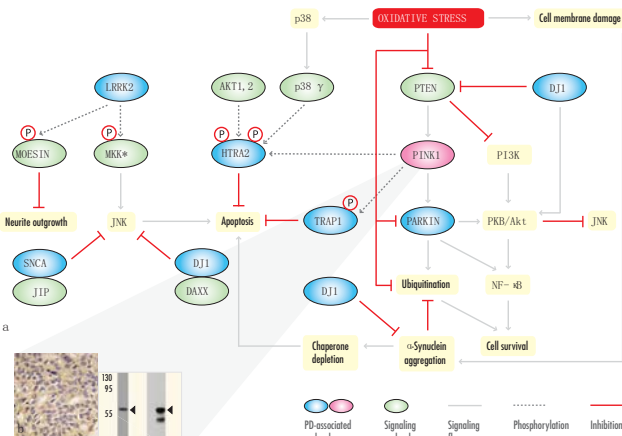


Fig. 3 Protein signaling and neuroprotective mechanisms of PINK1 signaling pathways and biological processes are highlighted in yellow (a). PTEN, phosphatase and tensin homolog; AKT1, v-kit murine thymoma viral oncogene homolog; JNK, mitogen-activated protein kinase 8; MKK6, mitogen-activated protein kinase kinase 3; p38, phosphorylated 3-kinase; p38, p38 mitogen-activated protein kinase; Raf1, raf-1; MEK1, mitogen-activated protein kinase kinase 3; 4-4, 4-7, JIP1, JNK-interacting protein 1; DAXX1, death-domain associated protein; NF-κB, nuclear factor kappa-B; ABGENT's PINK1 monoclonal antibody AM4-40a was applied for immunohistochemistry of hippocampal tissue (b). PINK1 detection in brain tissue (c) and in transfected 293 cells (d). For more PINK1-related products, visit www.abgent.com.

PINK1 in Parkinson's Disease

Gene locus	Chromosome	Gene name	Association	Form of Parkinsonism
PARK1 & PARK4	4q21.3-q22 & 4p15	SNCA (α-Synuclein)	Mutations	Autosomal dominant
PARK2	6q25.2-q27	PARK2 (Parkin)	Mutations	Autosomal recessive early-onset
PARK3	2p13	SPR (Septaplerin reductase)	DNA polymorphism	Autosomal dominant
PARK5	4p14	UCHL1 (Ubiquitin hydrolase)	Mutations	Autosomal dominant
PARK6	13p12	PINK1 (PTEN-induced kinase 1)	Mutations	Autosomal recessive early-onset
PARK7	13p16	DJ1 (PD protein 7)	Mutations	Autosomal recessive early-onset
PARK8	12q12	LRRK2 (Leucine-rich repeat kinase 2)	Mutations	Autosomal dominant
PARK9	13p16	ATP13A2 (ATPase type 13A2)	Mutations	Autosomal recessive
PARK10	1p	HIVEP3 (HIV enhancer binding protein 3)	DNA polymorphism	Autosomal dominant
PARK11	2q37.1	GIGYF2 (GRB10 interacting GYF protein 2)	Mutations	Autosomal dominant
PARK12	3q21-q25	PARK12	DNA polymorphism	X-linked
PARK13	2p13.1	HTRA2 (Serine peptidase 2)	Mutations	Autosomal dominant
PARK14	22q13.1	PLA2G4 (Phospholipase A2)	Mutations	Idiopathic
PARK15	22q11.2-qter	FBXO7 (F-box protein 7)	Mutation	Autosomal recessive

Table 2. Loci and genes associated with Parkinson's disease. In addition to the table, polymorphisms or mutations in NR4A2 (nuclear receptor subfamily 4, group A, member 2), NMFY2 (NADH dehydrogenase [ubiquinone] 2), APOE4 (apolipoprotein E4), FGF20 (growth factor 20), GBA (glucosylase), and MAPT (microtubule-associated protein tau) genes have been associated with susceptibility to PD (OMIM, 4).

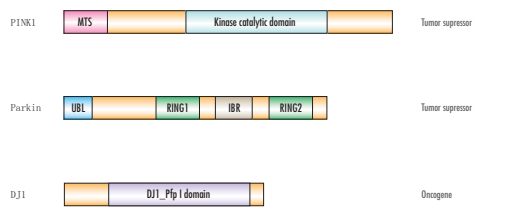


Fig. 4 Domain architecture of PINK1, Parkin and DJ1 proteins. In PD, these autosomal recessive genes are linked to oxidative stress or mitochondrial dysfunction. MTS, mitochondrial targeting sequence; UBL, ubiquitin-like domain; RING, RING finger motif; IBR, in between ring fingers (4).

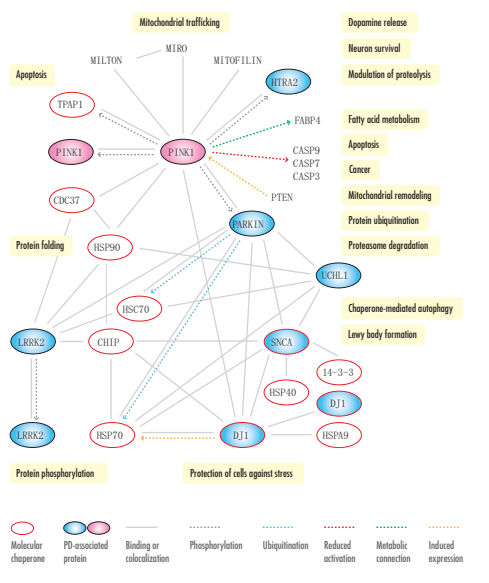


Fig. 5 Schematic representation of molecular interactions between PINK1, its functional partners, chaperones in Parkinson's disease biological processes, related to these protein interactions, are highlighted in yellow. CASP, caspase; Miro, mitochondrial GTPase; PTEN, phosphatase and tensin homolog; Milton, adaptor protein; FAMP4, fatty acid binding protein 4; MitoFILIN, mitochondrial membrane protein; mitochondrial 14-3-3, 14-3-3 protein beta/alpha; HSP40, DnaJ (Hsp40) homolog, subfamily B, member 8; RING2, RING finger motif 2.

Product Abbreviations

- CLCN4: chloride channel 4
- MIB1: mind bomb homolog 1; DAPK, interacting protein 1; ubiquitin ligase mind bomb; ubiquitin ligase protein MIB1
- LRRK2: leucine-rich repeat kinase 2; augmented in rheumatoid arthritis 17; PARK8
- DCLK1: doublecortin-like kinase 1; doublecortin and Cx36 kinase-like 1
- LRP5: low density lipoprotein receptor-related protein 5; endocytic vitroretinopathy 1
- APP: amyloid beta (Aβ) precursor protein; A4 amyloid protein; amyloid beta protein; beta-amyloid peptide
- NSE: enolase 2 (gamma, neuronal); 2-phospho-D-glycerate hydrolyase; neuron-specific enolase
- NTF3: neurotrophin 3
- NTRK3: neurotrophic tyrosine kinase, receptor, type 1; oncogene TRK; tyrosine kinase receptor A
- PSEN2: presenilin 2 (Alzheimer disease 4); Alzheimer's disease 3 like
- CEK1: ceramide kinase; lipid kinase LK4

References

- Mechawar N and Wacker JL (2005) Modulation of neurodegeneration by molecular chaperones. *Nat Rev Neurosci* 6(1), pp.11-22.
- Greggio E and Singleton A (2007) Kinase signaling pathways as potential targets in the treatment of Parkinson's disease. *Expert Opin Ther Targets* 4(4), pp.373-379.
- Fitzgerald KL and Plus-Franco H (2004) Emerging pathways in genetic Parkinson's disease: autosomal recessive genes in Parkinson's disease—common pathways? *TRENDS* 17(572), pp.378-379.
- Moore DJ, West AB, Dawson VL and Dawson TM (2005) Molecular pathophysiology of Parkinson's disease. *Annu Rev Neurosci* 28, pp.37-87.
- Abou-Sleiman PM, Muqit MM and Wood NW (2004) Expanding insights of mitochondrial dysfunction in Parkinson's disease. *Nat Rev Neurosci* 7(3), pp.207-219.
- Mills RD, Sim CH, Mak SS, Mulhern TD, Calverley JG and Cheng HC (2008) Biochemical aspects of the neuroprotective mechanism of PTEN-induced kinase-1 (PINK1). *J Neurochem* 105(1), pp.18-33.
- Xiong H, Wang D, Lin C, Cao YS, Mei H, Tang C, Xia K, Jiang W, Ren Z, Zhong X and Zhang Z (2009) Parkin, PINK1, and DJ-1 form a ubiquitin E3 ligase complex promoting unfolded protein degradation. *J Clin Invest* 119(3), pp.650-660.
- Lu G, Chen S and Lu W (2007) Are heat shock proteins therapeutic target for Parkinson's disease? *Int J Biol Sci* 3(1), pp.20-26.
- McLear JA, Lebrucher D, Messer A and Wolfgang WJ (2008) Combinatorial approach of intrabody with enhanced Hsp70 expression addresses multiple pathologies in a Parkinson's disease mouse model. *FASEB J* 22(6), pp.2003-2011.
- Rousseau R, Kajima R, Haffner G, Bijan P and Bertolotti A (2009) Misfolding of proteins with a polyglutamine expansion is facilitated by proteasomal chaperones. *J Biol Chem* 284(13), pp.1917-1929.
- Adachi H, Katoh M, Mizumoto M, Song C, Popalova G, Angeli C, Kozuka M, Yoshida A, Kobayashi Y, Doya M and Sobue G (2003) Heat shock protein 70 chaperone overexpression ameliorates phenotypes of the spinal and bulbar muscular atrophy transgenic mouse model by reducing nuclear-localized mutant androgen receptor protein. *J Neurosci* 23(4), pp.2203-2211.
- Morikawa Y, Kim YJ, Cho Y, Mitsuhashi K, Endo S and Takahashi R (2008) L347P PINK1 mutant that fails to bind to HSP40/Cdc37 is rapidly degraded in a proteasome-dependent manner. *Neurosci Res* 61(1), pp.43-48.
- Pridgen JW, Olmon JA, Chin LS and Li L (2007) PINK1 Protects against oxidative stress by phosphorylating mitochondrial chaperone TRAP1. *PLoS Biol* 5(7), pp.1-12.