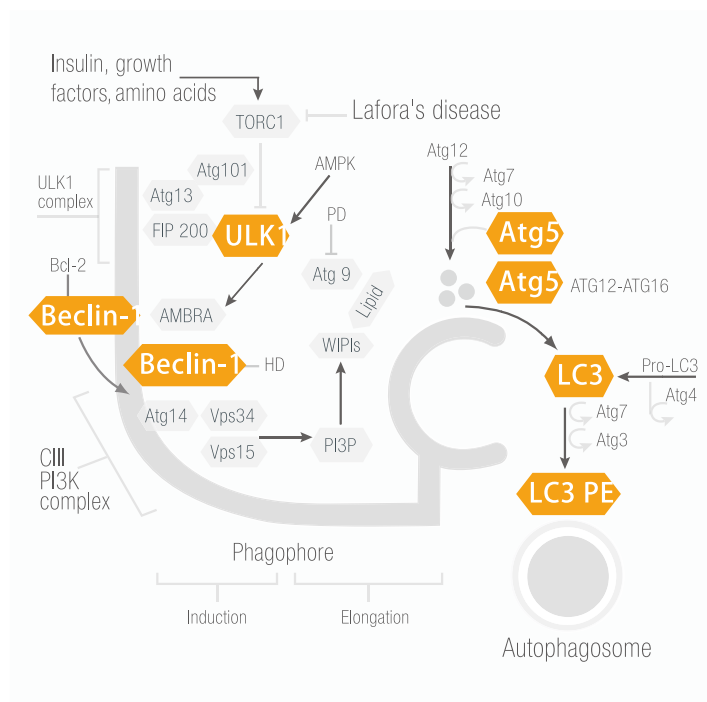
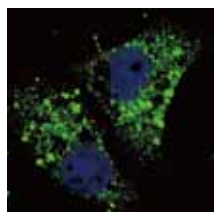


Most Cited Products - Autophagy

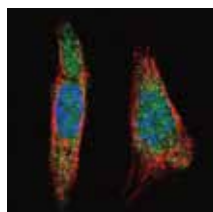


Autophagy (auto-self; phage-eating) is a lysosomal degradative process that allows cells to recycle essential cellular constituents and dispose of damaged organelles and protein aggregates. Autophagy occurs at low basal levels in all cells to maintain homeostatic functions. It is rapidly upregulated when cells need to generate intracellular nutrients and energy during starvation, growth factor withdrawal, or high bioenergetic demands. Autophagy is also important process to dispose of damaging cytoplasmic components during oxidative stress, infection or protein aggregate accumulation. Consequently, impairment in autophagy can lead to development of certain pathological conditions.

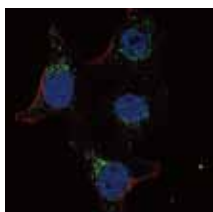
Abgent has one of the most extensive autophagy product lines. Forty-three (43) of these products have been published at least once. This list is a great testimony of quality and coverage of Abgent's autophagy antibody products.



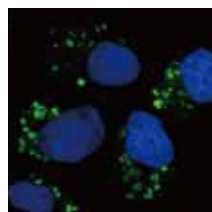
AP1805a



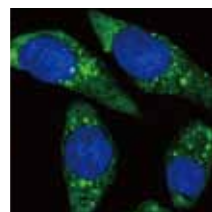
AP1221a



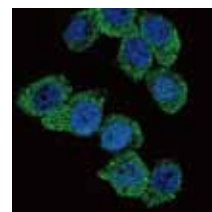
AP7041b



AP1802a



AP1817b

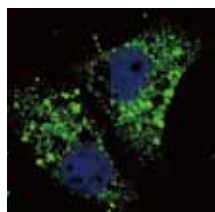


AP7094b

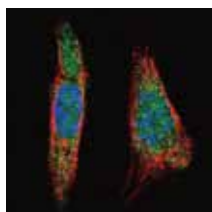
| CATALOG # | TITLE | CITATION COUNT |
|-----------|--------------------------------|----------------|
| AP1802a | LC3 Antibody (APG8B) (N-term) | 39 |
| AP1805a | Cleaved LC3A Antibody | 21 |
| AP1801a | LC3 Antibody (APG8A) (N-term) | 15 |
| AP1812b | ATG5 Antibody (C-term) | 14 |
| AP2054a | SNAIL Antibody (N-term D24) | 14 |
| AP7041b | PDK4 Antibody (C-term) | 14 |
| AP2183b | SQSTM1 (p62) Antibody (C-term) | 13 |
| AP1802b | LC3 Antibody (APG8B) (C-term) | 12 |
| AP1812a | ATG5 Antibody (N-term) | 12 |
| AP7237c | SPHK1 Antibody (Center) | 12 |
| AM1008a | HA Tag Antibody | 12 |
| AM1010a | HIS Tag Antibody | 11 |

| CATALOG # | TITLE | CITATION COUNT |
|-----------|--------------------------------|----------------|
| AP1035a | Dnmt3b Antibody | 10 |
| AM1009a | GFP Tag Antibody | 9 |
| AP1012a | HA Tag Antibody | 9 |
| AP2184a | SYVN1 (HRD1) Antibody (C-term) | 8 |
| AP1034a | Dnmt3a Antibody | 8 |
| AP7039b | PDK2 Antibody (C-term) | 8 |
| AP3046a | Phospho-CDC25A(S177) Antibody | 7 |
| AP6133a | GREMLIN Antibody (C-term) | 7 |
| AP6226a | OAS1 Antibody (C-term) | 7 |
| AP6242a | SIRT3 Antibody (C-term) | 7 |
| AP7219b | DCAMKL1 Antibody (C-term) | 7 |

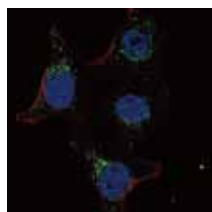
Most Cited Products - Autophagy



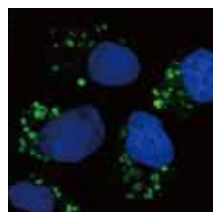
AP1805a



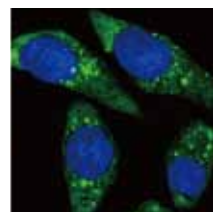
AP1221a



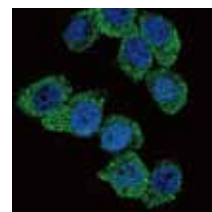
AP7041b



AP1802a



AP1817b



AP7094b

| CATALOG # | TITLE | CITATION COUNT |
|-----------|---|----------------|
| AP8437b | PPM1D Antibody (C-term) | 7 |
| AP1800a | LC3 Antibody (APG8A) | 6 |
| AP1806a | Cleaved LC3B Antibody | 6 |
| AP2014b | CD73 (NT5E) Antibody (C-term) | 6 |
| AP6000b | SARS virus Sm Antibody | 6 |
| AP7094b | PGK1 Antibody (Center) | 6 |
| AM1007a | Myc Tag Antibody | 6 |
| AM1800a | LC3 Antibody (APG8) | 5 |
| AP1813c | ATG7 Antibody | 5 |
| AP1850b | UVRAG Antibody (C-term) | 5 |
| AP2006a | BMPR2 Antibody (N-term) | 5 |
| AP2131c | USP2 Antibody (C-term L523) | 5 |
| AP7219a | DCAMKL1 Antibody (N-term) | 5 |
| AP8067a | KIST (KIS) Antibody (N-term) | 5 |
| AM1021b | Beta-actin Antibody | 4 |
| AM1818a | Beclin 1 Antibody (Ascites) | 4 |
| AP1153a | Interferon-inducible protein (IFITM3) Antibody (N-term) | 4 |
| AP1224a | SUMO2/3 Antibody (C-term) | 4 |
| AP1282a | SUMO2 Antibody (C-term) | 4 |
| AP2418b | FDPS Antibody (Center) | 4 |
| AP2745d | LGR5 Antibody (loop2) | 4 |
| AP3301a | Phospho-LC3C(S12) Antibody | 4 |
| AP3559a | Phospho-RUNX2(S465) Antibody | 4 |
| AP6000a | SARS virus Sn Antibody | 4 |
| AP6140a | EDG4 Antibody (N-term) | 4 |

| CATALOG # | TITLE | CITATION COUNT |
|-----------|---|----------------|
| AP7238a | SPHK2 Antibody (N-term) | 4 |
| AP7534a | DYRK2 Antibody (N-term) | 4 |
| AP7968c | SPAK Antibody (Center) | 4 |
| AP8004a | NIK Antibody (C-term) | 4 |
| AP6315c | DSCR1 Antibody (C-term) | 3 |
| AM8109a | IKK beta Antibody | 3 |
| AP1022b | M JMJ3D3 Antibody (C-term) | 3 |
| AP1221a | SUMO1 Antibody (N-term) | 3 |
| AP1222a | SUMO1 Antibody (C-term) | 3 |
| AP1310a | Bok BH3 Domain Antibody | 3 |
| AP1524a | DKK4 Antibody (N-term) | 3 |
| AP1541b | Connexin 43 Antibody (N-term) | 3 |
| AP1804a | LC3 Antibody (APG8C) (N-term) | 3 |
| AP1809c | ATG4B Antibody (C-term) | 3 |
| AP1816a | ATG12 Antibody (N-term) | 3 |
| AP1817b | ATG16L Antibody | 3 |
| AP1818a | Beclin 1 Antibody | 3 |
| AP1823a | LAMP1 Antibody (N-term) | 3 |
| AP1935a | Cellular Apoptosis Susceptibility Antibody (C-term) | 3 |
| AP2004a | BMPR1A Antibody (N-term) | 3 |
| AP2536b | ACSL4 (FACL4) Antibody (Center) | 3 |
| AP2835b | PCNA Antibody (C-term) | 3 |
| AP2836a | PFDN6 Antibody (N-term) | 3 |
| AP3191a | Phospho-p27Kip1(S10) Antibody | 3 |
| AP6184a | MLL3 Antibody (C-term) | 3 |

About Us As your partner in research and drug discovery, Abgent offers a variety of primary antibodies widely used for the study of biological processes, signaling pathways, and disease. Most of our antibodies are developed, validated, and optimized in-house to ensure product quality, fast and accurate technical support, and availability. Please contact us or visit our website at www.abgent.com.cn to learn more about our antibodies, related products and services.